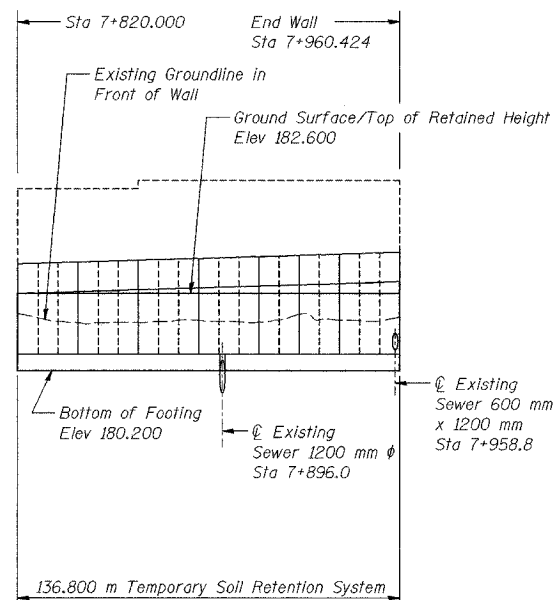


ROUTE NO.	SECTION	COUNTY	SHEET NO.	SHEET TOTAL	SHEET NO. S-2
F.A.S. 06-74	2626.2-R-1	COOK	1207	810	12 SHEETS
BLDG. NO.		FED. AID PROJECT			

CONTRACT NO. 62114 INDOT DES. NO. 0100987



**GENERAL NOTES**

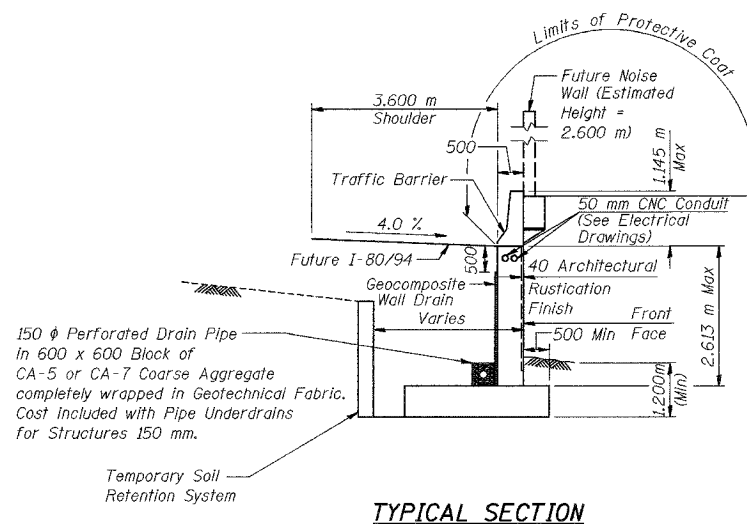
1. Reinforcement bars shall conform to the requirements of AASHTO M 31M or M322M Grade 400.
2. All dimensions are in millimeters (mm) except as noted.
3. All construction joints shall be bonded.

**INDEX OF SHEETS**

SHEET NO.	TITLE
S-1	General Plan
S-2	Index of Sheets, General Notes and Total Bill of Material
S-3	Plan and Elevation (1 of 6)
S-4	Plan and Elevation (2 of 6)
S-5	Plan and Elevation (3 of 6)
S-6	Plan and Elevation (4 of 6)
S-7	Plan and Elevation (5 of 6)
S-8	Plan and Elevation (6 of 6)
S-9	Wall Sections and Details
S-10	Rustication Finish Details
S-11	Boring Logs (1 of 2)
S-12	Boring Logs (2 of 2)

**TEMPORARY SOIL RETENTION SYSTEM - ELEVATION**

A cantilevered sheet piling design does not seem feasible due to underground utility restrictions, and additional members may be necessary. The Contractor shall submit a temporary soil retention system design including plan details and calculations for review and acceptance by the Engineer.



**TOTAL BILL OF MATERIAL**

ITEM	UNIT	QUANTITY
Structure Excavation	m <sup>3</sup>	1,284
Concrete Structures	m <sup>3</sup>	498.6
Rustication Finish	m <sup>2</sup>	246
Protective Coat	m <sup>2</sup>	208
Reinforcement Bars, Epoxy Coated	kg	35,620
Temporary Soil Retention System	m <sup>2</sup>	328
Geocomposite Wall Drain	m <sup>2</sup>	258
Pipe Underdrains for Structures 150 mm	m	145.0
Noise Abatement Wall Anchor Rod Assembly	Each	39

DESIGNED	MJW
CHECKED	KFA
DRAWN	MJB
CHECKED	GSP

ILLINOIS DEPARTMENT OF TRANSPORTATION  
 I-80/94/US 6  
 KINGERY-BORMAN EXPRESSWAY  
 BURNHAM ROAD TO US 41  
**INDEX OF SHEETS, GENERAL NOTES  
 AND TOTAL BILL OF MATERIAL**  
**SECTION 2626.2-R-1**  
**COOK COUNTY**  
**STATION 7+821.737 TO STATION 7+960.424**  
**STRUCTURE NO. 016-W855**  
 DATE 07/05  
**AMERICAN**  
 CONSULTING ENGINEERS

REVISD KFA 10-15-04

FOR INFORMATION ONLY