

BORING NO. AR-077 (1 OF 2)

BORING NO. AR-077 (2 OF 2)

Wang Engineering, INC.
 Consulting Geotechnical and Environmental Engineers
 wangeng@wangeng.com
 100 Fairbank Street
 Addison, IL 60101
 Telephone: 630 458-0700
 Fax: 630 458-0900

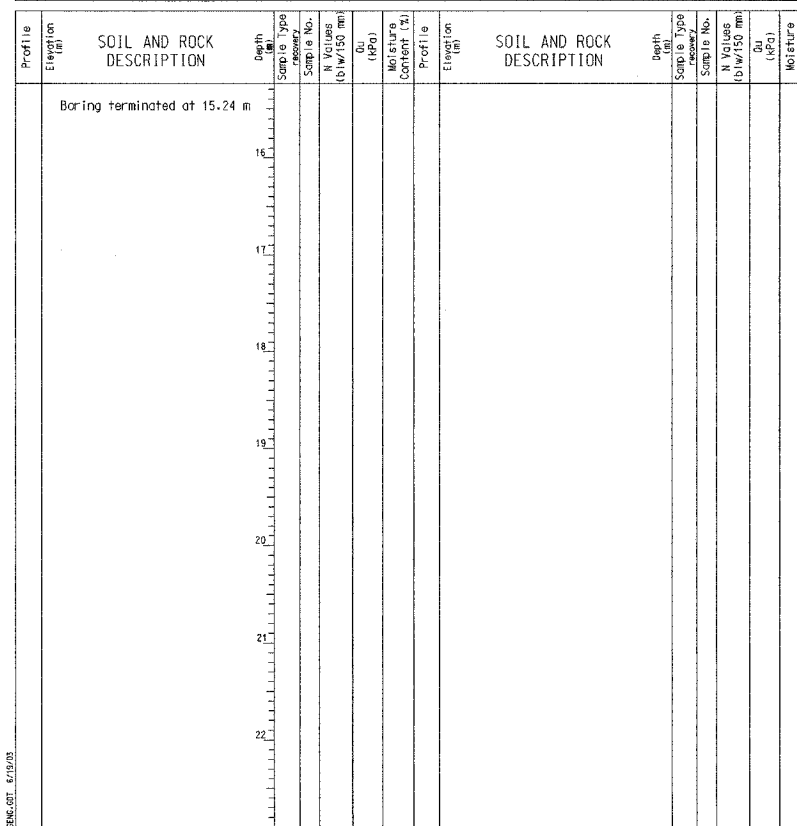
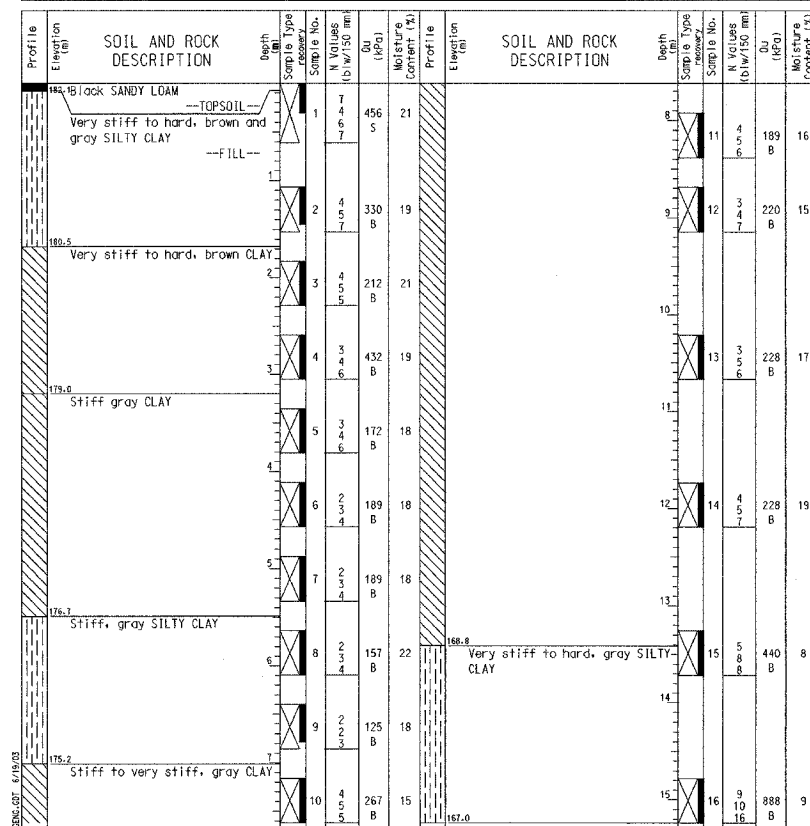
BORING LOG AR-077 Page 1 of 2
 WEI Job No.: 255-08-01
 Client: American Consulting Engineers
 Project: FAI 80/94, I-294 to US 41
 Location: s13 T36N R10W & s29 R15E T36N

Datum: USGS
 Elevation: 182.19 m
 North: 545425.73 m
 East: 367353.62 m
 Station: 7+930.56
 Offset: 24.29 RT

Wang Engineering, INC.
 Consulting Geotechnical and Environmental Engineers
 wangeng@wangeng.com
 100 Fairbank Street
 Addison, IL 60101
 Telephone: 630 458-0700
 Fax: 630 458-0900

BORING LOG AR-077 Page 2 of 2
 WEI Job No.: 255-08-01
 Client: American Consulting Engineers
 Project: FAI 80/94, I-294 to US 41
 Location: s13 T36N R10W & s29 R15E T36N

Datum: USGS
 Elevation: 182.19 m
 North: 545425.73 m
 East: 367353.62 m
 Station: 7+930.56
 Offset: 24.29 RT



GENERAL NOTES

Begin Drilling 10-12-2001 Complete Drilling 10-12-2001
 Drilling Contractor TSC Drill Rig B-61
 Driller GAF Logger B. Fugiel checked by B. Fugiel
 Drilling Method 3.25-in. HSA; Grouted upon completion

WATER LEVEL DATA

While Drilling DRY
 At Completion of Drilling DRY
 Time After Drilling NA
 Depth to Water NA
 The stratification lines represent the approximate boundary between soil types; the actual transition may be gradual.

GENERAL NOTES

Begin Drilling 10-12-2001 Complete Drilling 10-12-2001
 Drilling Contractor TSC Drill Rig B-61
 Driller GAF Logger B. Fugiel checked by B. Fugiel
 Drilling Method 3.25-in. HSA; Grouted upon completion

WATER LEVEL DATA

While Drilling DRY
 At Completion of Drilling DRY
 Time After Drilling NA
 Depth to Water NA
 The stratification lines represent the approximate boundary between soil types; the actual transition may be gradual.

DESIGNED	MJW
CHECKED	KFA
DRAWN	MJB
CHECKED	GSP

ILLINOIS DEPARTMENT OF TRANSPORTATION
 I-80/94/US 6
 KINGERY-BORMAN EXPRESSWAY
 BURNHAM ROAD TO US 41

BORING LOGS (2 OF 2)
 SECTION 2626.2-R-1
 COOK COUNTY

STATION 7+821.737 TO STATION 7+960.424
 STRUCTURE NO. 016-W855

DATE 07/05

AMERICAN
 CONSULTING ENGINEERS

FOR INFORMATION ONLY