

*** TEMPORARY SHEET PILING - ELEVATION**

Estimated Area = 1,633 m²
The cost of Temporary Sheet Piling is included with Excavation, Foundation, Unclassified.

TABLE A

	Minimum Tip Elevation of Sheet Piling	Length (m)
1	177.28	20.400
2	177.98	21.600
3	178.58	21.600
4	178.88	21.600
5	180.59	21.600
6	180.99	21.600
7	181.39	28.800

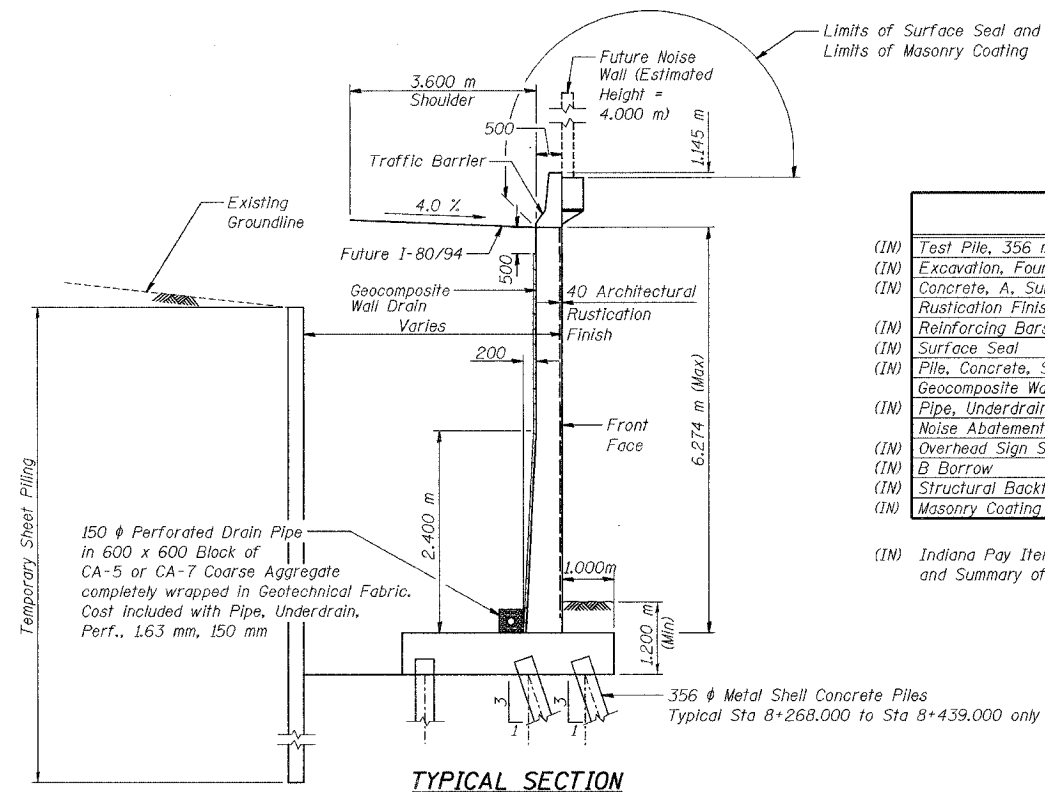
DESIGNED	KFA
CHECKED	BPS
DRAWN	MJB
CHECKED	GSP

GENERAL NOTES

1. Reinforcement bars shall conform to the requirements of AASHTO M 31M or M322M Grade 400.
- * 2. The Contractor shall drive 4 test piles in permanent locations spaced approximately 60 m apart, as directed by the Engineer before ordering the remainder of the piles.
3. All dimensions are in millimeters (mm) except as noted.
- * 4. If the Contractor chooses to alter the temporary cantilevered sheet piling design requirements shown on the plans, a design submittal including plan details and calculations will be required for review and acceptance by the Engineer.
5. All construction joints shall be bonded.
6. Construction for Retaining Wall SNO16-W857 will be let in separate contracts (Phase 2 and Phase 3), with each contract responsible for construction to the limits shown.
7. Masonry Coating should be applied from Sta 8+261.372 to Sta 8+438.554

INDEX OF SHEETS

SHEET NO.	TITLE
S-1	General Plan
S-2	Index of Sheets, General Notes and Total Bill of Material
S-3	Plan and Elevation (1 of 8)
* S-4	Plan and Elevation (2 of 8)
* S-5	Plan and Elevation (3 of 8)
* S-6	Plan and Elevation (4 of 8)
* S-7	Plan and Elevation (5 of 8)
* S-8	Plan and Elevation (6 of 8)
* S-9	Plan and Elevation (7 of 8)
* S-10	Plan and Elevation (8 of 8)
S-11	Wall Sections and Details (1 of 2)
S-12	Wall Sections and Details (2 of 2)
S-13	Rustication Finish Details
S-14	Concrete Pile Details
S-15	Boring Logs (1 of 6)
S-16	Boring Logs (2 of 6)
S-17	Boring Logs (3 of 6)
S-18	Boring Logs (4 of 6)
S-19	Boring Logs (5 of 6)
S-20	Boring Logs (6 of 6)



TOTAL BILL OF MATERIAL

ITEM	UNIT	PHASE 2 QUANTITY	PHASE 3 QUANTITY
(IN) Test Pile, 356 mm	Each	4	-
(IN) Excavation, Foundation, Unclassified	m ³	3,336	377.4
(IN) Concrete, A, Substructure	m ³	1,261.8	123.0
(IN) Rustication Finish	m ²	972	66
(IN) Reinforcing Bars, Epoxy Coated	kg	90,300	5,390
(IN) Surface Seal	L Sum	0.08	0.01
(IN) Pile, Concrete, Steel Shell Encased, 6.35 mm, 356 mm	m	5,776.0	384.0
(IN) Geocomposite Wall Drain	m ²	935	59
(IN) Pipe, Underdrain, Perf., 1.63 mm, 150 mm	m	189.0	16.2
(IN) Noise Abatement Wall Anchor Rod Assembly	Each	52	3
(IN) Overhead Sign Structure-Span Anchor Rod Assembly	Each	-	2
(IN) Borrow	m ³	-	48.6
(IN) Structural Backfill	m ³	-	354.7
(IN) Masonry Coating	L Sum	-	0.04

(IN) Indiana Pay Items, denoted by "(Indiana)" in Special Provisions and Summary of Quantities.

ILLINOIS DEPARTMENT OF TRANSPORTATION
I-80/94/US 6
KINGERY-BORMAN EXPRESSWAY
BURNHAM ROAD TO US 41
**INDEX OF SHEETS, GENERAL NOTES
AND TOTAL BILL OF MATERIAL**
SECTION 2626.2-R-1
LAKE COUNTY, INDIANA
STATION 8+253.769 TO STATION 8+268.572
STRUCTURE NO. 016-W857
DATE 09/05



* FOR INFORMATION ONLY