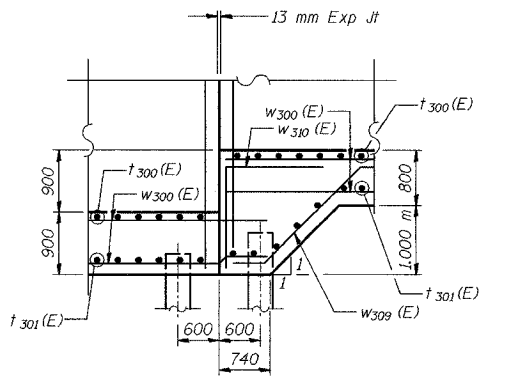
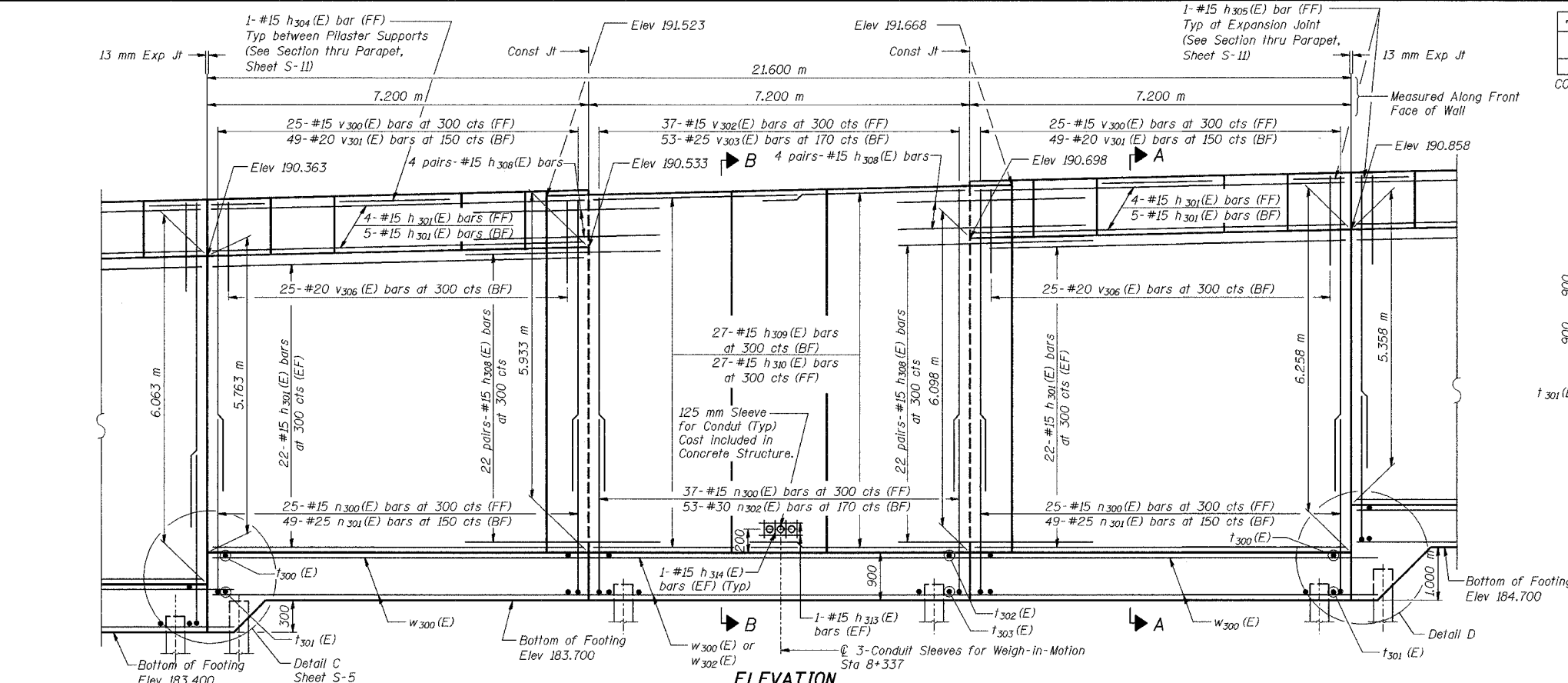


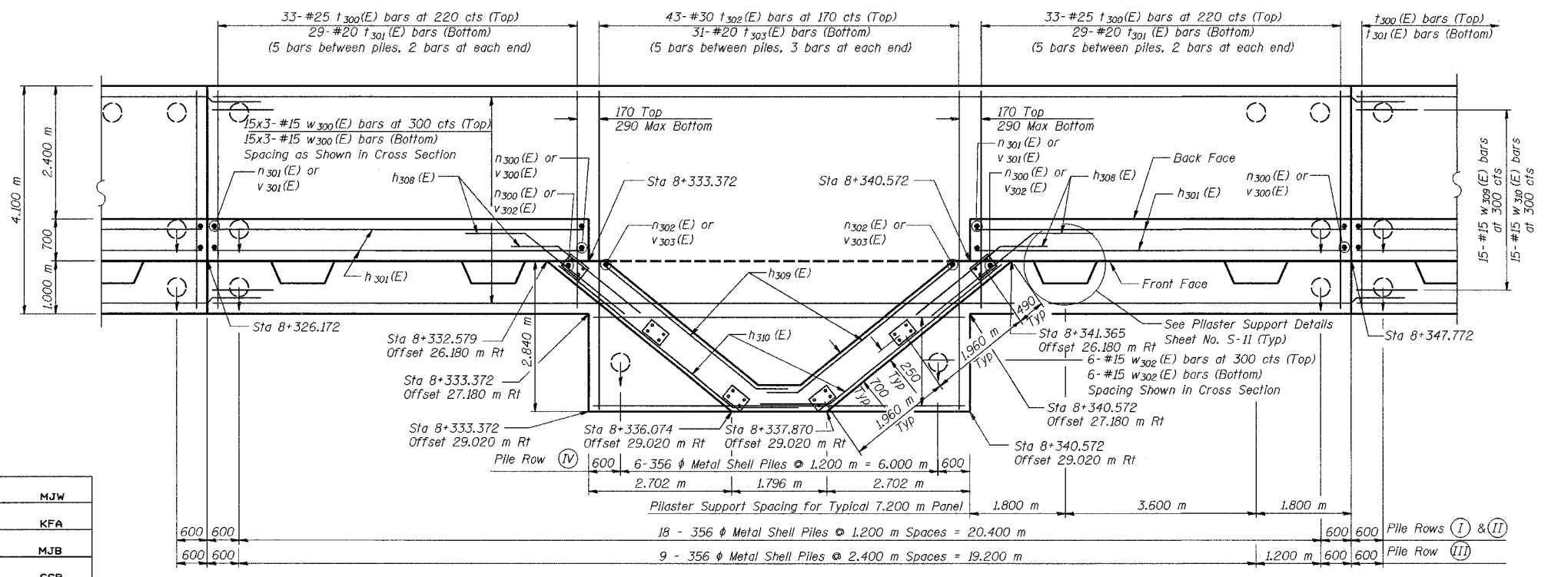
|           |            |                      |      |       |               |
|-----------|------------|----------------------|------|-------|---------------|
| ROUTE NO. | SECTION    | COUNTY               | DATE | SHEET | SHEET NO. S-6 |
| F.A.L.    | 2626.2-R-1 | LAKE COUNTY, INDIANA | 1207 | 846   | 20 SHEETS     |
| REV/DATE  |            |                      |      |       |               |
| DESIGNED  |            |                      |      |       |               |
| CHECKED   |            |                      |      |       |               |

CONTRACT NO. 62114 INDOT DES. NO. 0100987



DETAIL D

**NOTES:**  
 See Sheet S-11 for Section A-A, Section B-B  
 See Sheet S-12 for Expansion Joint Detail and Bill of Material.  
 See Sheet S-13 for Rustication details.  
 Stations are referenced to  $\pm$  I-80/94.  
 Reinforcement bars designated (E) shall be epoxy coated.  
 All dimensions are in millimeters (mm) except as noted.  
 Bars indicated thus 20 x 3-#15 etc. indicates 20 lines of bars with 3 lengths per line.  
 See Electrical Drawings for Conduit Details



**MINIMUM BAR LAPS**  
 #15 bars = 640  
 #20 bars = 790  
 #25 bars = 1320

**LEGEND**  
 BF = Back Face  
 FF = Front Face  
 EF = Each Face

|          |     |
|----------|-----|
| DESIGNED | MJW |
| CHECKED  | KFA |
| DRAWN    | MJB |
| CHECKED  | GSP |

ILLINOIS DEPARTMENT OF TRANSPORTATION  
 I-80/94/US 6  
 KINGERY-BORMAN EXPRESSWAY  
 BURNHAM ROAD TO US 41

**PLAN AND ELEVATION (4 OF 8)  
 SECTION 2626.2-R-1  
 LAKE COUNTY, INDIANA  
 STATION 8+268.572 TO STATION 8+445.954  
 STRUCTURE NO. 016-W857**

DATE 07/05

**AMERICAN**  
 CONSULTING ENGINEERS

FOR INFORMATION ONLY