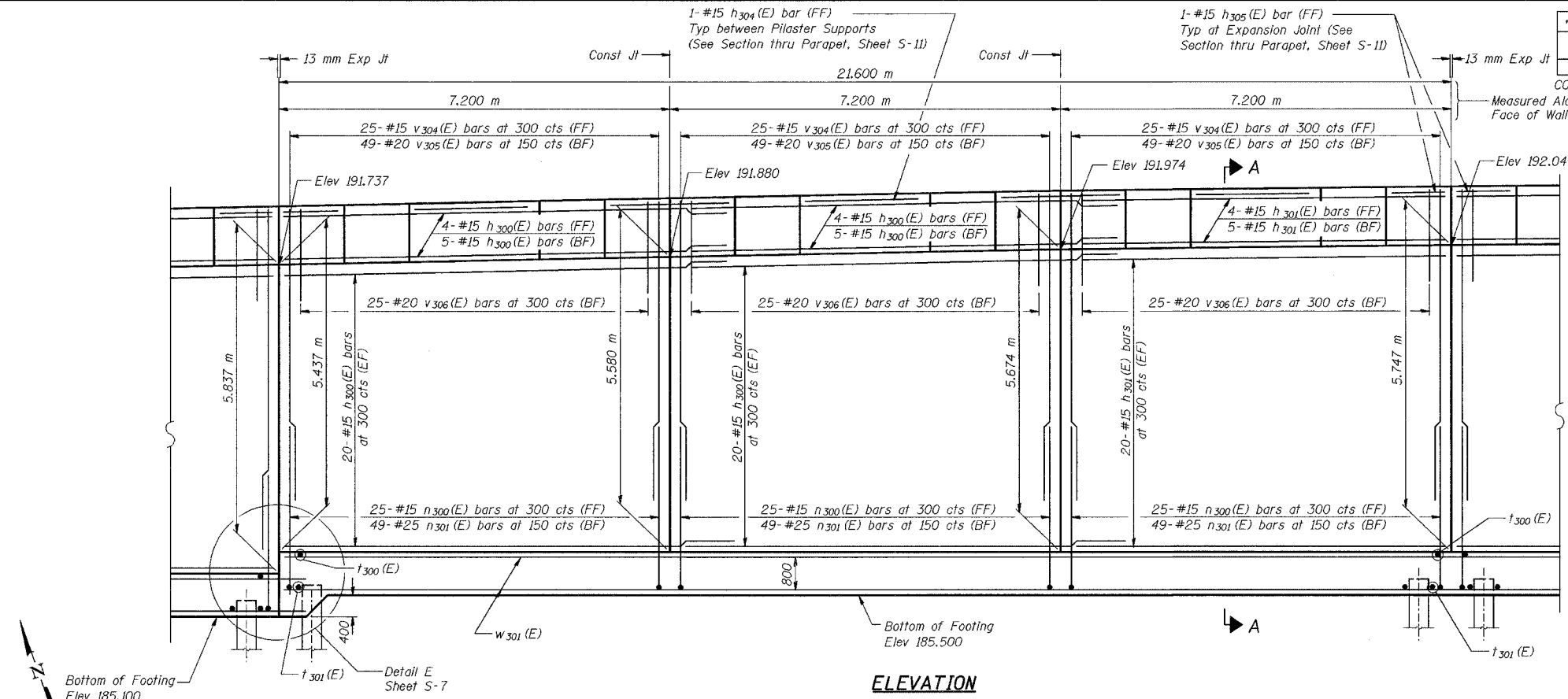
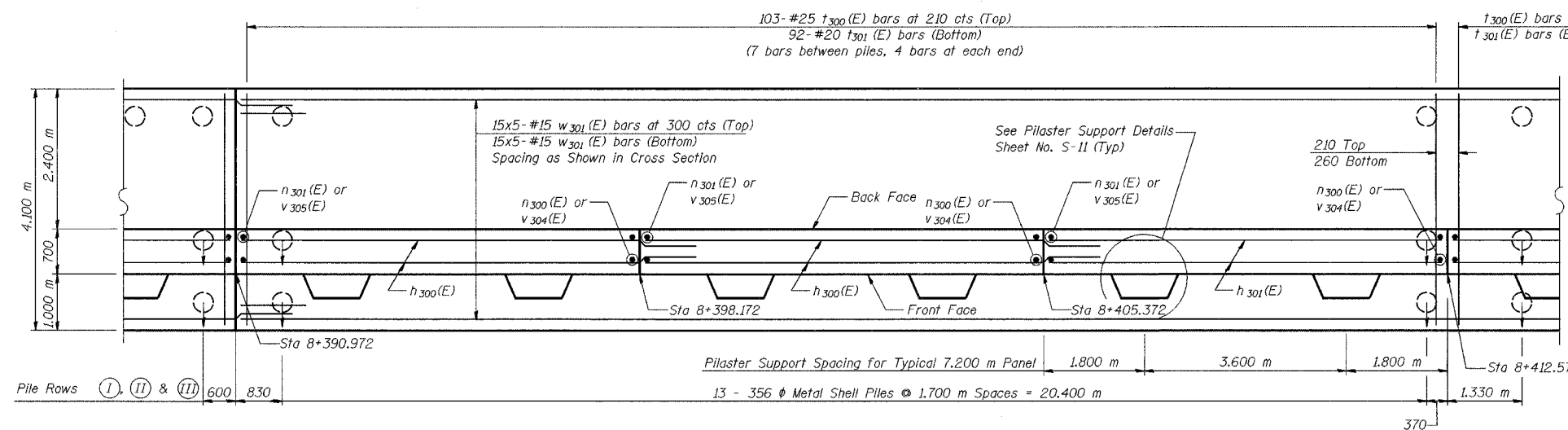


ROUTE NO.	SECTION	COUNTY	SHEET	SHEET NO. S-9
F.A.L. 68/74	PROJ. 266-1	LAKE COUNTY, INDIANA	1207 849	20 SHEETS
ILLINOIS		FED. AID PROJECT		

CONTRACT NO. 62114 INDOT DES. NO. 0100987
Measured Along Front Face of Wall



ELEVATION



FOOTING PLAN

NOTES:
See Sheet S-11 for Section A-A.
See Sheet S-12 for Expansion Joint Detail and Bill of Material.
See Sheet S-13 for Rustication details.
Stations are referenced to @ I-80/94.
Reinforcement bars designated (E) shall be epoxy coated.
All dimensions are in millimeters (mm) except as noted.
Bars indicated thus 20 x 3-#15 etc. indicates 20 lines of bars with 3 lengths per line.

DESIGNED	MJW
CHECKED	KFA
DRAWN	MJB
CHECKED	GSP

MINIMUM BAR LAPS
#15 bars = 640
#20 bars = 790

LEGEND
BF = Back Face
FF = Front Face
EF = Each Face

ILLINOIS DEPARTMENT OF TRANSPORTATION
I-80/94/US 6
KINGERY-BORMAN EXPRESSWAY
BURNHAM ROAD TO US 41

PLAN AND ELEVATION (7 OF 8)
SECTION 2626.2-R-1
LAKE COUNTY, INDIANA
STATION 8+268.572 TO STATION 8+445.954
STRUCTURE NO. 016-W857
DATE 07/05

AMERICAN
CONSULTING ENGINEERS

FOR INFORMATION ONLY