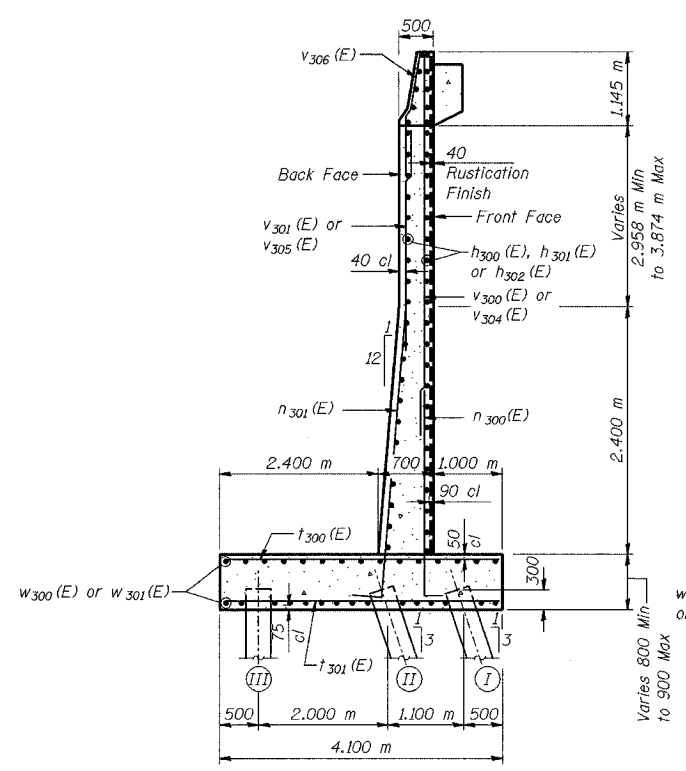
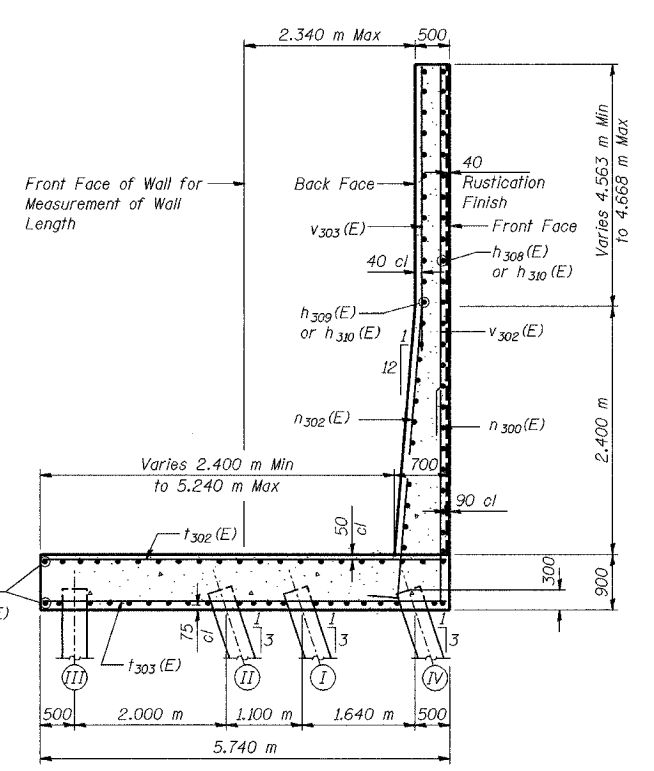


ROUTE NO.	SECTION	COUNTY	SHEET	SHEET NO. S- 11
F.A.L. 86/44	2626.2-R-1	LAKE COUNTY, INDIANA	1207 851	20 SHEETS
SHEET NO. S- 11		CONTRACT NO. 62114 INDOT DES. NO. 0100987		

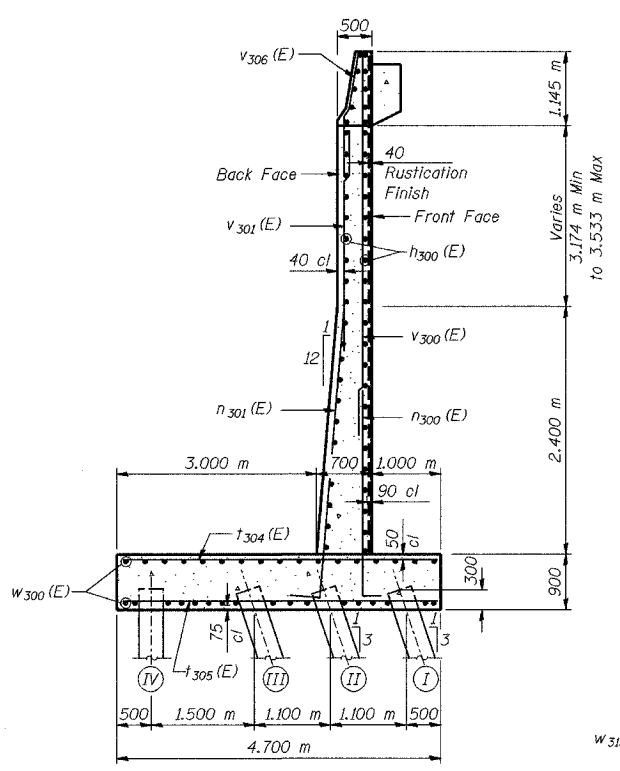
Future Overhead Sign Structure - Span



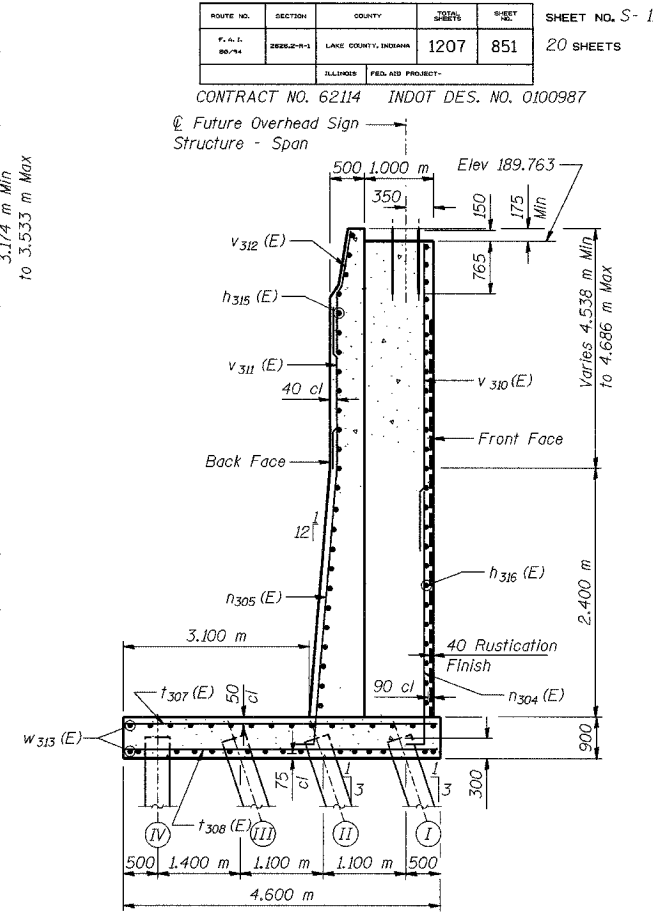
SECTION A-A



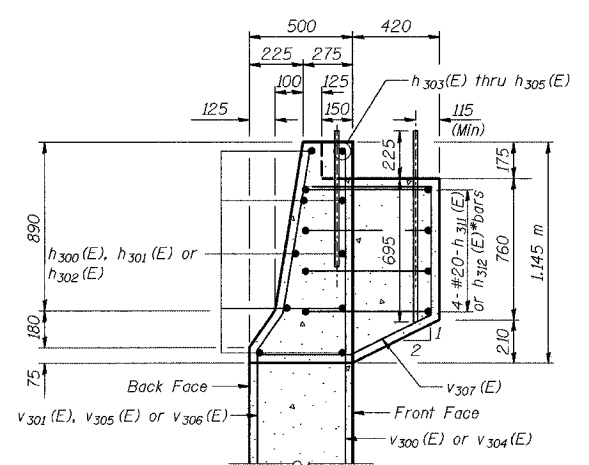
SECTION B-B



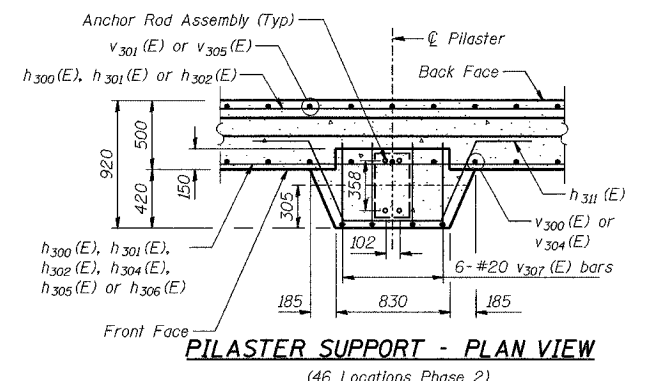
SECTION C-C



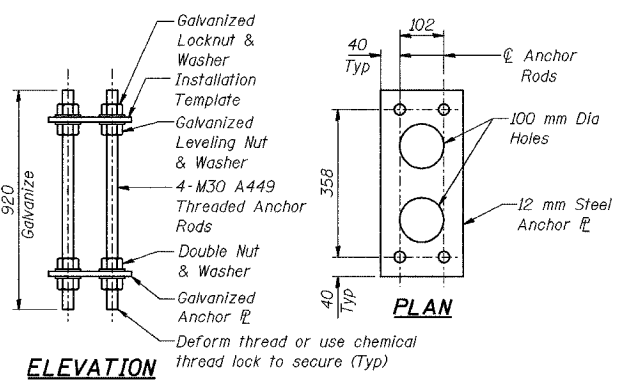
SECTION E-E



SECTION THRU PARAPET

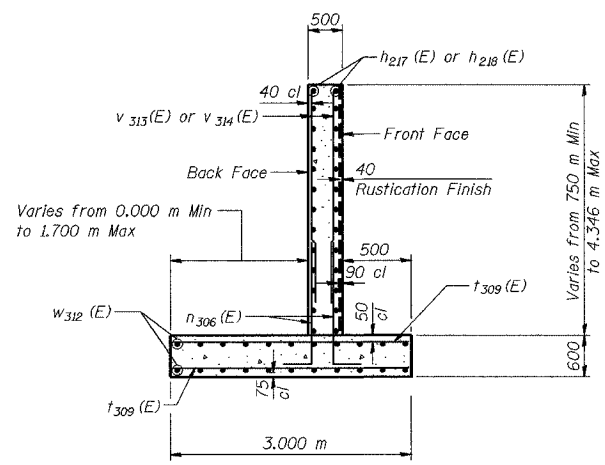


PILASTER SUPPORT - PLAN VIEW  
(46 Locations Phase 2)

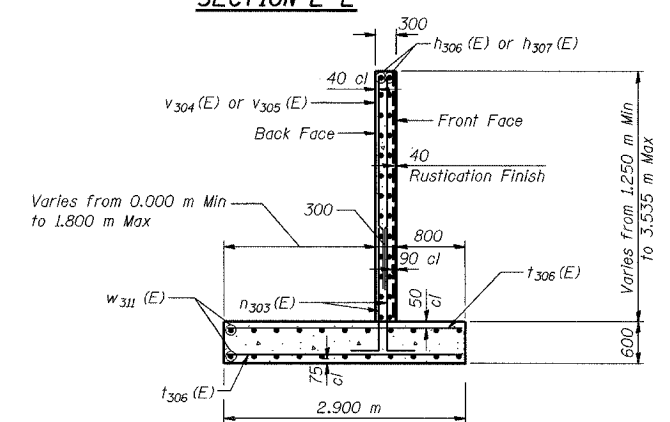


ELEVATION

NOISE ABATEMENT WALL ANCHOR ROD ASSEMBLY  
(52 Req'd Phase 2)  
(3 Req'd Phase 3)



SECTION F-F



SECTION D-D

DESIGNED	KFA
CHECKED	BPS
DRAWN	MJB
CHECKED	GSP

**PILE DATA**  
Type - 356  $\phi$  Metal Shell  
Capacity - 500 kN  
Est. Length - 16.0 m  
No. Req'd - 361 (Phase 2)  
- 24 (Phase 3)  
Test Piles - 4

**NOTES:**  
See Sheet S-12 for Expansion Joint details and Bill of Material  
See Sheet S-13 for Rustication details.  
Reinforcement bars designated (E) shall be epoxy coated.  
All dimensions are in millimeters (mm) except as noted.  
See Typical Section on Sheet S-2 for Drainage Details and Surface Seal Limits.

ILLINOIS DEPARTMENT OF TRANSPORTATION  
I-80/94/US 6  
KINGERY-BORMAN EXPRESSWAY  
BURNHAM ROAD TO US 41

**WALL SECTIONS AND DETAILS (1 OF 2)**  
**SECTION 2626.2-R-1**  
**LAKE COUNTY, INDIANA**  
**STATION 8+253.769 TO STATION 8+268.572**  
**STRUCTURE NO. 016-W857**  
DATE 09/05

**AMERICAN**  
CONSULTING ENGINEERS