

**BORING NO. AR-096 (1 OF 2)**

**BORING NO. AR-096 (2 OF 2)**

**BORING NO. AR-097 (1 OF 2)**

**BORING LOG AR-096** Page 1 of 2  
 Wang Engineering, INC. Consulting Geotechnical and Environmental Engineers  
 wangeng3@wangeng.com  
 100 Fairbank Street  
 Addison, IL 60101  
 Telephone: 630 458-0700  
 Fax: 630 458-0900

WEI Job No.: 255-08-01  
 Client: American Consulting Engineers  
 Project: FAI 80/94, I-294 to US 41  
 Location: s13 T36N R10W & s29 R15E T36N

Datum: NGVD  
 Elevation: 189.32 m  
 North: 545310.62 m  
 East: 367709.93 m  
 Station: 8+306.55  
 Offset: 17.61 RT

**BORING LOG AR-096** Page 2 of 2  
 Wang Engineering, INC. Consulting Geotechnical and Environmental Engineers  
 wangeng3@wangeng.com  
 100 Fairbank Street  
 Addison, IL 60101  
 Telephone: 630 458-0700  
 Fax: 630 458-0900

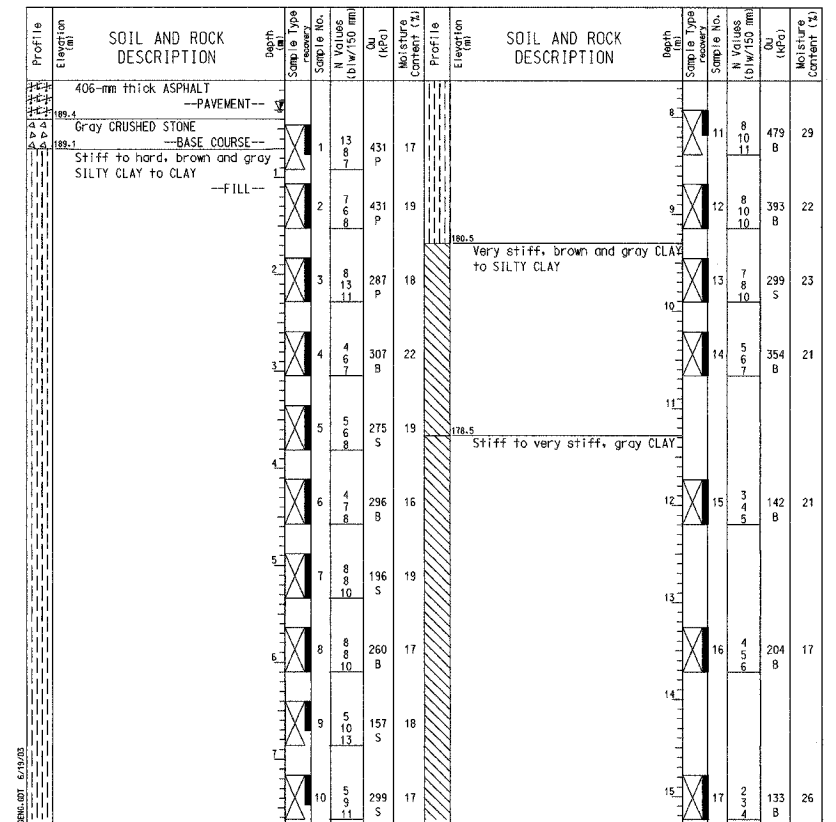
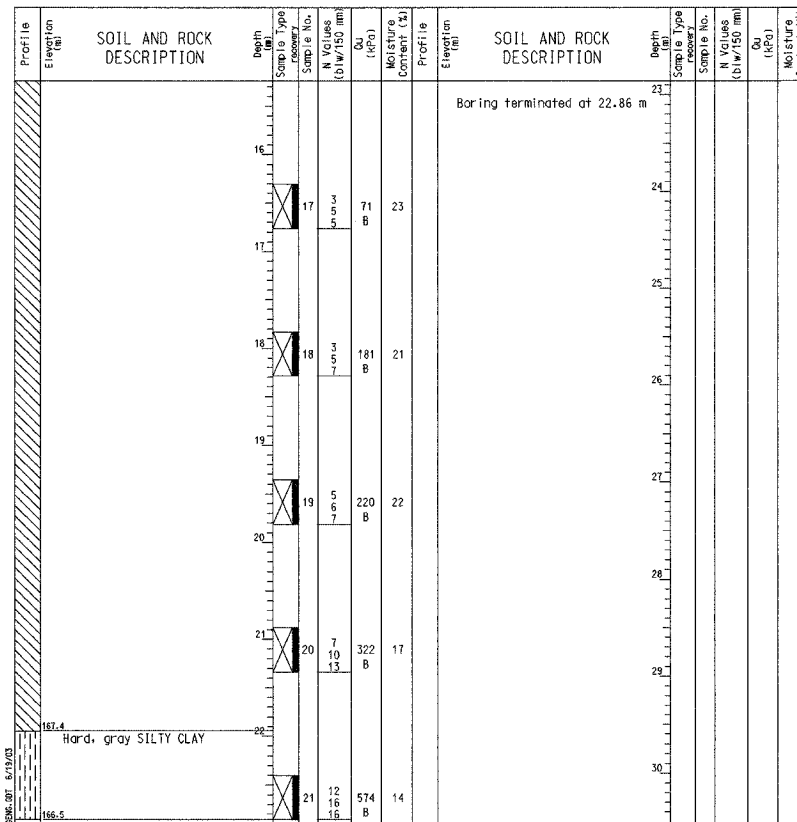
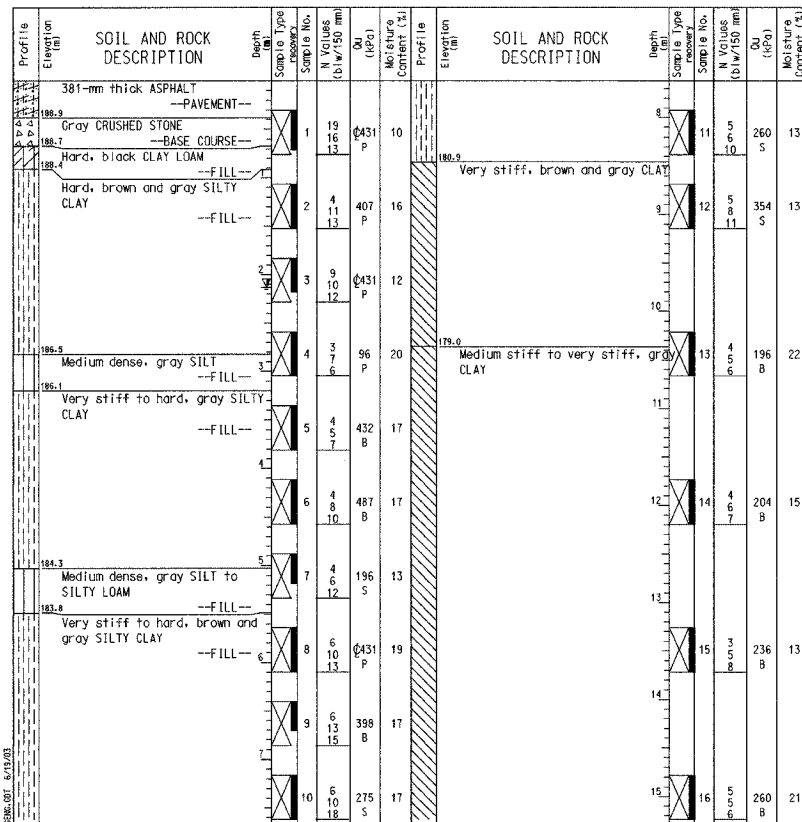
WEI Job No.: 255-08-01  
 Client: American Consulting Engineers  
 Project: FAI 80/94, I-294 to US 41  
 Location: s13 T36N R10W & s29 R15E T36N

Datum: NGVD  
 Elevation: 189.32 m  
 North: 545310.62 m  
 East: 367709.93 m  
 Station: 8+306.55  
 Offset: 17.61 RT

**BORING LOG AR-097** Page 1 of 2  
 Wang Engineering, INC. Consulting Geotechnical and Environmental Engineers  
 wangeng3@wangeng.com  
 100 Fairbank Street  
 Addison, IL 60101  
 Telephone: 630 458-0700  
 Fax: 630 458-0900

WEI Job No.: 255-08-01  
 Client: American Consulting Engineers  
 Project: FAI 80/94, I-294 to US 41  
 Location: s13 T36N R10W & s29 R15E T36N

Datum: NGVD  
 Elevation: 189.75 m  
 North: 545302.39 m  
 East: 367730.65 m  
 Station: 8+328.83  
 Offset: 18.63 RT



**GENERAL NOTES**  
 Begin Drilling 05-06-2002 Complete Drilling 05-06-2002  
 Drilling Contractor TSC Drill Rig CME 75  
 Driller C&A Logger E. Datz Checked by B. Fugiel  
 Drilling Method Mud Rotary; Grouted after final water reading

**WATER LEVEL DATA**  
 While Drilling   
 At Completion of Drilling   
 Time After Drilling 24 hours  
 Depth to Water 2.13 m  
 The stratification lines represent the approximate boundary between soil types; the actual transition may be gradual.

**GENERAL NOTES**  
 Begin Drilling 05-06-2002 Complete Drilling 05-06-2002  
 Drilling Contractor TSC Drill Rig CME 75  
 Driller C&A Logger E. Datz Checked by B. Fugiel  
 Drilling Method Mud Rotary; Grouted after final water reading

**WATER LEVEL DATA**  
 While Drilling   
 At Completion of Drilling   
 Time After Drilling 24 hours  
 Depth to Water 2.13 m  
 The stratification lines represent the approximate boundary between soil types; the actual transition may be gradual.

**GENERAL NOTES**  
 Begin Drilling 05-07-2002 Complete Drilling 05-07-2002  
 Drilling Contractor TSC Drill Rig CME 75  
 Driller C&A Logger E. Datz Checked by B. Fugiel  
 Drilling Method Mud Rotary; Grouted after final water reading

**WATER LEVEL DATA**  
 While Drilling   
 At Completion of Drilling   
 Time After Drilling 24 hours  
 Depth to Water 0.30 m  
 The stratification lines represent the approximate boundary between soil types; the actual transition may be gradual.

DESIGNED	MJW
CHECKED	KFA
DRAWN	MJB
CHECKED	GSP

ILLINOIS DEPARTMENT OF TRANSPORTATION  
 I-80/94/US 6  
 KINGERY-BORMAN EXPRESSWAY  
 BURNHAM ROAD TO US 41

**BORING LOGS (2 OF 6)**  
 SECTION 2626.2-R-1  
 LAKE COUNTY, INDIANA  
 STATION 8+268.572 TO STATION 8+445.954  
 STRUCTURE NO. 016-W857

DATE 07/05

**AMERICAN**  
 CONSULTING ENGINEERS