

ROUTE NO.	SECTION	COUNTY	SHEETS	SHEET NO.	SHEET NO. S-2
P.A. 1	2626.2-R-2	LAKE COUNTY, INDIANA	1207	862	20 SHEETS
ILLINOIS		FED. AID PROJECT			

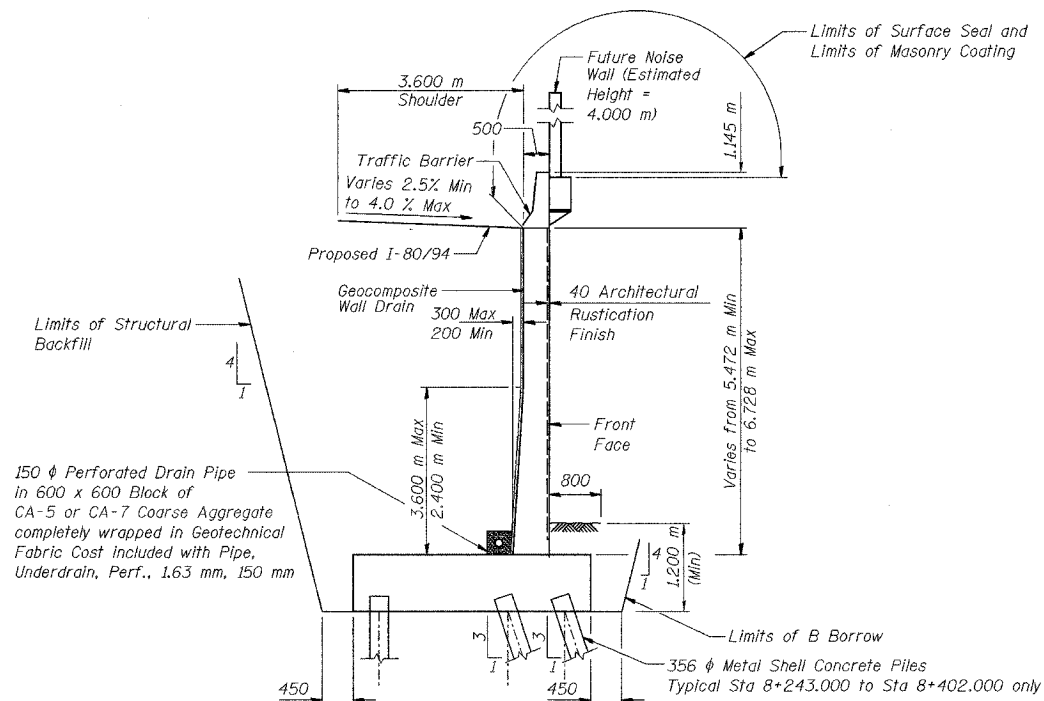
CONTRACT NO. 62114 INDOT DES. NO. 0100987

**GENERAL NOTES**

1. Reinforcement bars shall conform to the requirements of AASHTO M 31M or M322M Grade 400.
2. The Contractor shall drive 4 test piles in permanent locations spaced approximately 60 m apart, as directed by the Engineer before ordering the remainder of the piles.
3. All dimensions are in millimeters (mm) except as noted.
4. All construction joints shall be bonded.

**INDEX OF SHEETS**

SHEET NO.	TITLE
S-1	General Plan
S-2	Index of Sheets, General Notes and Total Bill of Material
S-3	Plan and Elevation (1 of 7)
S-4	Plan and Elevation (2 of 7)
S-5	Plan and Elevation (3 of 7)
S-6	Plan and Elevation (4 of 7)
S-7	Plan and Elevation (5 of 7)
S-8	Plan and Elevation (6 of 7)
S-9	Plan and Elevation (7 of 7)
S-10	Wall Sections and Details (1 of 2)
S-11	Wall Sections and Details (2 of 2)
S-12	Rustication Finish Details
S-13	Concrete Pile Details
S-14	Boring Logs (1 of 7)
S-15	Boring Logs (2 of 7)
S-16	Boring Logs (3 of 7)
S-17	Boring Logs (4 of 7)
S-18	Boring Logs (5 of 7)
S-19	Boring Logs (6 of 7)
S-20	Boring Logs (7 of 7)



**TYPICAL SECTION**

DESIGNED	KFA
CHECKED	BPS
DRAWN	MJB
CHECKED	GSP

**TOTAL BILL OF MATERIAL**

ITEM	UNIT	QUANTITY
(IN) Test Pile, 356 mm	Each	4
(IN) Excavation, Foundation, Unclassified	m <sup>3</sup>	3,995.0
(IN) Concrete, A, Substructure	m <sup>3</sup>	1,385.6
Rustication Finish	m <sup>2</sup>	959
(IN) Reinforcing Bars, Epoxy Coated	kg	89,250
(IN) Surface Seal	L Sum	0.02
(IN) Pile, Concrete, Steel Shell Encased, 6.35 mm, 356 mm	m	5,907.0
Geocomposite Wall Drain	m <sup>2</sup>	921
(IN) Pipe, Underdrain, Perf., 1.63 mm, 150 mm	m	177.4
Noise Abatement Wall Anchor Rod Assembly	Each	50
(IN) Overhead Sign Structure-Span, Anchor Rod Assembly	Each	2
(IN) B Borrow	m <sup>3</sup>	350.9
(IN) Structural Backfill	m <sup>3</sup>	4,114.5
(IN) Masonry Coating	L Sum	0.04

(IN) Indiana Pay Items, denoted by "(Indiana)" in Special Provisions and Summary of Quantities.

ILLINOIS DEPARTMENT OF TRANSPORTATION  
 I-80/94/US 6  
 KINGERY-BORMAN EXPRESSWAY  
 BURNHAM ROAD TO US 41  
**INDEX OF SHEETS, GENERAL NOTES  
 AND TOTAL BILL OF MATERIAL**  
 SECTION 2626.2-R-2  
 LAKE COUNTY, INDIANA  
 STATION 8+235.100 TO STATION 8+412.491  
 STRUCTURE NO. 016-W858

DATE 09/05

