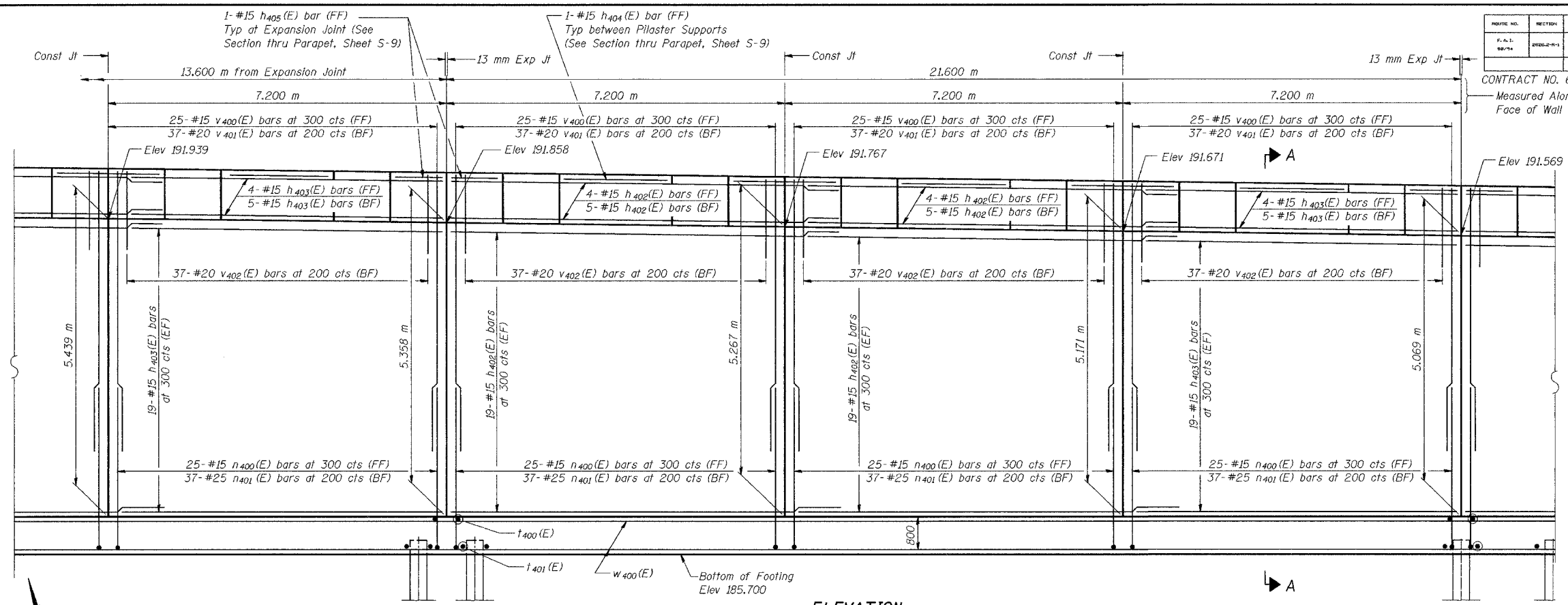
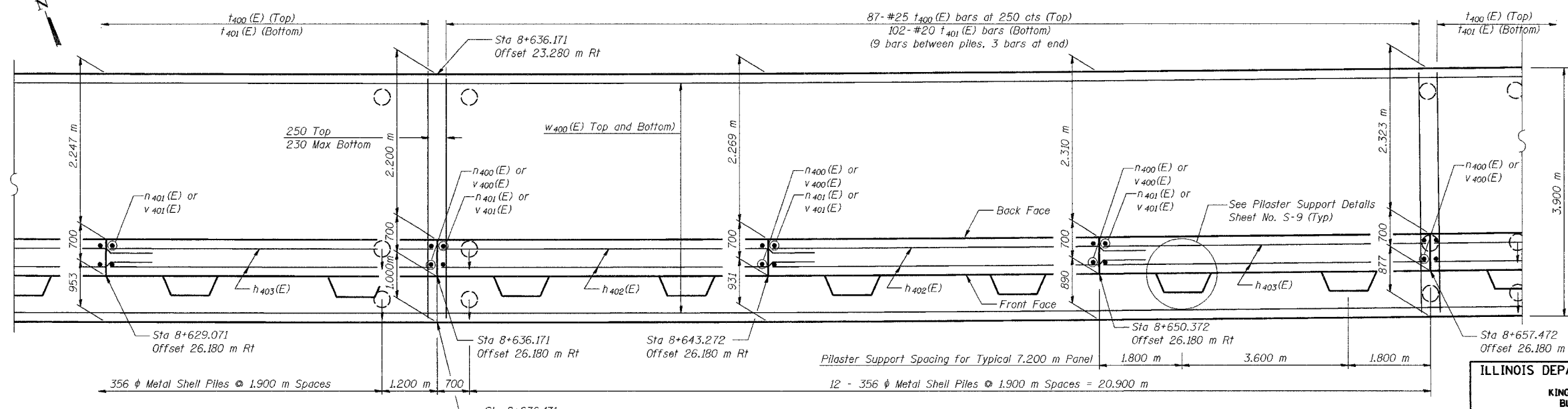


ROUTE NO.	SECTION	COUNTY	TOTAL SHEETS	SHEET NO.	SHEET NO. S-4
1-80/94	2626.2-R-1	LAKE COUNTY, INDIANA	1207	884	17 SHEETS
ILLINOIS		FED. AID PROJECT			

CONTRACT NO. 62114 INDOT DES. NO. 0100987
Measured Along Front Face of Wall



ELEVATION



FOOTING PLAN

DESIGNED	MJW
CHECKED	KFA
DRAWN	MJB
CHECKED	GSP

NOTES:
See Sheet S-9 for Section A-A, Expansion Joint Detail, and Bill of Material.
See Sheet S-10 for Rustication details.
Stations are referenced to \odot I-80/94.
Reinforcement bars designated (E) shall be epoxy coated.
All dimensions are in millimeters (mm) except as noted.

MINIMUM BAR LAPS
#15 bars = 640
#20 bars = 790

LEGEND
BF = Back Face
FF = Front Face
EF = Each Face

ILLINOIS DEPARTMENT OF TRANSPORTATION
I-80/94/US 6
KINGERY-BORMAN EXPRESSWAY
BURNHAM ROAD TO US 41
PLAN AND ELEVATION (2 OF 6)
SECTION 2626.2-R-1
LAKE COUNTY, INDIANA
STATION 8+600.619 TO STATION 8+735.576
STRUCTURE NO. 016-W859
DATE 07/05
AMERICAN
CONSULTING ENGINEERS

FOR INFORMATION ONLY