

**BORING NO. AR-105 (2 OF 2)**

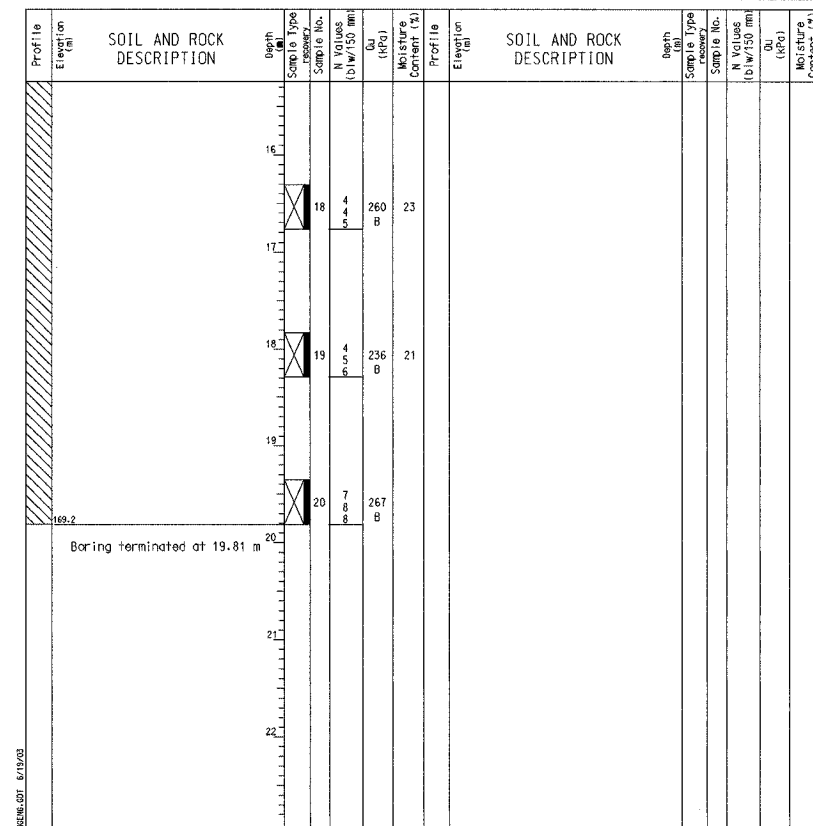
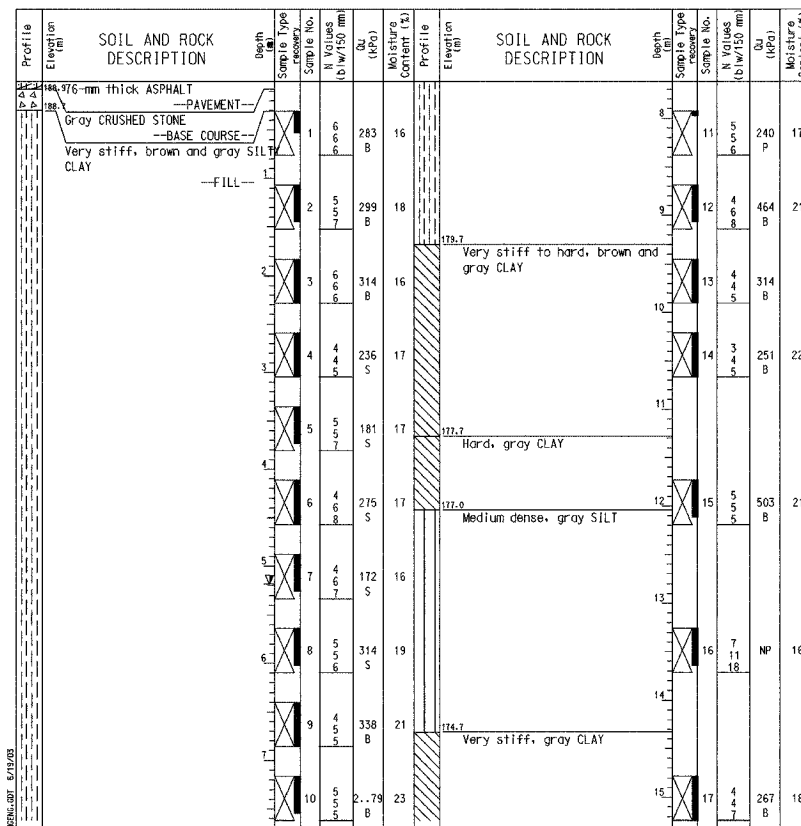
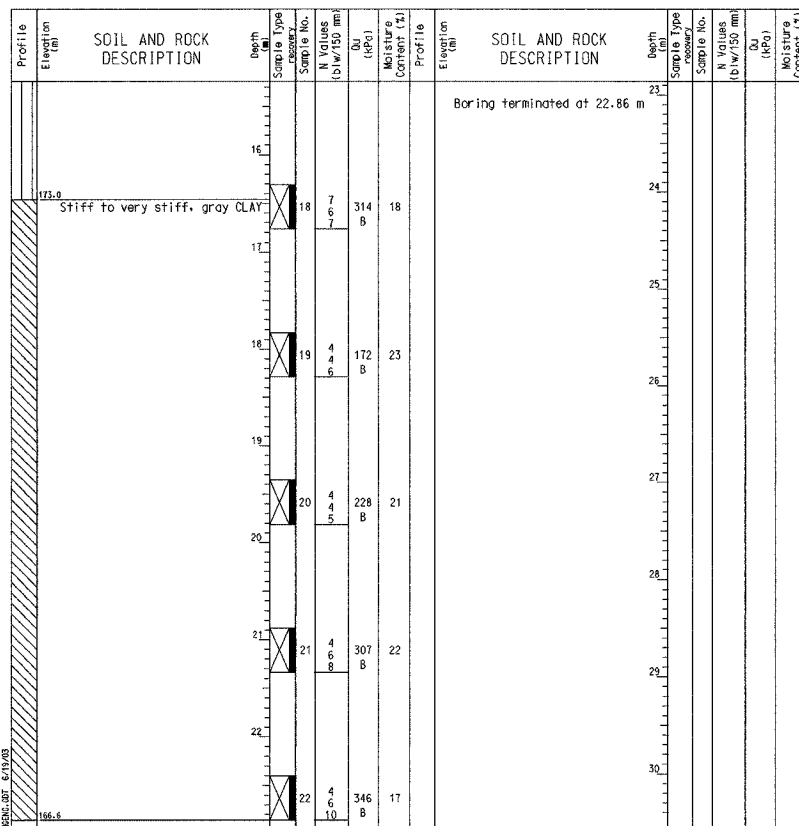
**BORING NO. AR-106 (1 OF 2)**

**BORING NO. AR-106 (2 OF 2)**

**BORING LOG AR-105** Page 2 of 2  
 Wang Engineering, INC. Consulting Geotechnical and Environmental Engineers  
 wangeng3@wangeng.com  
 100 Fairbank Street Addison, IL 60101 Telephone: 630 458-0700 Fax: 630 458-0900  
 Client: American Consulting Engineers  
 Project: I-80/94, I-294 to US 41  
 Location: s13 T36N R10W & s29 R15E T36N  
 Datum: NGVD  
 Elevation: 189.46 m  
 North: 545228.28 m  
 East: 368060.50 m  
 Station: 8+665.17  
 Offset: 20.82 LT

**BORING LOG AR-106** Page 1 of 2  
 Wang Engineering, INC. Consulting Geotechnical and Environmental Engineers  
 wangeng3@wangeng.com  
 100 Fairbank Street Addison, IL 60101 Telephone: 630 458-0700 Fax: 630 458-0900  
 Client: American Consulting Engineers  
 Project: I-80/94, I-294 to US 41  
 Location: s13 T36N R10W & s29 R15E T36N  
 Datum: NGVD  
 Elevation: 189.02 m  
 North: 545222.31 m  
 East: 368080.74 m  
 Station: 8+686.51  
 Offset: 21.15 LT

**BORING LOG AR-106** Page 2 of 2  
 Wang Engineering, INC. Consulting Geotechnical and Environmental Engineers  
 wangeng3@wangeng.com  
 100 Fairbank Street Addison, IL 60101 Telephone: 630 458-0700 Fax: 630 458-0900  
 Client: American Consulting Engineers  
 Project: I-80/94, I-294 to US 41  
 Location: s13 T36N R10W & s29 R15E T36N  
 Datum: NGVD  
 Elevation: 189.02 m  
 North: 545222.31 m  
 East: 368080.74 m  
 Station: 8+686.51  
 Offset: 21.15 LT



**GENERAL NOTES**  
 Begin Drilling 04-11-2002 Complete Drilling 04-11-2002  
 Drilling Contractor TSC Drill Rig CME 75  
 Driller C&J Logger H. Suhail Checked by B. Fugiel  
 Drilling Method Mud Rotary; Grouted after final water reading.  
**WATER LEVEL DATA**  
 While Drilling   
 At Completion of Drilling   
 Time After Drilling 24 hours  
 Depth to Water 4.11 m  
 The stratification lines represent the approximate boundary between soil types; the actual transition may be gradual.

**GENERAL NOTES**  
 Begin Drilling 04-10-2002 Complete Drilling 04-10-2002  
 Drilling Contractor TSC Drill Rig CME 75  
 Driller C&J Logger H. Suhail Checked by B. Fugiel  
 Drilling Method Mud Rotary; Grouted after final water reading.  
**WATER LEVEL DATA**  
 While Drilling   
 At Completion of Drilling   
 Time After Drilling 24 hours  
 Depth to Water 5.18 m  
 The stratification lines represent the approximate boundary between soil types; the actual transition may be gradual.

**GENERAL NOTES**  
 Begin Drilling 04-10-2002 Complete Drilling 04-10-2002  
 Drilling Contractor TSC Drill Rig CME 75  
 Driller C&J Logger H. Suhail Checked by B. Fugiel  
 Drilling Method Mud Rotary; Grouted after final water reading.  
**WATER LEVEL DATA**  
 While Drilling   
 At Completion of Drilling   
 Time After Drilling 24 hours  
 Depth to Water 5.18 m  
 The stratification lines represent the approximate boundary between soil types; the actual transition may be gradual.

DESIGNED	KFA
CHECKED	BPS
DRAWN	CAHJB
CHECKED	GSP

ILLINOIS DEPARTMENT OF TRANSPORTATION  
 I-80/94/US 6  
 KINGERY-BORMAN EXPRESSWAY  
 BURNHAM ROAD TO US 41  
**BORING LOGS (5 OF 6)**  
**SECTION 2626.2-R-2**  
**LAKE COUNTY, INDIANA**  
**STATION 8+581.326 TO STATION 8+733.961**  
**STRUCTURE NO. 016-W860**  
 DATE 09/05  
**AMERICAN CONSULTING ENGINEERS**