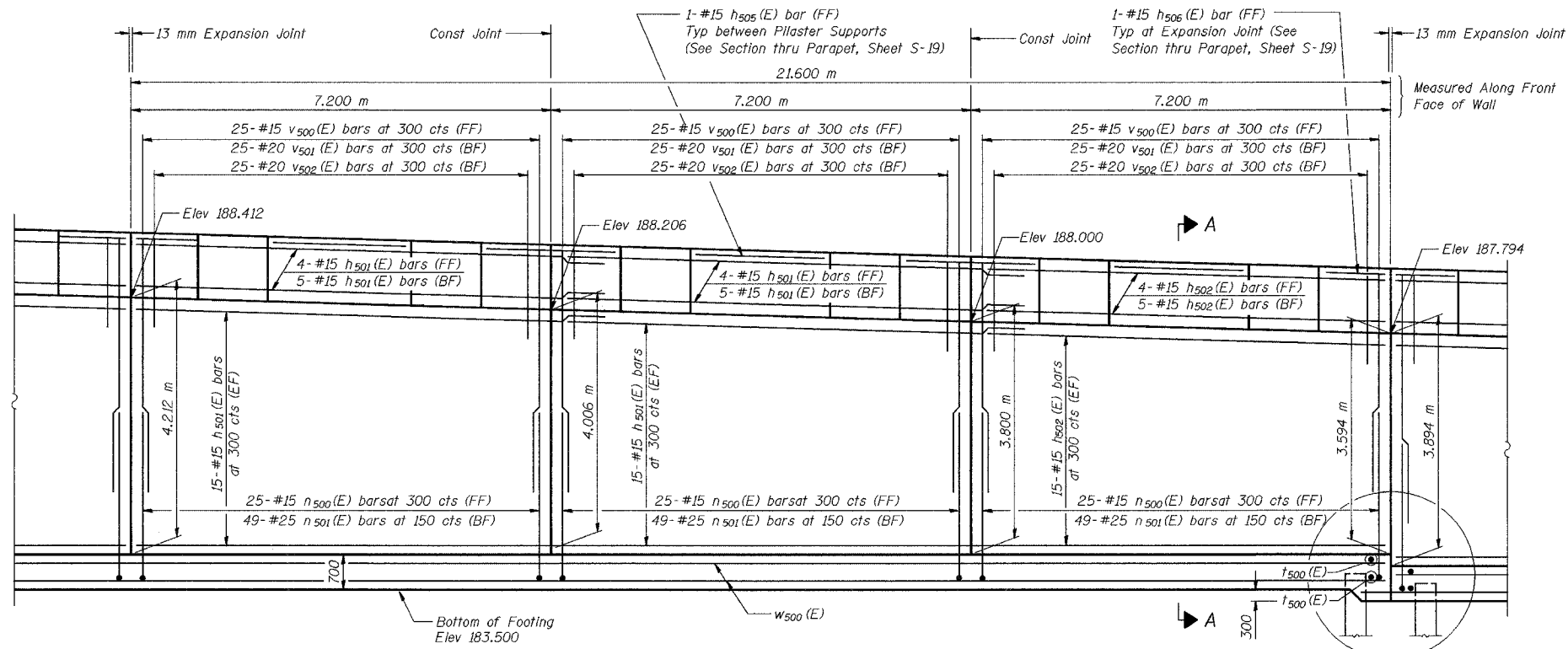
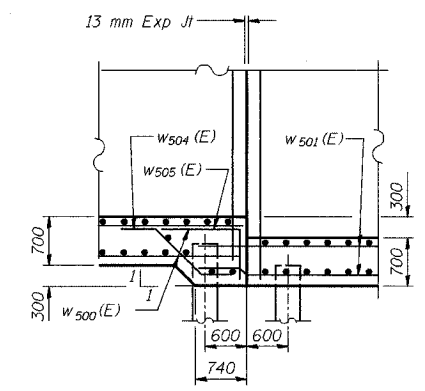


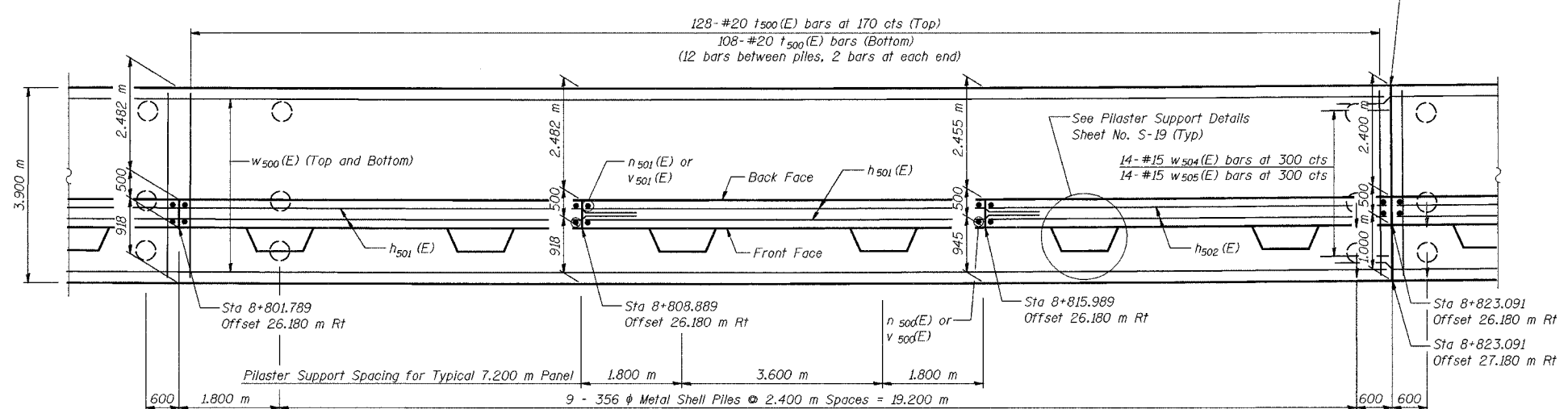
ROUTE NO.	SECTION	COUNTY	SHEETS	SHEET NO.	SHEET NO. S-4 29 SHEETS
F.A.S. NO./A	BRIDGE-R-2	LAKE COUNTY, INDIANA	1207	920	
DRAWN BY		DESIGNED BY		CONTRACT NO. 62114 INDOT DES. NO. 0100987	



**ELEVATION**



**DETAIL A**



**FOOTING PLAN**

**NOTES:**  
 See Sheet S-19 for Section A-A.  
 See Sheet S-20 for Expansion Joint Detail and Bill of Material.  
 See Sheet S-21 for Rustication details.  
 Stations are referenced to  $\odot$  I-80/94.  
 Reinforcement bars designated (E) shall be epoxy coated.  
 All dimensions are in millimeters (mm) except as noted.  
 Bars indicated thus 20 x 3-#15 etc. indicates 20 lines of bars with 3 lengths per line.

DESIGNED	KFA
CHECKED	BPS
DRAWN	MJB
CHECKED	GSP

**MINIMUM BAR LAPS**  
 #15 bars = 640  
 #20 bars = 790

**LEGEND**  
 BF = Back Face  
 FF = Front Face  
 EF = Each Face

ILLINOIS DEPARTMENT OF TRANSPORTATION  
 I-80/94/US 6  
 KINCERY-BORMAN EXPRESSWAY  
 BURHAM ROAD TO US 41

**PLAN AND ELEVATION ( 2 OF 13 )**  
**SECTION 2626.2-R-2**  
 LAKE COUNTY, INDIANA  
 STATION 8+774.073 TO STATION 9+227.203  
 STRUCTURE NO. 016-W861

DATE 09/05

**AMERICAN**  
 CONSULTING ENGINEERS