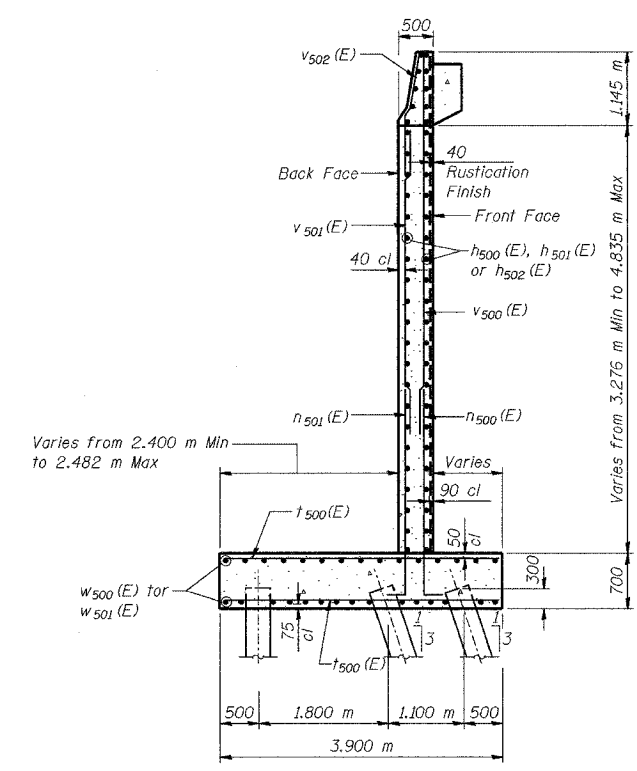


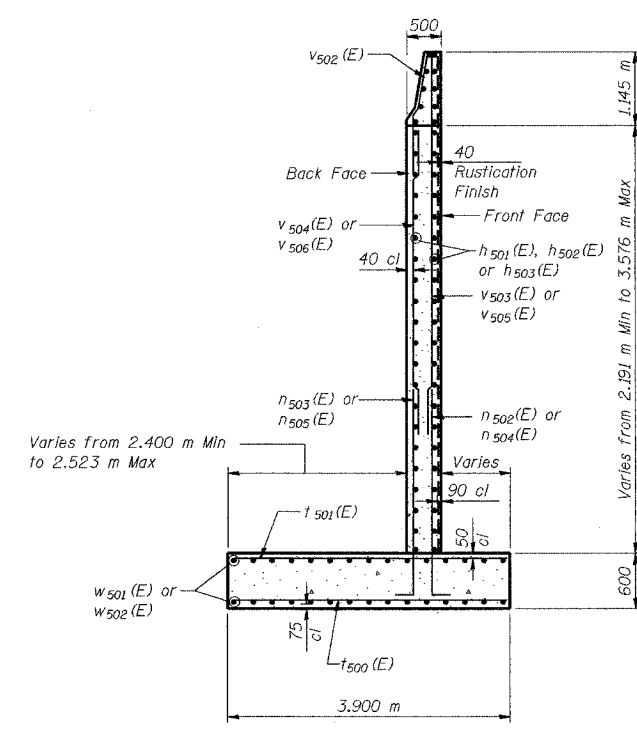
ROUTE NO.	SECTION	COUNTY	SHEET	SHEET NO. S-19
F.A.T.	2626.2-R-2	LAKE COUNTY, INDIANA	1207	935
DATE	09/05			29 SHEETS

CONTRACT NO. 62114 INDOT DES. NO. 0100987

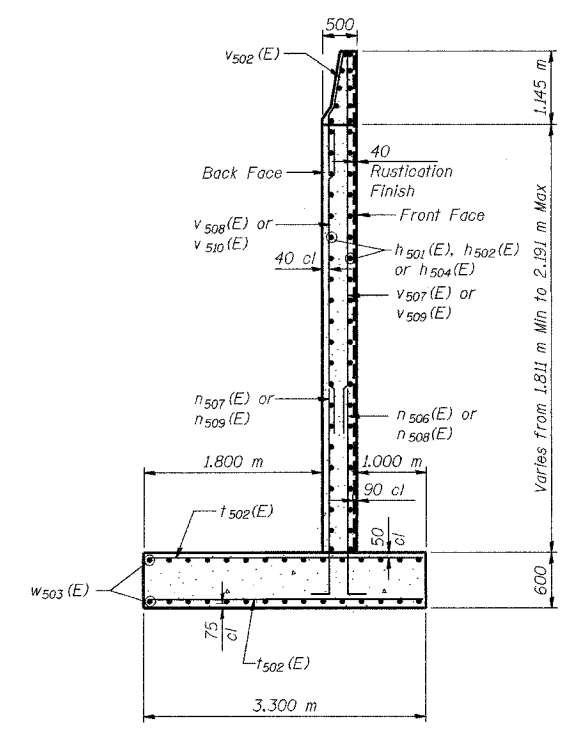
Future Overhead Structure - Span 500.1000 m Elev 185.587



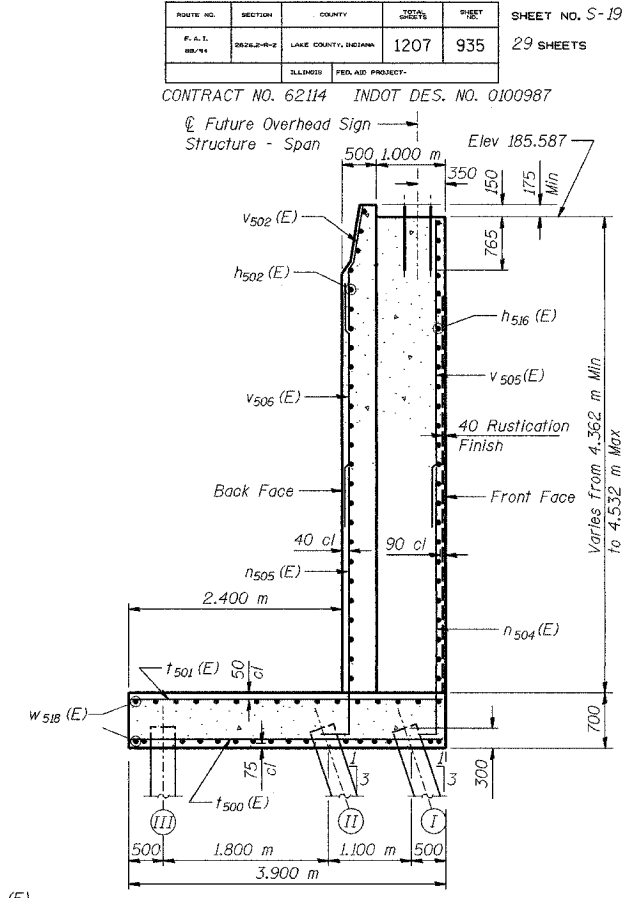
SECTION A-A



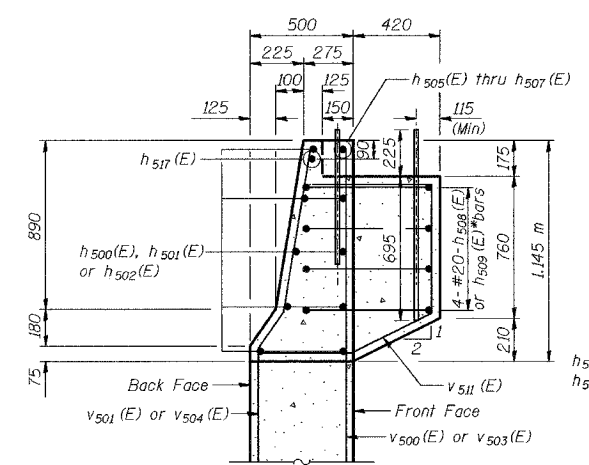
SECTION B-B



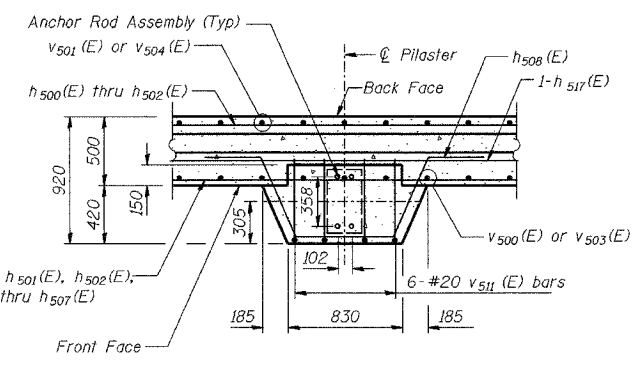
SECTION C-C



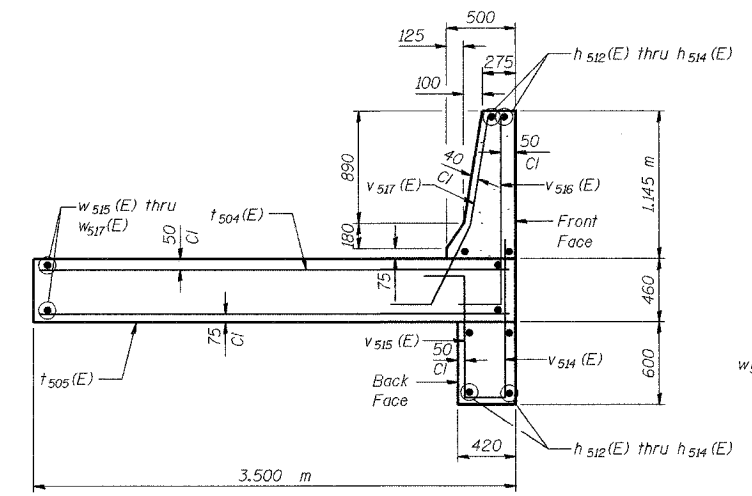
SECTION F-F



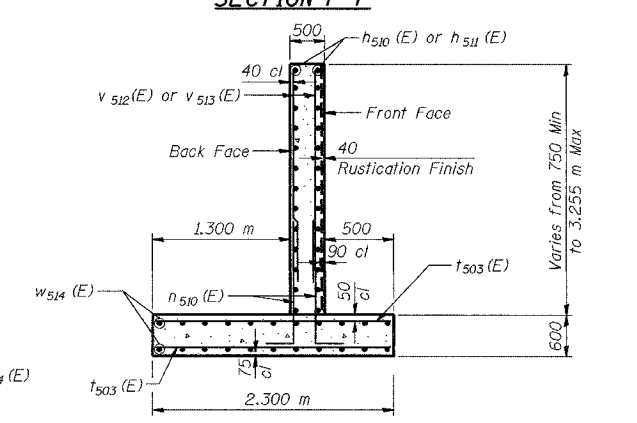
SECTION THRU PARAPET



PILASTER SUPPORT - PLAN VIEW
(43 Locations)



SECTION E-E



SECTION D-D

DESIGNED	KFA
CHECKED	BPS
DRAWN	MJB
CHECKED	GSP

PILE DATA
 Type - 356 φ Metal Shell
 Capacity - 500 kN
 Est. Length - 13.8 m
 No. Req'd. - 100
 Test Piles - 3

NOTES:
 See Sheet S-20 for Anchor Rod Assembly Details, Expansion Joint details and Bill of Material.
 See Sheet S-21 for Rustication details.
 Reinforcement bars designated (E) shall be epoxy coated.
 All dimensions are in millimeters (mm) except as noted.
 See Typical Section on Sheet S-2 for Drainage Details and Surface Seal Limits.

ILLINOIS DEPARTMENT OF TRANSPORTATION
 I-80/94/US 6
 KINGERY-BORMAN EXPRESSWAY
 BURNHAM ROAD TO US 41
WALL SECTIONS AND DETAILS (1 OF 2)
SECTION 2626.2-R-2
LAKE COUNTY, INDIANA
STATION 8+774.073 TO STATION 9+227.203
STRUCTURE NO. 016-W861
 DATE 09/05
AMERICAN
 CONSULTING ENGINEERS