

**BORING NO. AR-011 (1 OF 1)**

**BORING NO. AR-012 (1 OF 2)**

**BORING NO. AR-012 (2 OF 2)**

**BORING LOG AR-011** Page 1 of 1

Wang Engineering, INC. Consulting Geotechnical and Environmental Engineers  
wangeng3@wangeng.com  
100 Fairbank Street  
Addison, IL 60101  
Telephone: 630 458-0700  
Fax: 630 458-0900

WEI Job No.: 255-08-01  
Client: American Consulting Engineers  
Project: FAI 80/94, I-294 to US 41  
Location: s13 I36N R10W & s29 R15E T36N

Datum: USGS  
Elevation: 181.97 m  
North: 545539.33 m  
East: 366547.04 m  
Station: 7 +110.99  
Offset: 21.32 LT

**BORING LOG AR-012** Page 1 of 2

Wang Engineering, INC. Consulting Geotechnical and Environmental Engineers  
wangeng3@wangeng.com  
100 Fairbank Street  
Addison, IL 60101  
Telephone: 630 458-0700  
Fax: 630 458-0900

WEI Job No.: 255-08-01  
Client: American Consulting Engineers  
Project: FAI 80/94, I-294 to US 41  
Location: s13 I36N R10W & s29 R15E T36N

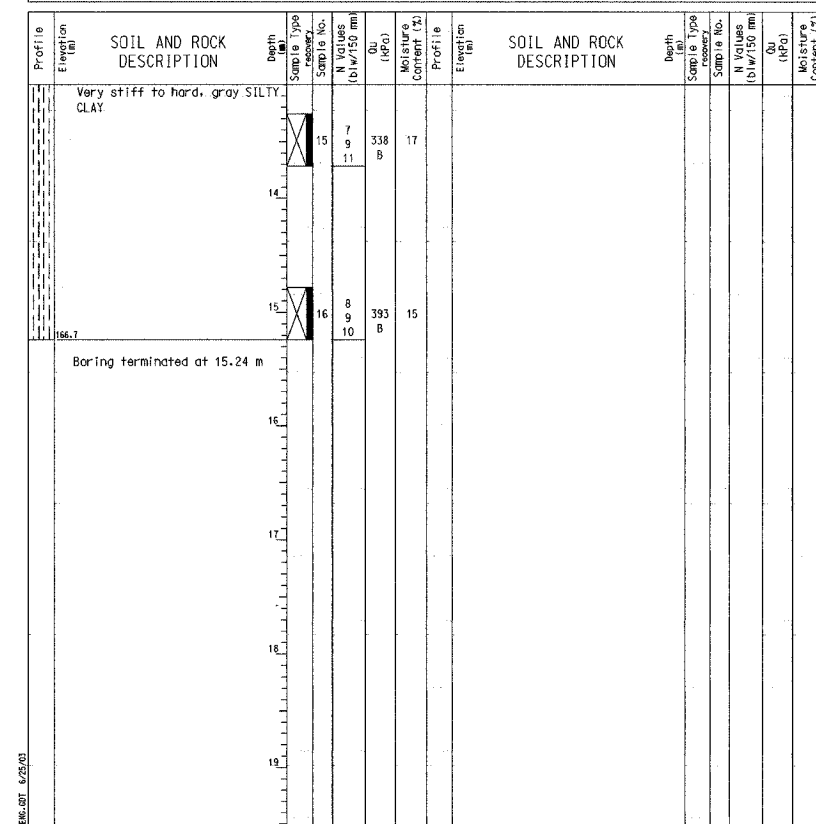
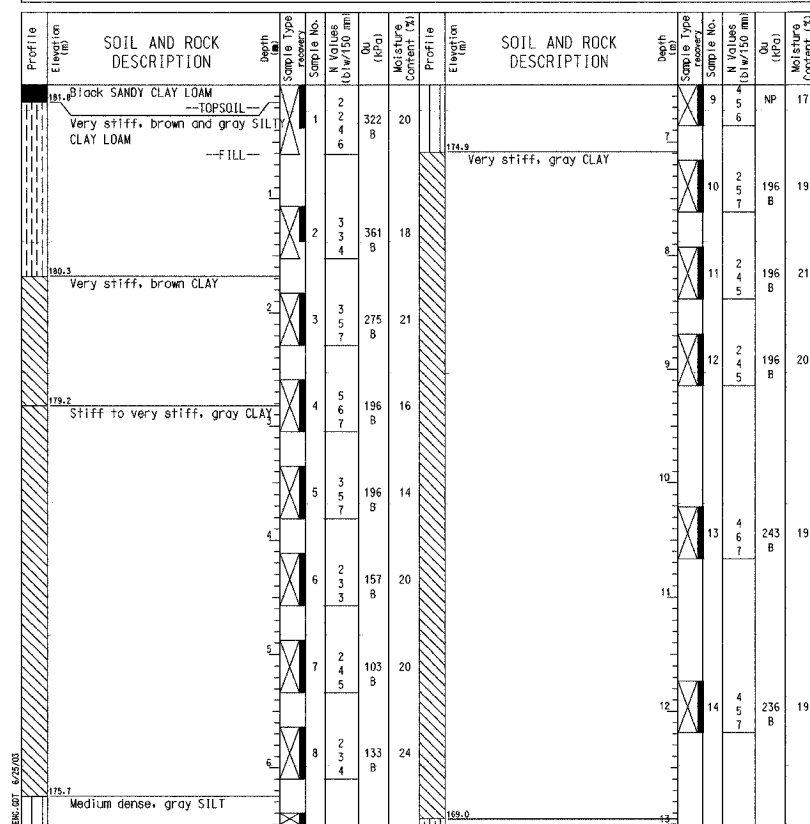
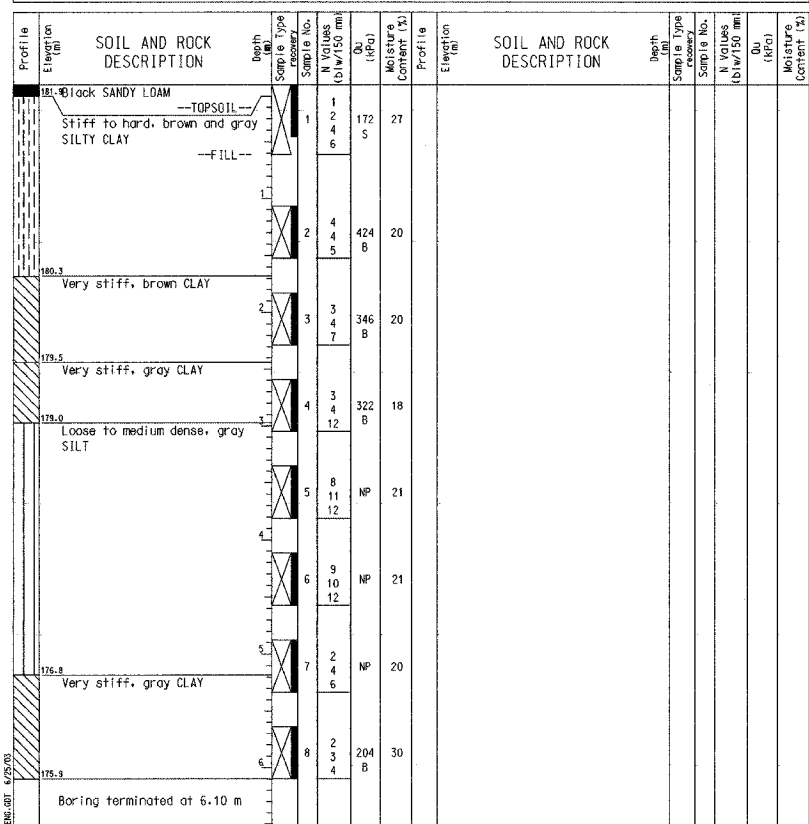
Datum: USGS  
Elevation: 181.99 m  
North: 545539.78 m  
East: 366570.51 m  
Station: 7 +134.53  
Offset: 21.50 LT

**BORING LOG AR-012** Page 2 of 2

Wang Engineering, INC. Consulting Geotechnical and Environmental Engineers  
wangeng3@wangeng.com  
100 Fairbank Street  
Addison, IL 60101  
Telephone: 630 458-0700  
Fax: 630 458-0900

WEI Job No.: 255-08-01  
Client: American Consulting Engineers  
Project: FAI 80/94, I-294 to US 41  
Location: s13 I36N R10W & s29 R15E T36N

Datum: USGS  
Elevation: 181.99 m  
North: 545539.78 m  
East: 366570.51 m  
Station: 7 +134.53  
Offset: 21.50 LT



**GENERAL NOTES**

Begin Drilling 10-01-2001 Complete Drilling 10-01-2001  
Drilling Contractor TSC Drill Rig B-61  
Driller GAF Logger B. Fugiel Checked by B. Fugiel  
Drilling Method 2.25-in. SSA; Backfilled

**WATER LEVEL DATA**

White Drilling  DRY  
At Completion of Drilling  DRY  
Time After Drilling NA  
Depth to Water  NA  
The stratification lines represent the approximate boundary between soil types; the actual transition may be gradual.

**GENERAL NOTES**

Begin Drilling 10-15-2001 Complete Drilling 10-15-2001  
Drilling Contractor TSC Drill Rig B-61  
Driller GAF Logger B. Fugiel Checked by B. Fugiel  
Drilling Method 3.25-in. HSA; Grouted

**WATER LEVEL DATA**

White Drilling  DRY  
At Completion of Drilling  DRY  
Time After Drilling NA  
Depth to Water  NA  
The stratification lines represent the approximate boundary between soil types; the actual transition may be gradual.

**GENERAL NOTES**

Begin Drilling 10-15-2001 Complete Drilling 10-15-2001  
Drilling Contractor TSC Drill Rig B-61  
Driller GAF Logger B. Fugiel Checked by B. Fugiel  
Drilling Method 3.25-in. HSA; Grouted

**WATER LEVEL DATA**

White Drilling  DRY  
At Completion of Drilling  DRY  
Time After Drilling NA  
Depth to Water  NA  
The stratification lines represent the approximate boundary between soil types; the actual transition may be gradual.

DESIGNED	BHS
CHECKED	KFA
DRAWN	MJB
CHECKED	GSP

ILLINOIS DEPARTMENT OF TRANSPORTATION  
F.A.L. ROUTE 80/94 AND U.S. ROUTE 6  
LOCAL ROAD RECONSTRUCTION

**BORING LOGS (7 OF 11)**  
SECTION 2001-167R  
COOK COUNTY  
STATION 6 + 850.000 to STATION 7 + 379.000  
STRUCTURE NO. 016-W874  
DATE 07/05

**AMERICAN**  
CONSULTING ENGINEERS

FOR INFORMATION ONLY