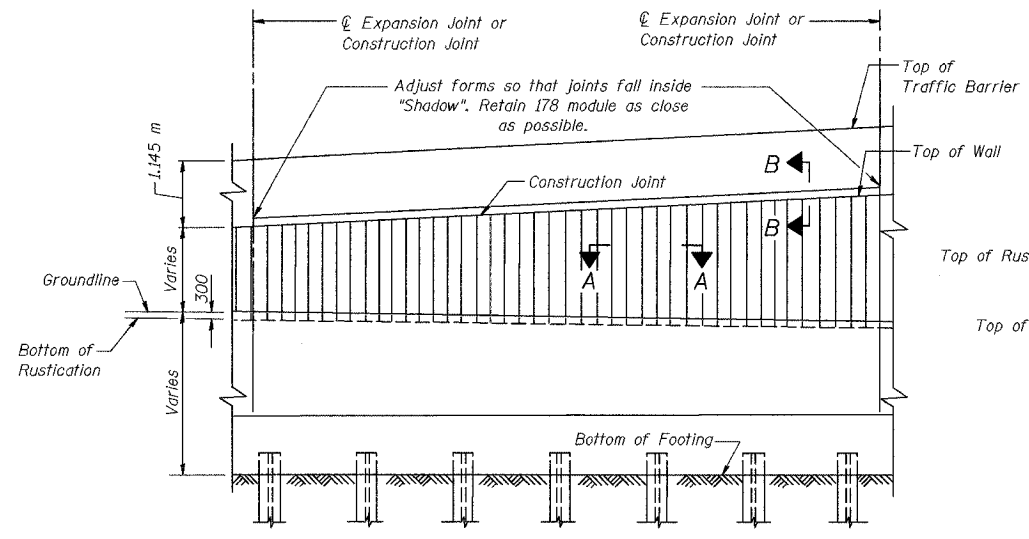


| | | | | | |
|-----------|------------|----------------------|-------|-------|----------------|
| ROUTE NO. | SECTION | COUNTY | SHEET | SHEET | SHEET NO. S-18 |
| P.A. 1 | 2626.2-R-2 | LAKE COUNTY, INDIANA | 1207 | 1035 | 25 SHEETS |
| SILNERS | | FED. AID PROJECT | | | |

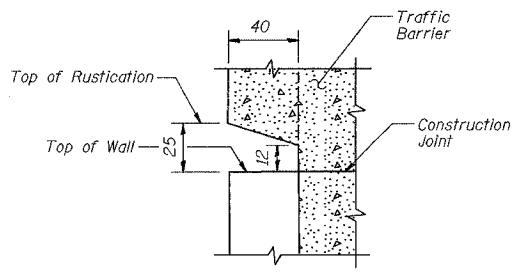
CONTRACT NO. 62114 INDOT DES. NO. 0100987

RUSTICATION LIMITS

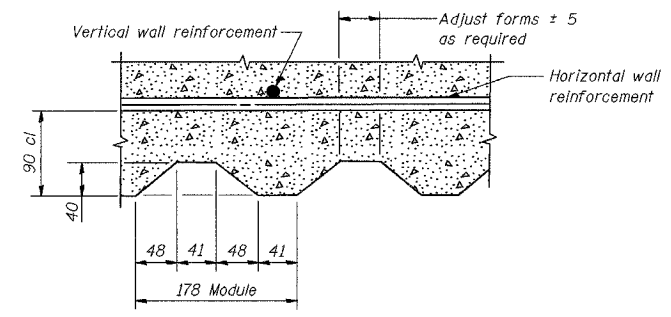
| STATION | TOP OF WALL ELEVATION | BOTTOM OF RUSTICATION ELEVATION |
|-----------|-----------------------|---------------------------------|
| 8+761.031 | 185.050 | 184.600 |
| 8+764.480 | 186.792 | 184.600 |
| 8+766.306 | 186.792 | 184.600 |
| 8+766.306 | 188.477 | 184.800 |
| 8+774.197 | 188.268 | 184.800 |
| 8+781.499 | 188.068 | 184.800 |
| 8+788.802 | 187.859 | 184.800 |
| 8+788.802 | 187.859 | 184.500 |
| 8+796.104 | 187.645 | 184.500 |
| 8+803.407 | 187.428 | 184.500 |
| 8+810.708 | 187.210 | 184.500 |
| 8+810.708 | 187.210 | 183.700 |
| 8+818.009 | 186.991 | 183.700 |
| 8+825.311 | 186.772 | 183.700 |
| 8+832.613 | 186.552 | 183.700 |
| 8+832.613 | 186.552 | 182.900 |
| 8+839.916 | 186.333 | 182.900 |
| 8+847.219 | 186.113 | 182.900 |
| 8+854.524 | 185.892 | 182.900 |
| 8+854.524 | 185.892 | 182.200 |
| 8+861.829 | 185.672 | 182.200 |
| 8+869.134 | 185.451 | 182.200 |
| 8+876.440 | 185.271 | 182.200 |
| 8+876.440 | 185.271 | 181.600 |
| 8+883.747 | 185.061 | 181.600 |
| 8+891.055 | 184.851 | 181.600 |
| 8+898.363 | 184.641 | 181.600 |
| 8+905.671 | 184.432 | 181.600 |
| 8+912.982 | 184.230 | 181.600 |
| 8+920.292 | 184.035 | 181.600 |
| 8+920.292 | 184.035 | 181.100 |
| 8+927.604 | 183.850 | 181.100 |
| 8+934.917 | 183.672 | 181.100 |
| 8+942.230 | 183.502 | 181.100 |
| 8+942.230 | 183.502 | 180.800 |
| 8+949.544 | 183.342 | 180.800 |
| 8+956.860 | 183.189 | 180.800 |
| 8+964.176 | 183.045 | 180.800 |
| 8+971.493 | 182.909 | 180.800 |
| 8+978.811 | 182.782 | 180.800 |
| 8+978.811 | 182.782 | 180.600 |
| 8+986.129 | 182.663 | 180.600 |
| 8+993.450 | 182.552 | 180.600 |
| 9+000.771 | 182.449 | 180.600 |
| 9+008.093 | 182.355 | 180.600 |
| 9+015.416 | 182.269 | 180.600 |
| 9+022.741 | 182.192 | 180.600 |
| 9+030.067 | 182.123 | 180.600 |
| 9+037.394 | 182.062 | 180.600 |
| 9+044.722 | 182.009 | 180.600 |
| 9+044.722 | 182.009 | 180.800 |
| 9+052.051 | 181.965 | 180.800 |
| 9+059.381 | 181.930 | 180.800 |
| 9+066.713 | 181.902 | 180.800 |
| 9+074.046 | 181.880 | 180.800 |
| 9+081.381 | 181.859 | 180.800 |
| 9+088.716 | 181.837 | 180.800 |
| 9+096.053 | 181.816 | 180.800 |
| 9+101.839 | 181.792 | 180.800 |



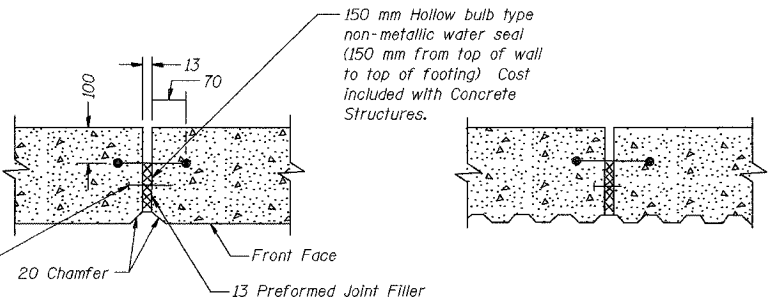
FRONT FACE ELEVATION-TYPICAL ARCHITECTURAL FINISH



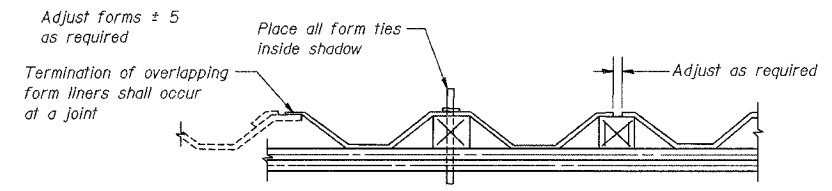
SECTION B-B



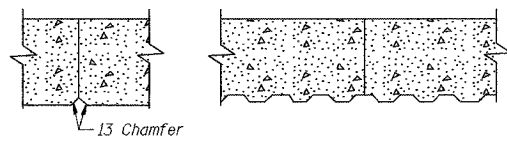
SECTION A-A



EXPANSION JOINT DETAIL



SUGGESTED FORMWORK DETAIL



CONSTRUCTION JOINT DETAIL

| | |
|----------|-----|
| DESIGNED | KFA |
| CHECKED | BPS |
| DRAWN | MJB |
| CHECKED | GSP |

BILL OF MATERIAL

| Item | Unit | Total |
|--------------------|----------------|-------|
| Rustication Finish | m ² | 809 |

Note: All dimensions are in millimeters (mm) unless otherwise noted.

ILLINOIS DEPARTMENT OF TRANSPORTATION
 I-80/94/US 6
 KINGERY-BORMAN EXPRESSWAY
 BURNHAM ROAD TO US 41

RUSTICATION FINISH DETAILS
 SECTION 2626.2-R-2
 LAKE COUNTY, INDIANA
 STATION 8+762.750 TO STATION 9+101.839
 STRUCTURE NO. 016-W915

DATE 09/05

AMERICAN
 CONSULTING ENGINEERS