

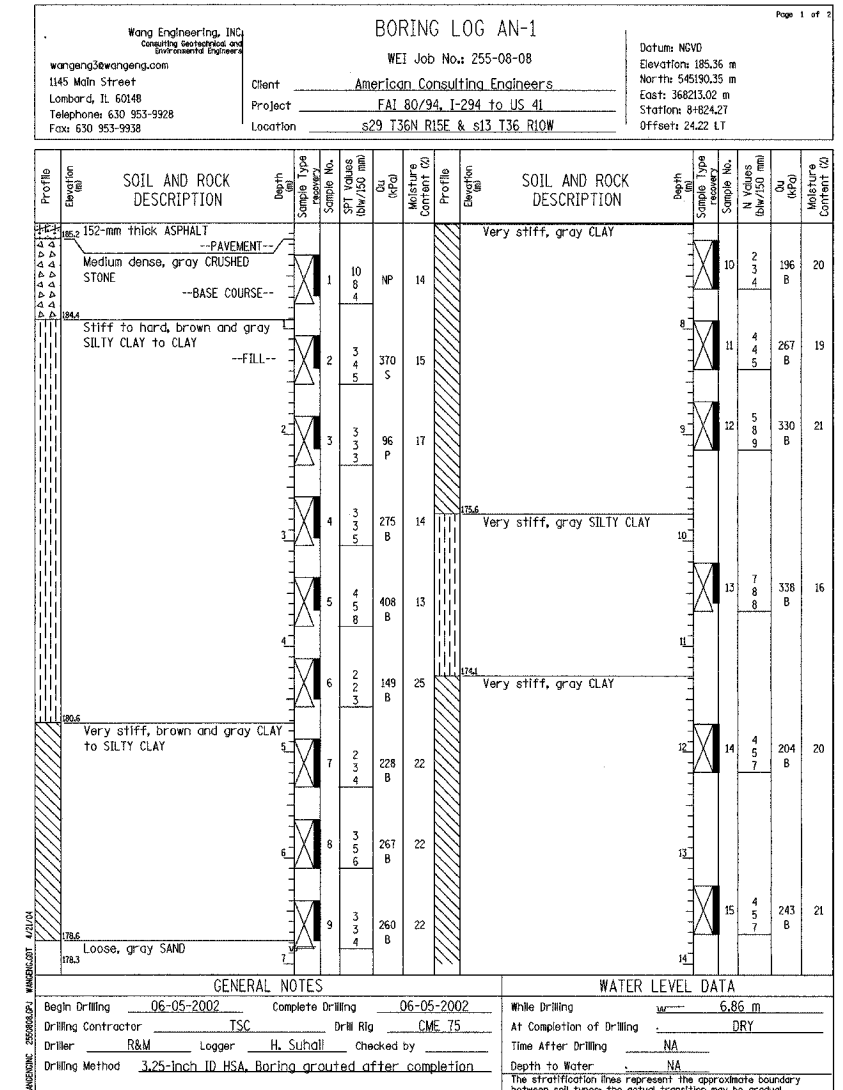
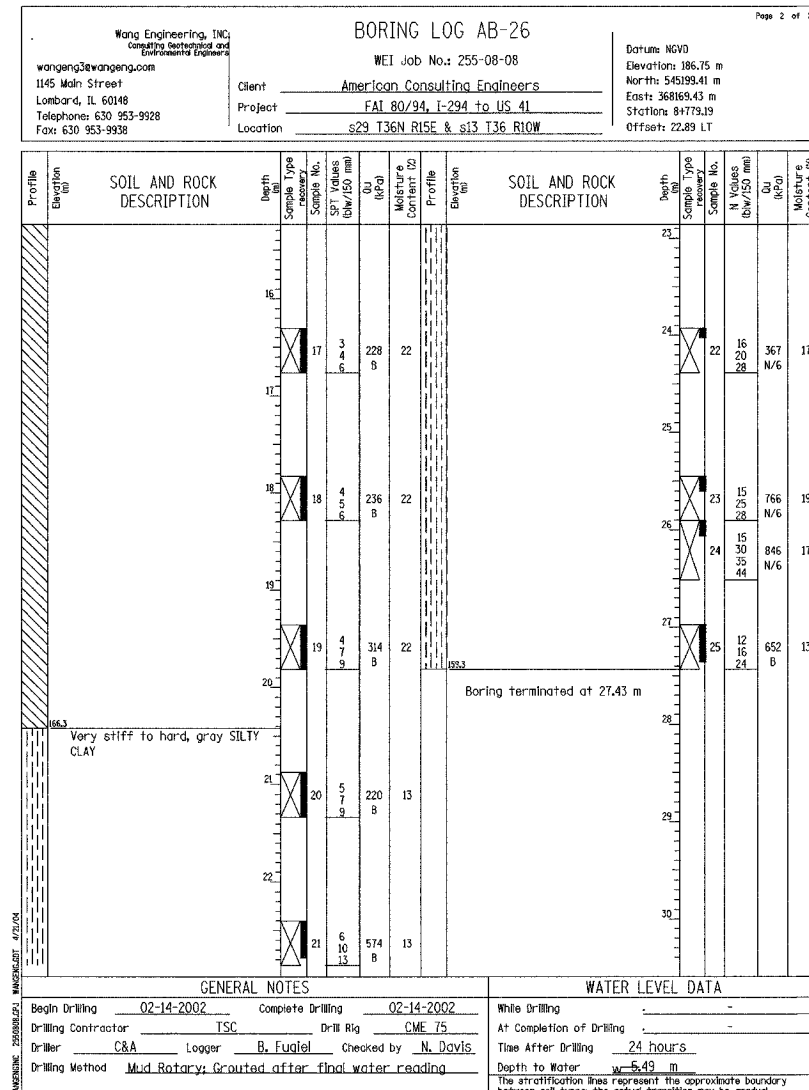
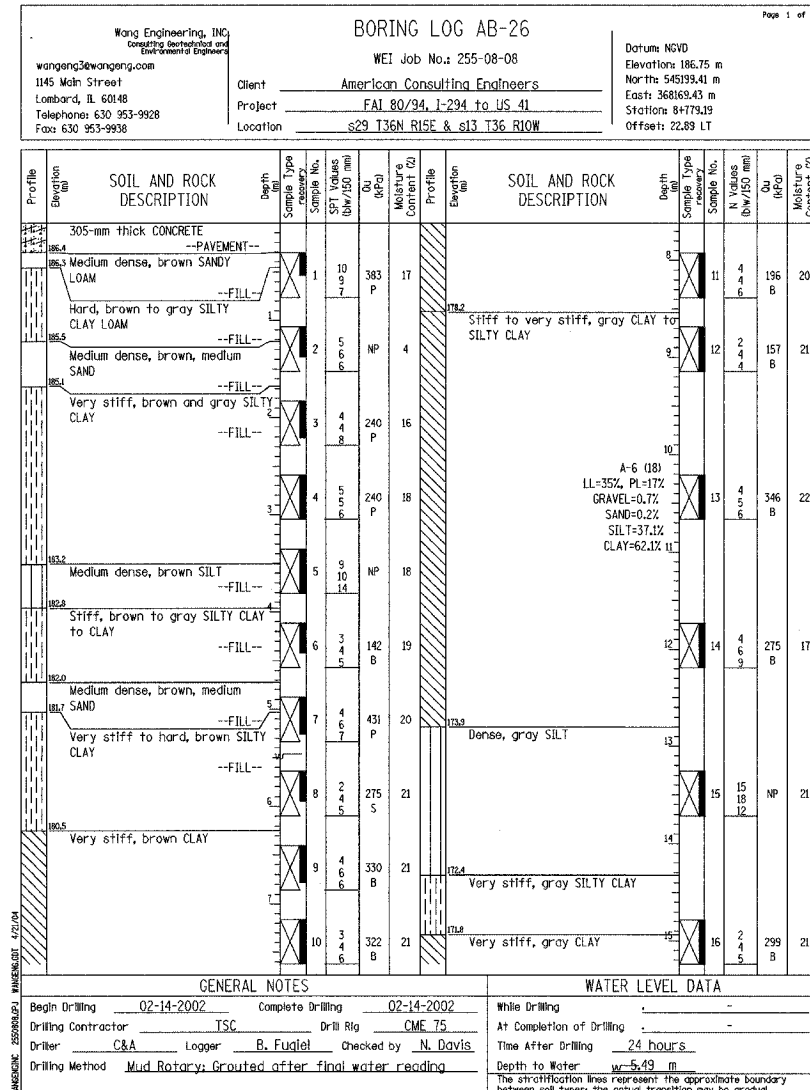
ROUTE NO.	SECTION	COUNTY	SHEET NO.	SHEET TOTAL
F.A.S. 108/74	2882-2-R-2	LAKE COUNTY, INDIANA	1207	1036
PROJECT				25 SHEETS
ILLINOIS				FED. AID PROJECT

CONTRACT NO. 62114 INDOT DES. NO. 0100987

BORING NO. AB-26 (1 OF 2)

BORING NO. AB-26 (2 OF 2)

BORING NO. AN-1 (1 OF 2)



DESIGNED	KFA
CHECKED	BPS
DRAWN	MJB
CHECKED	GSP

ILLINOIS DEPARTMENT OF TRANSPORTATION
I-80/94/US 6
KINGERY-BORMAN EXPRESSWAY
BURNHAM ROAD TO US 41

BORING LOGS (1 OF 7)
SECTION 2626.2-R-2
LAKE COUNTY, INDIANA
STATION 8+762.750 TO STATION 9+101.839
STRUCTURE NO. 016-W915

DATE 09/05

AMERICAN
CONSULTING ENGINEERS