

ROUTE NO.	SECTION	COUNTY	SHEETS	SHEET	SHEET NO. S-2
F.A.S. 68/74	2626.2-R-2	LAKE COUNTY, INDIANA	1207	1044	20 SHEETS
ILLINOIS		FED. AID PROJECT			

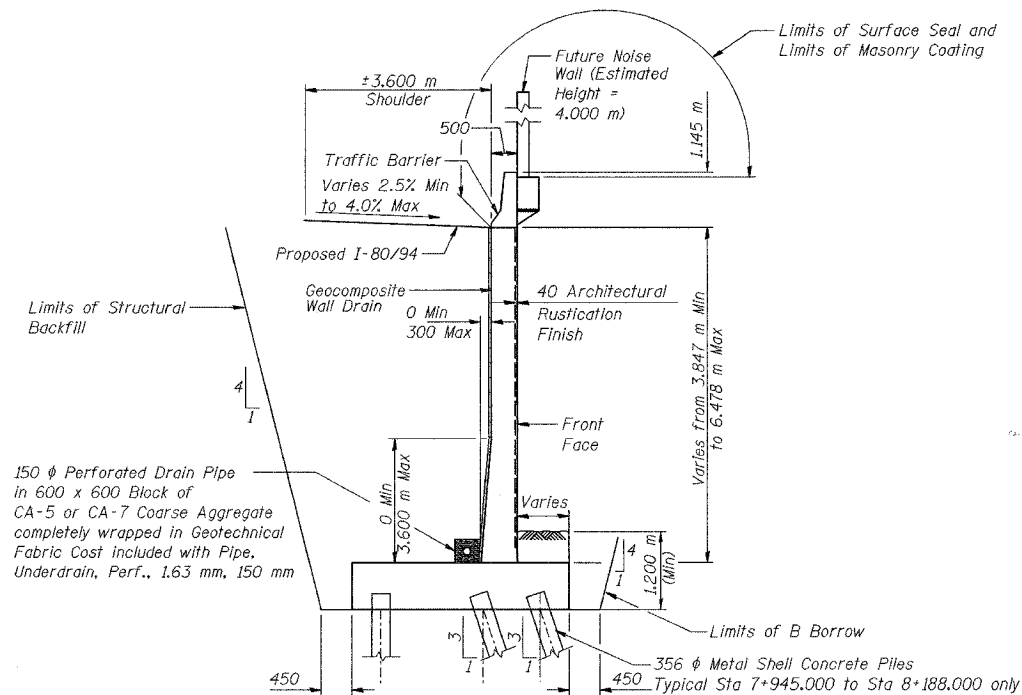
CONTRACT NO. 62114 INDOT DES. NO. 0100987

### GENERAL NOTES

1. Reinforcement bars shall conform to the requirements of AASHTO M 31M or M32.2M Grade 400.
2. The Contractor shall drive 5 test piles in permanent locations spaced approximately 60 m apart, as directed by the Engineer before ordering the remainder of the piles.
3. All dimensions are in millimeters (mm) except as noted.
4. All construction joints shall be bonded.

### INDEX OF SHEETS

SHEET NO.	TITLE
S-1	General Plan
S-2	Index of Sheets, General Notes and Total Bill of Material
S-3	Plan and Elevation (1 of 11)
S-4	Plan and Elevation (2 of 11)
S-5	Plan and Elevation (3 of 11)
S-6	Plan and Elevation (4 of 11)
S-7	Plan and Elevation (5 of 11)
S-8	Plan and Elevation (6 of 11)
S-9	Plan and Elevation (7 of 11)
S-10	Plan and Elevation (8 of 11)
S-11	Plan and Elevation (9 of 11)
S-12	Plan and Elevation (10 of 11)
S-13	Plan and Elevation (11 of 11)
S-14	Wall Sections and Details (1 of 2)
S-15	Wall Sections and Details (2 of 2)
S-16	Rustication Finish Details
S-17	Concrete Pile Details
S-18	Boring Logs (1 of 3)
S-19	Boring Logs (2 of 3)
S-20	Boring Logs (3 of 3)



TYPICAL SECTION

DESIGNED	KFA
CHECKED	BPS
DRAWN	MJB
CHECKED	GSP

### TOTAL BILL OF MATERIAL

ITEM	UNIT	QUANTITY
(IN) Test Pile, 356 mm	Each	5
(IN) Excavation, Foundation, Unclassified	m <sup>3</sup>	2,794.1
(IN) Concrete, A, Substructure	m <sup>3</sup>	1,609.4
Rustication Finish	m <sup>2</sup>	1,173
(IN) Reinforcing Bars, Epoxy Coated	kg	107,030
(IN) Surface Seal	L Sum	0.03
(IN) Pile, Concrete, Steel Shell Encased, 6.35 mm, 356 mm	m	8,190.5
Geocomposite Wall Drain	m <sup>2</sup>	1,119
(IN) Pipe, Underdrain, Perf., 1.63 mm, 150 mm	m	253.5
Noise Abatement Wall Anchor Rod Assembly	Each	69
Overhead Sign Structure-Span Anchor Rod Assembly	Each	2
(IN) B Borrow	m <sup>3</sup>	840.2
(IN) Structural Backfill	m <sup>3</sup>	3,988.3
(IN) Masonry Coating	L Sum	0.07

(IN) Indiana Pay Items, denoted by "(Indiana)" in Special Provisions and Summary of Quantities.

ILLINOIS DEPARTMENT OF TRANSPORTATION  
I-80/94/US 6  
KINGERY-BORMAN EXPRESSWAY  
BURNHAM ROAD TO US 41  
**INDEX OF SHEETS, GENERAL NOTES  
AND TOTAL BILL OF MATERIAL**  
SECTION 2626.2-R-2  
LAKE COUNTY, INDIANA  
STATION 7+945.232 TO STATION 8+196.892  
STRUCTURE NO. 016-W919  
DATE 09/05

**AMERICAN**  
CONSULTING ENGINEERS