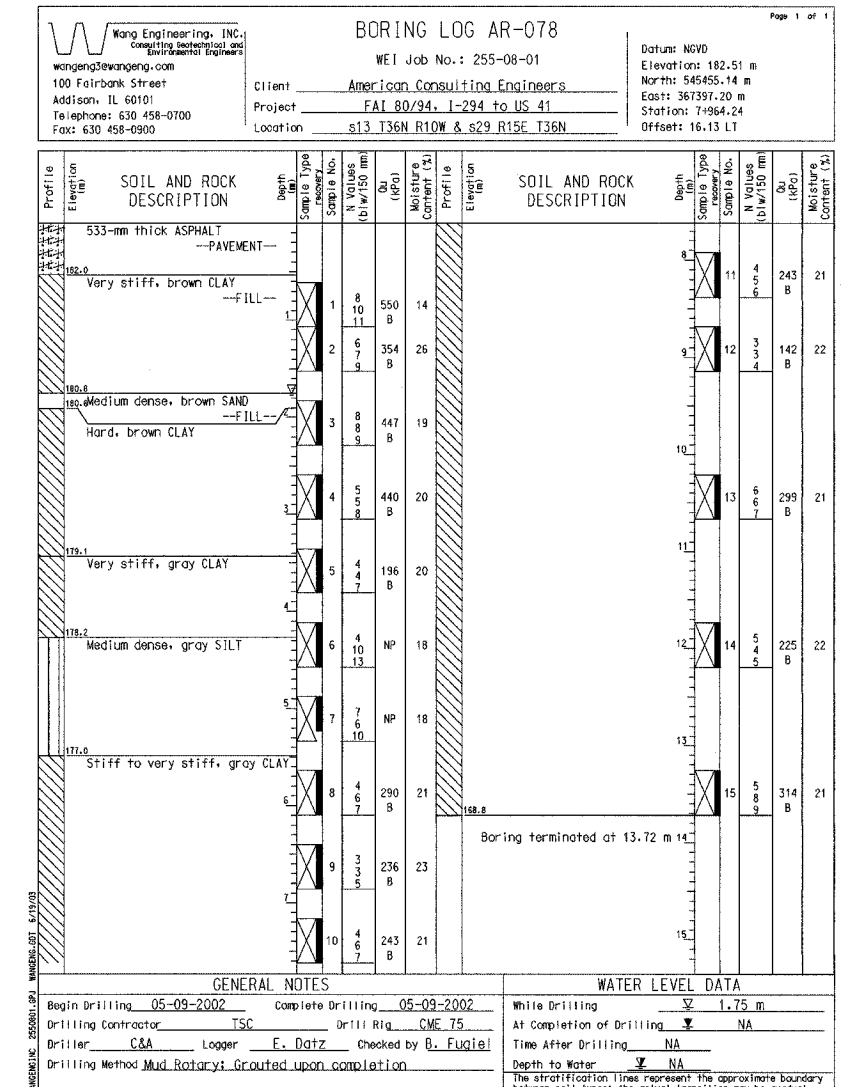
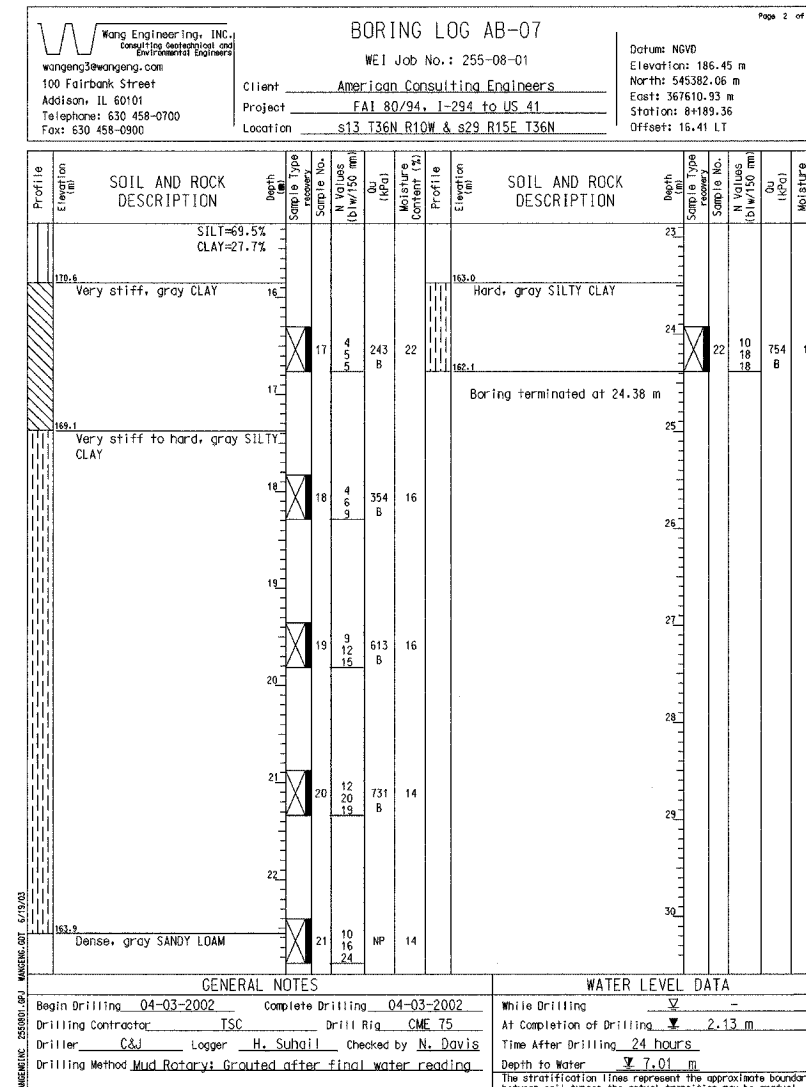
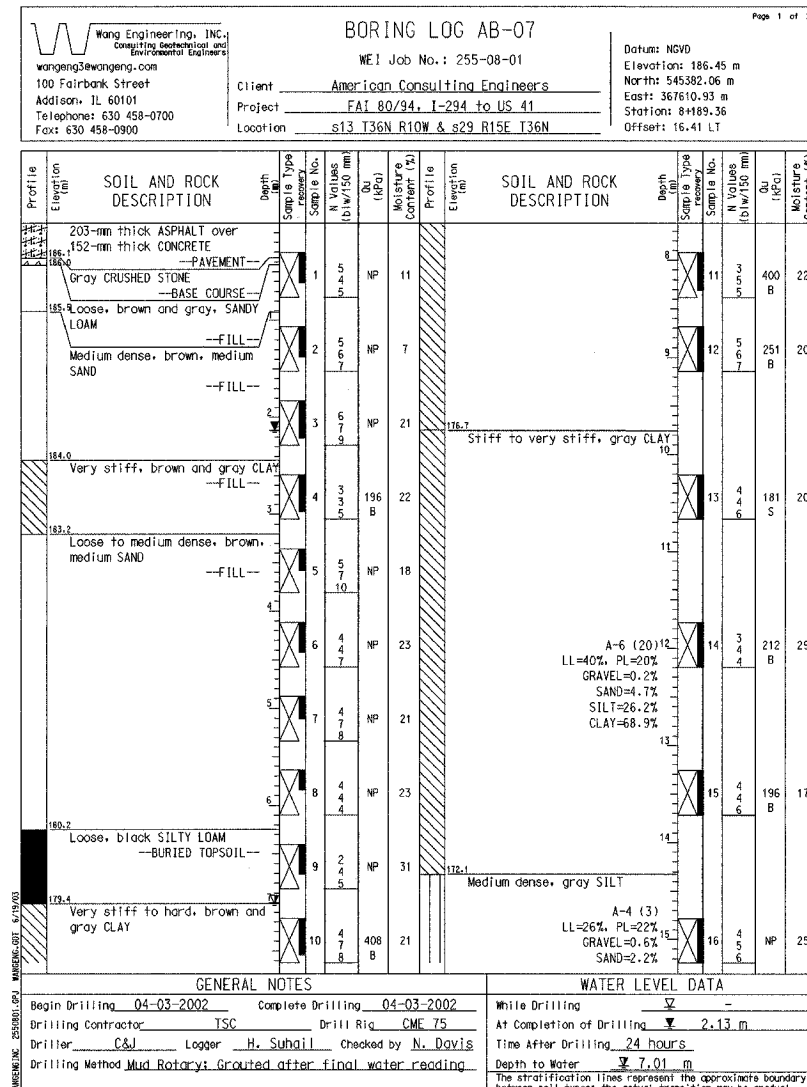


BORING NO. AB-07 (1 OF 2)

BORING NO. AB-07 (2 OF 2)

BORING NO. AR-078 (1 OF 1)



DESIGNED	KFA
CHECKED	BPS
DRAWN	MJB
CHECKED	GSP

ILLINOIS DEPARTMENT OF TRANSPORTATION
I-80/94/US 6
KINGERY-BORMAN EXPRESSWAY
BURNHAM ROAD TO US 41

BORING LOGS (1 OF 3)
SECTION 2626.2-R-2
LAKE COUNTY, INDIANA
STATION 7+945.232 TO STATION 8+196.892
STRUCTURE NO. 016-W919

DATE 09/05

AMERICAN
CONSULTING ENGINEERS