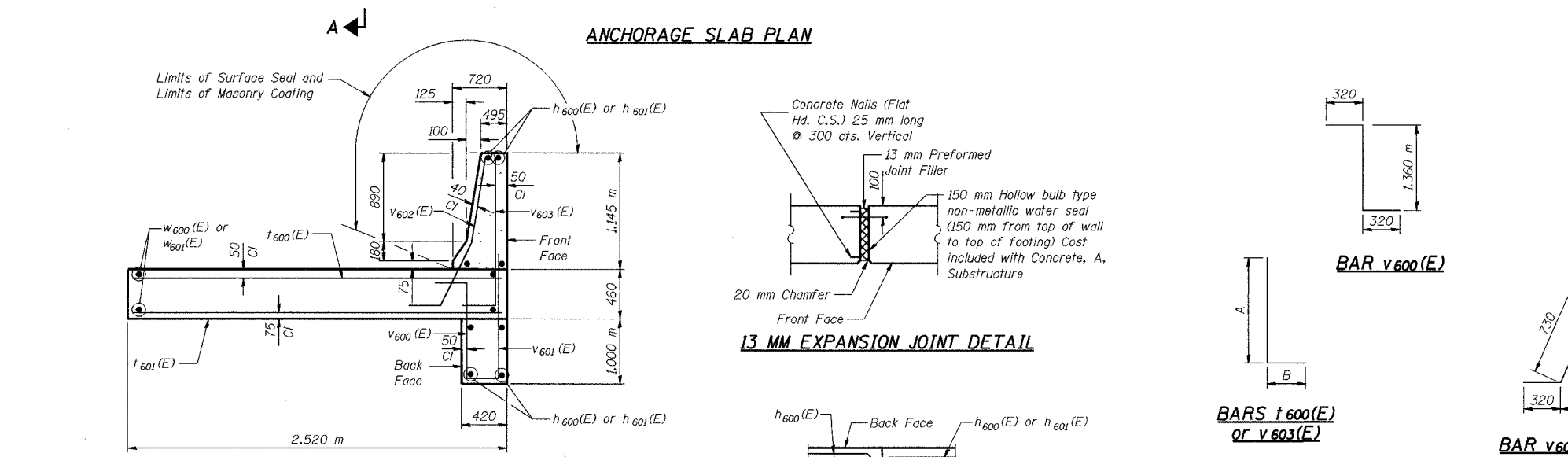
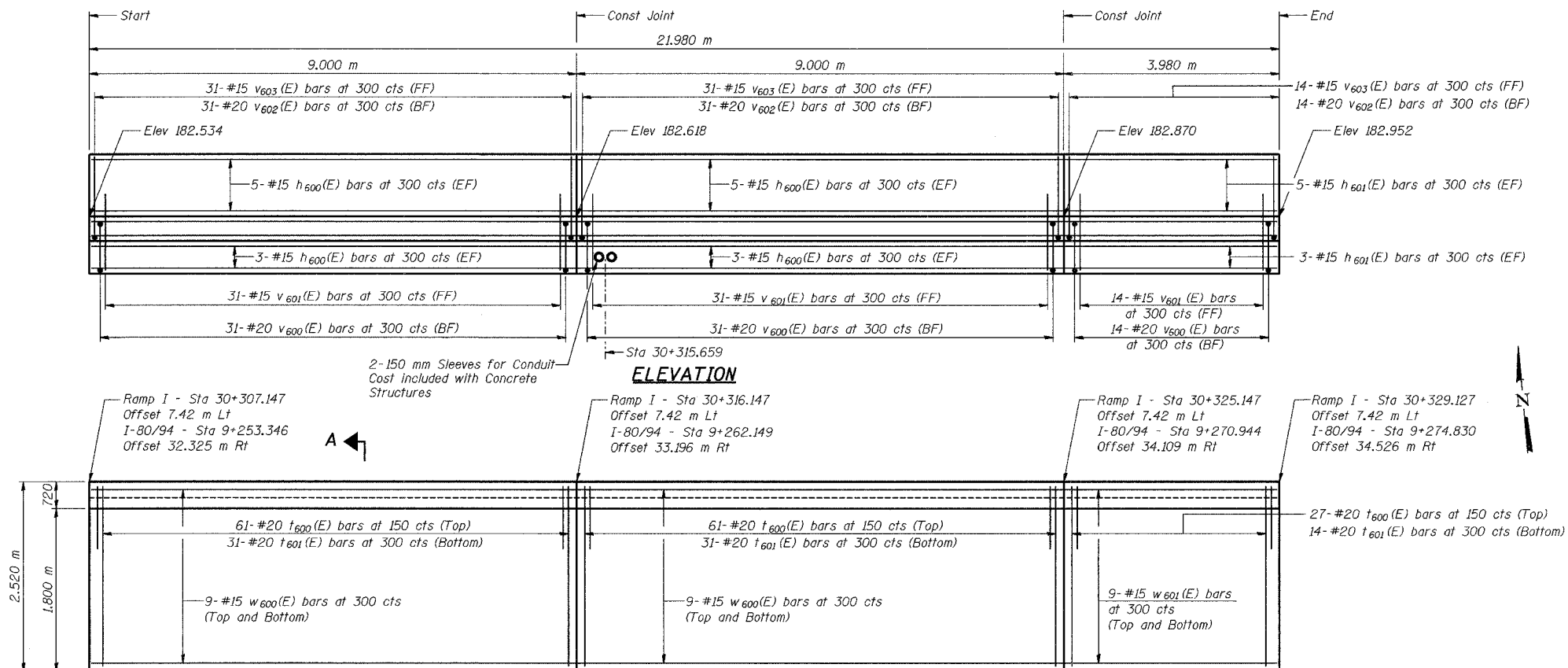


ROUTE NO.	SECTION	COUNTY	SHEETS	SHEET	SHEET NO. S-2
I-80/94	2626.2-R-2	LAKE COUNTY, INDIANA	1207	1083	2 SHEETS
CONTRACT NO. 62114		INDOT DES. NO. 0100987			



DESIGNED	KFA
CHECKED	BPS
DRAWN	MJB
CHECKED	GSP

SECTION A-A

**BILL OF MATERIAL**

Bar	No.	Size	Length (m)	Shape
h <sub>600</sub> (E)	32	15	9.64	—
h <sub>601</sub> (E)	16	15	3.88	—
t <sub>600</sub> (E)	149	20	2.74	L
t <sub>601</sub> (E)	76	20	2.42	—
v <sub>600</sub> (E)	76	20	2.00	L
v <sub>601</sub> (E)	76	15	1.64	—
v <sub>602</sub> (E)	76	20	1.91	L
v <sub>603</sub> (E)	76	15	1.77	L
w <sub>600</sub> (E)	36	15	9.64	—
w <sub>601</sub> (E)	18	15	3.88	—
Concrete, A, Substructure		m <sup>3</sup>	49.2	
Reinforcing Bars, Epoxy Coated		kg	3,740	
Surface Seal		L Sum	0.01	
Masonry Coating		L Sum	0.01	

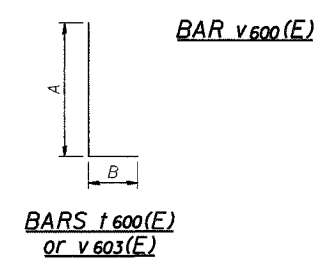
**BAR DIMENSIONS**

Bar	A	B
t <sub>600</sub> (E)	2.42 m	320
v <sub>603</sub> (E)	1.51 m	260

The estimated Surface Seal area is 75.6 m<sup>2</sup>  
The estimated Masonry Coating area is 75.6 m<sup>2</sup>

**NOTES:**  
Reinforcement bars shall conform to the requirements of AASHTO M 31M or M322M Grade 400.  
Stations are referenced to I-80/94 and Ramp I  
Reinforcement bars designated (E) shall be epoxy coated.  
All dimensions are in millimeters (mm) except as noted.  
All construction joints shall be bonded.

ILLINOIS DEPARTMENT OF TRANSPORTATION  
I-80/94/US 6  
KINGERY-BORMAN EXPRESSWAY  
BURNHAM ROAD TO US 41  
**PLAN AND ELEVATION**  
**SECTION 2626.2-R-2**  
**LAKE COUNTY, INDIANA**  
**RAMP 1 - STRUCTURAL SHOULDER**  
**STA 9 + 253.346 TO STA 9 + 274.830**  
DATE 09/05  
**AMERICAN**  
CONSULTING ENGINEERS



**MINIMUM BAR LAPS**

#15 bars = 640  
#20 bars = 790

**LEGEND**

BF = Back Face  
FF = Front Face  
EF = Each Face