

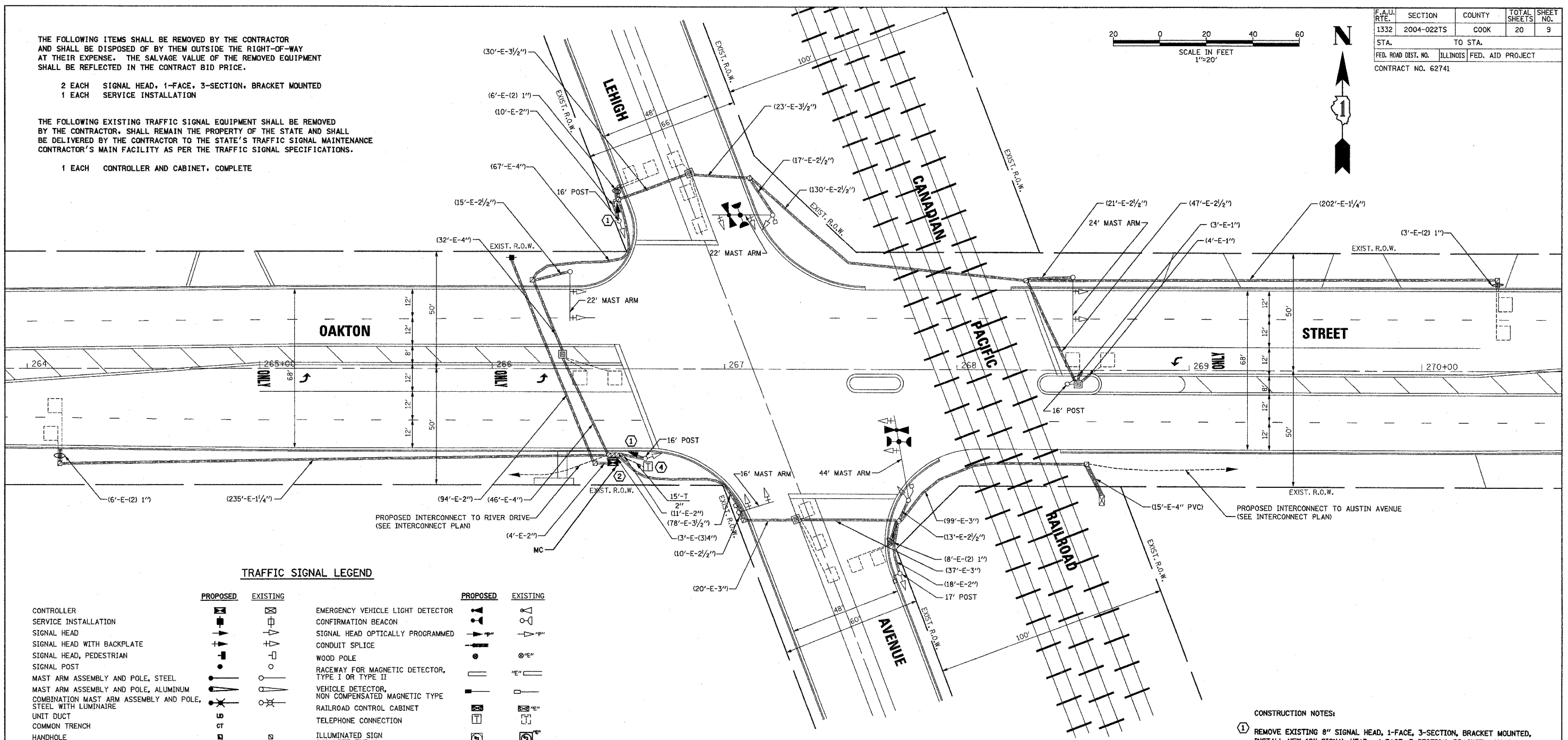
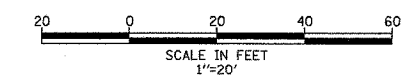
F.A.U. RTE.	SECTION	COUNTY	TOTAL SHEETS	SHEET NO.
1332	2004-022TS	COOK	20	9
STA.	TO STA.			
FED. ROAD DIST. NO.	ILLINOIS FED. AID PROJECT			
CONTRACT NO. 62741				

THE FOLLOWING ITEMS SHALL BE REMOVED BY THE CONTRACTOR AND SHALL BE DISPOSED OF BY THEM OUTSIDE THE RIGHT-OF-WAY AT THEIR EXPENSE. THE SALVAGE VALUE OF THE REMOVED EQUIPMENT SHALL BE REFLECTED IN THE CONTRACT BID PRICE.

- 2 EACH SIGNAL HEAD, 1-FACE, 3-SECTION, BRACKET MOUNTED
- 1 EACH SERVICE INSTALLATION

THE FOLLOWING EXISTING TRAFFIC SIGNAL EQUIPMENT SHALL BE REMOVED BY THE CONTRACTOR, SHALL REMAIN THE PROPERTY OF THE STATE AND SHALL BE DELIVERED BY THE CONTRACTOR TO THE STATE'S TRAFFIC SIGNAL MAINTENANCE CONTRACTOR'S MAIN FACILITY AS PER THE TRAFFIC SIGNAL SPECIFICATIONS.

- 1 EACH CONTROLLER AND CABINET, COMPLETE



TRAFFIC SIGNAL LEGEND

PROPOSED	EXISTING	DESCRIPTION
[Symbol]	[Symbol]	CONTROLLER
[Symbol]	[Symbol]	SERVICE INSTALLATION
[Symbol]	[Symbol]	SIGNAL HEAD
[Symbol]	[Symbol]	SIGNAL HEAD WITH BACKPLATE
[Symbol]	[Symbol]	SIGNAL HEAD, PEDESTRIAN
[Symbol]	[Symbol]	SIGNAL POST
[Symbol]	[Symbol]	MAST ARM ASSEMBLY AND POLE, STEEL
[Symbol]	[Symbol]	MAST ARM ASSEMBLY AND POLE, ALUMINUM
[Symbol]	[Symbol]	COMBINATION MAST ARM ASSEMBLY AND POLE, STEEL WITH LUMINAIRE
[Symbol]	[Symbol]	UNIT DUCT
[Symbol]	[Symbol]	COMMON TRENCH
[Symbol]	[Symbol]	HANDHOLE
[Symbol]	[Symbol]	HEAVY DUTY HANDHOLE
[Symbol]	[Symbol]	DOUBLE HANDHOLE
[Symbol]	[Symbol]	G.S. CONDUIT IN TRENCH (T) OR PUSHED (P)
[Symbol]	[Symbol]	PEDESTRIAN PUSHBUTTON DETECTOR
[Symbol]	[Symbol]	DETECTOR LOOP
[Symbol]	[Symbol]	CAST IRON JUNCTION BOX
[Symbol]	[Symbol]	EMERGENCY VEHICLE LIGHT DETECTOR
[Symbol]	[Symbol]	CONFIRMATION BEACON
[Symbol]	[Symbol]	SIGNAL HEAD OPTICALLY PROGRAMMED
[Symbol]	[Symbol]	CONDUIT SPLICE
[Symbol]	[Symbol]	WOOD POLE
[Symbol]	[Symbol]	RACEWAY FOR MAGNETIC DETECTOR, TYPE I OR TYPE II
[Symbol]	[Symbol]	VEHICLE DETECTOR, NON COMPENSATED MAGNETIC TYPE
[Symbol]	[Symbol]	RAILROAD CONTROL CABINET
[Symbol]	[Symbol]	TELEPHONE CONNECTION
[Symbol]	[Symbol]	ILLUMINATED SIGN "NO LEFT TURN"
[Symbol]	[Symbol]	ILLUMINATED SIGN "NO RIGHT TURN"
[Symbol]	[Symbol]	MICROWAVE VEHICLE SENSOR
[Symbol]	[Symbol]	ILLUMINATED SIGN
[Symbol]	[Symbol]	MASTER CONTROLLER

- CONSTRUCTION NOTES:**
- REMOVE EXISTING 8" SIGNAL HEAD, 1-FACE, 3-SECTION, BRACKET MOUNTED, INSTALL NEW 12" SIGNAL HEAD, 1-FACE, 3-SECTION, BRACKET MOUNTED.
 - REMOVE EXISTING CONTROLLER AND CABINET. INSTALL MASTER CONTROLLER AND LOCAL CONTROLLER IN TYPE V CABINET, RE-USE EXISTING FOUNDATION.
 - THE CONTRACTOR SHALL BE REQUIRED TO MAINTAIN THE OPERATION OF THE TRAFFIC SIGNALS DURING THE ENTIRE PROJECT.
 - INSTALL 1" UNIT DUCT FOR THE AMERITECH SERVICE FROM THE POINT OF ENTRY OF THE TELEPHONE CONDUIT IN THE DOUBLE HANDHOLE THROUGH THE CONTROLLER CABINET FOUNDATION. THIS WORK SHALL BE INCIDENTAL TO THE MASTER CONTROLLER PAY ITEM.

REVISIONS	
NAME	DATE

SETON ENGINEERING
CONSULTING ENGINEERS
 19 S. BOTHWELL STREET
 PALATINE, ILLINOIS 60067
 VOICE: 847-776-7200 FAX: 847-776-7239
SETON PROJECT # 2004091-001-006

ILLINOIS DEPARTMENT OF TRANSPORTATION
TRAFFIC SIGNAL MODIFICATION PLAN
 OAKTON STREET AT LEHIGH AVENUE
 MORTON GROVE, ILLINOIS

SCALE: 1"=20'
 DATE: 09-20-2004
 DRAWN BY: BR
 DESIGNED BY: VO
 CHECKED BY: TJM