

# PROPOSED HORIZONTAL CONTROL

F.A.P. RTE.	SECTION	COUNTY	TOTAL SHEETS	SHEET NO.
303	I29K	WINNEBAGO	585	65
STA.	TO STA.			
FED. ROAD DIST. NO.	ILLINOIS	FED. AID PROJECT		



PROPOSED IL RTE 173  
Chain IL173 contains:  
P9250 CUR IL173-1 CUR IL173-2 CUR IL173-3 CUR IL173-4 CUR IL173-5

Beginning chain IL173 description

Point P9250 N 2,079,520.7742 E 2,615,902.9170 Sta 142+32.8700

Course from P9250 to PC IL173-1 88° 38' 34.8919" Dist 200.0000'

Curve Data

Curve IL173-1  
P.I. Station 146+97.3853 N 2,079,531.7746 E 2,616,367.3021  
Delta = 4° 52' 46.3662" (LT)  
Degree = 0° 55' 22.4902"  
Tangent = 264.5153'  
Length = 528.7109'  
Radius = 6,208.1389'  
External = 5.6327'  
Long Chord = 528.5511'  
Mid. Ord. = 5.6276'  
P.C. Station 144+32.8700 N 2,079,525.5104 E 2,616,102.8609  
P.T. Station 149+61.5809 N 2,079,560.5097 E 2,616,630.2520  
C.C. N 2,085,731.9083 E 2,615,955.8431

Curve Data

Curve IL173-2  
P.I. Station 152+26.0962 N 2,079,589.2447 E 2,616,893.2019  
Delta = 4° 52' 46.3662" (RT)  
Degree = 0° 55' 22.4902"  
Tangent = 264.5153'  
Length = 528.7109'  
Radius = 6,208.1389'  
External = 5.6327'  
Long Chord = 528.5511'  
Mid. Ord. = 5.6276'  
P.C. Station 149+61.5809 N 2,079,560.5097 E 2,616,630.2520  
P.T. Station 154+90.2917 N 2,079,595.5089 E 2,617,157.6430  
C.C. N 2,073,389.1110 E 2,617,304.6608

Course from PT IL173-2 to PC IL173-3 88° 38' 34.8920" Dist 6,350.5945'

Curve Data

Curve IL173-3  
P.I. Station 221+05.4548 N 2,079,752.1656 E 2,623,770.9509  
Delta = 4° 50' 28.8595" (RT)  
Degree = 0° 54' 55.7872"  
Tangent = 264.5686'  
Length = 528.8224'  
Radius = 6,258.4382'  
External = 5.5897'  
Long Chord = 528.6650'  
Mid. Ord. = 5.5847'  
P.C. Station 218+40.8862 N 2,079,745.9002 E 2,623,506.4565  
P.T. Station 223+69.7086 N 2,079,736.0861 E 2,624,035.0305  
C.C. N 2,073,489.2171 E 2,623,654.6655

Curve Data

Curve IL173-4  
P.I. Station 226+42.0736 N 2,079,719.5327 E 2,624,306.8920  
Delta = 4° 59' 01.8208" (LT)  
Degree = 0° 54' 55.7872"  
Tangent = 272.3650'  
Length = 544.3865'  
Radius = 6,258.4382'  
External = 5.9238'  
Long Chord = 544.2149'  
Mid. Ord. = 5.9182'  
P.C. Station 223+69.7086 N 2,079,736.0861 E 2,624,035.0305  
P.T. Station 229+14.0951 N 2,079,726.6598 E 2,624,579.1637  
C.C. N 2,085,982.9550 E 2,624,415.3955

STA. 193+02.17  
PROPOSED IL RTE 173  
STA. 588+07.92 I-90

STA. 181+31.85  
PROPOSED IL RTE 173  
STA. 5000+00  
I-90 SOUTH BOUND ENTRANCE RAMP

STA. 180+37.35  
PROPOSED IL RTE 173  
STA. 832+73.75  
I-90 SOUTH BOUND EXIT RAMP

STA. 160+46.05  
PROPOSED IL RTE 173  
STA. 9004+04.96  
ROCK CUT STATE PARK ENT

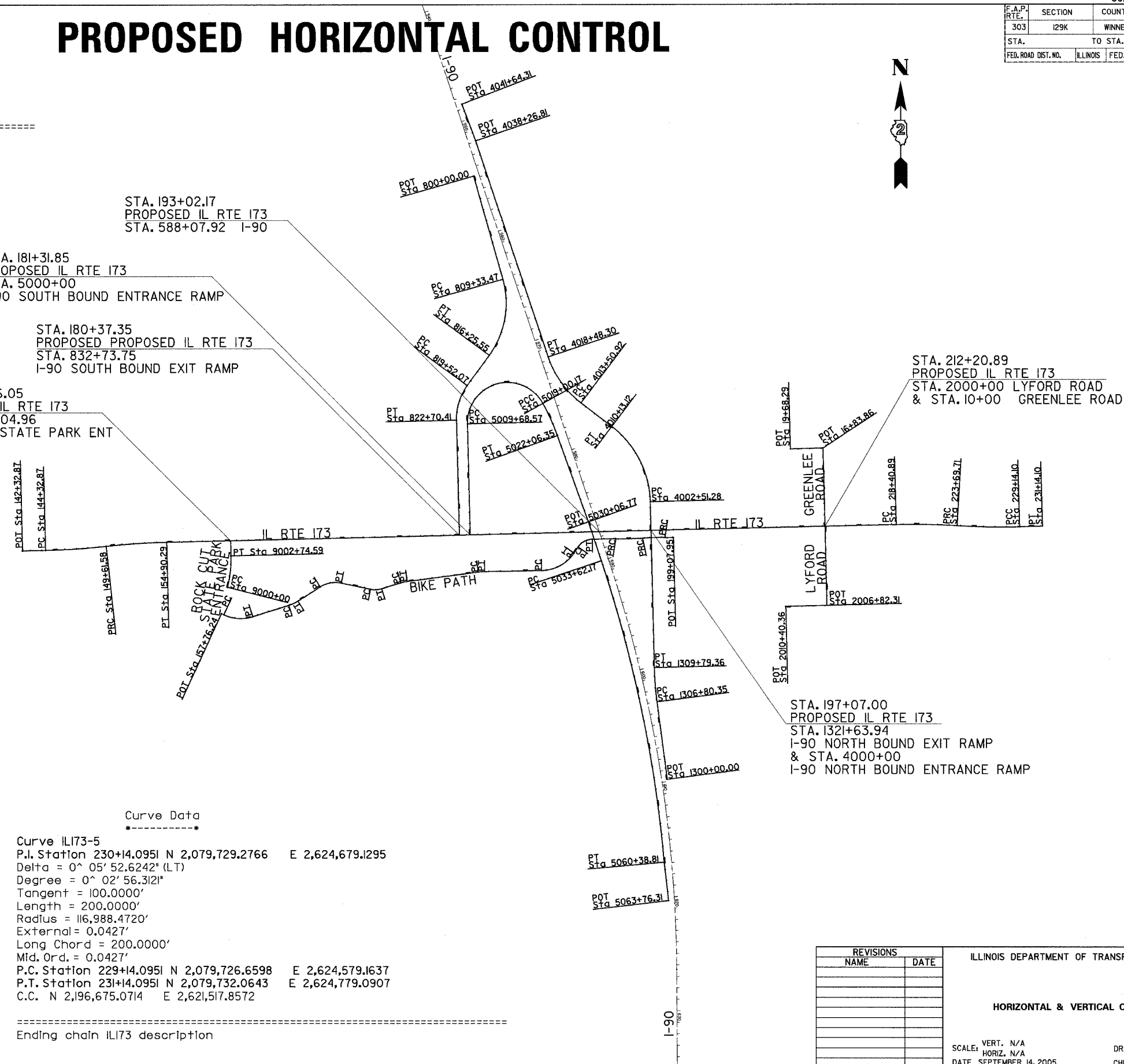
POT Sta 142+32.87  
PC Sta 144+32.87

PT Sta 149+61.58  
PT Sta 154+90.29  
ROCK CUT STATE PARK  
BIKE PATH

Curve Data

Curve IL173-5  
P.I. Station 230+14.0951 N 2,079,729.2766 E 2,624,679.1295  
Delta = 0° 05' 52.6242" (LT)  
Degree = 0° 02' 56.3121"  
Tangent = 100.0000'  
Length = 200.0000'  
Radius = 116,988.4720'  
External = 0.0427'  
Long Chord = 200.0000'  
Mid. Ord. = 0.0427'  
P.C. Station 229+14.0951 N 2,079,726.6598 E 2,624,579.1637  
P.T. Station 231+14.0951 N 2,079,732.0643 E 2,624,779.0907  
C.C. N 2,196,675.0714 E 2,621,517.8572

Ending chain IL173 description



DATE: 08/14/05  
DRAWN BY: MTL/EA  
CHECKED BY: MTL/EA  
SCALE: AS SHOWN  
REFERENCE: SEE PLAN

REVISIONS	
NAME	DATE

ILLINOIS DEPARTMENT OF TRANSPORTATION

HORIZONTAL & VERTICAL CONTROL

SCALE: VERT. N/A  
HORIZ. N/A  
DATE: SEPTEMBER 14, 2005

DRAWN BY  
CHECKED BY

## HORIZONTAL & VERTICAL CONTROL