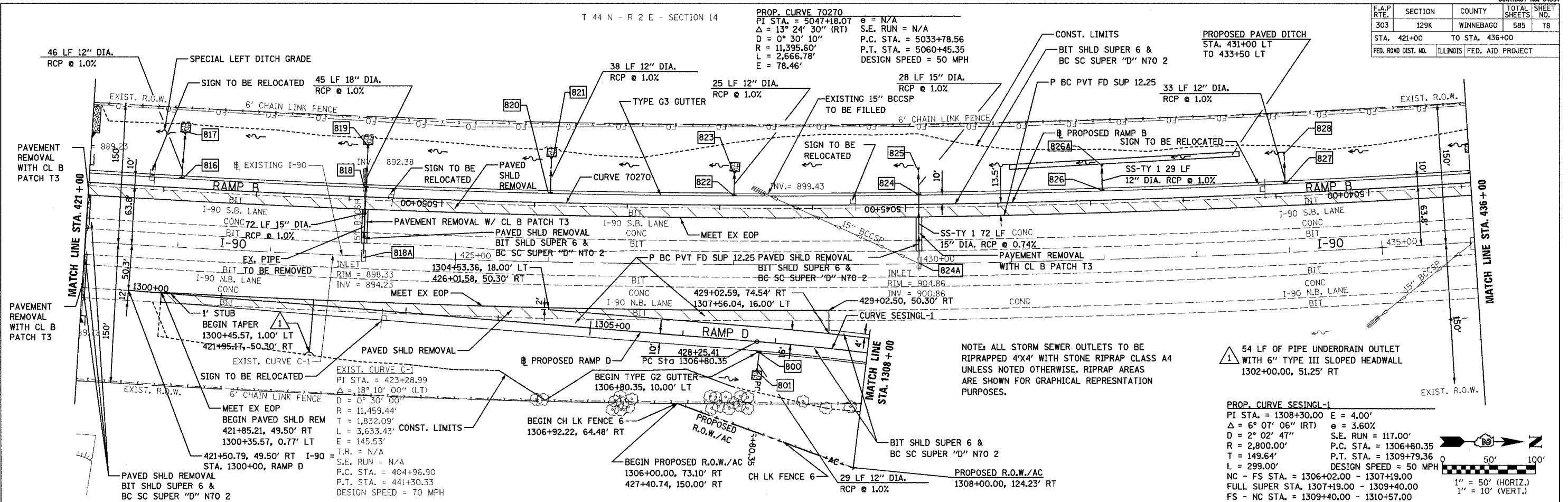


F.A.P. RTE.	SECTION	COUNTY	TOTAL SHEETS	SHEET NO.
303	129K	WINNEBAGO	585	78
STA. 421+00		TO STA. 436+00		
FED. ROAD DIST. NO. ILLINOIS FED. AID PROJECT				

T 44 N - R 2 E - SECTION 14

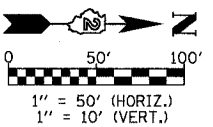
PROP. CURVE 70270  
 PI STA. = 5047+18.07  
 $\Delta = 13^\circ 24' 30''$  (RT)  
 $D = 0^\circ 30' 10''$   
 $R = 11,395.60'$   
 $L = 2,666.78'$   
 $E = 78.46'$   
 $\theta = N/A$   
 S.E. RUN = N/A  
 P.C. STA. = 5033+78.56  
 P.T. STA. = 5060+45.35  
 DESIGN SPEED = 50 MPH



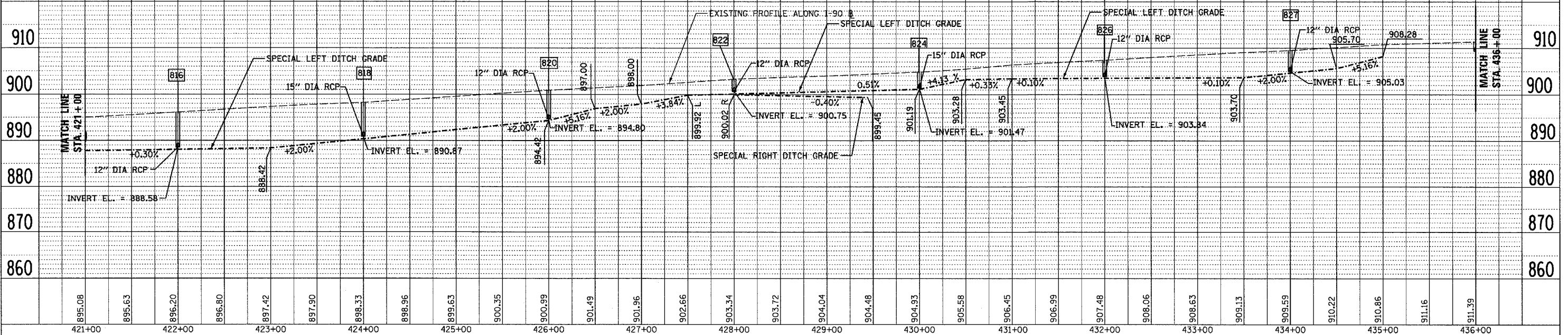
NOTE: ALL STORM SEWER OUTLETS TO BE RIPRAPPED 4'X4' WITH STONE RIPRAP CLASS A4 UNLESS NOTED OTHERWISE. RIPRAP AREAS ARE SHOWN FOR GRAPHICAL REPRESENTATION PURPOSES.

54 LF OF PIPE UNDERDRAIN OUTLET WITH 6" TYPE III SLOPED HEADWALL 1302+00.00, 51.25' RT

PROP. CURVE SESINGL-1  
 PI STA. = 1308+30.00 E = 4.00'  
 $\Delta = 6^\circ 07' 06''$  (RT)  $\theta = 3.60\%$   
 $D = 2^\circ 02' 47''$  S.E. RUN = 117.00'  
 $R = 2,800.00'$  P.C. STA. = 1306+80.35  
 $T = 149.64'$  P.T. STA. = 1309+79.36  
 $L = 299.00'$  DESIGN SPEED = 50 MPH  
 NC - FS STA. = 1306+02.00 - 1307+19.00  
 FULL SUPER STA. 1307+19.00 - 1309+40.00  
 FS - NC STA. = 1309+40.00 - 1310+57.00



STRUCT NUMBER	STATION	OFFSET	RIM EL.	INVERT ELEV.	STRUCTURE TYPE	STRUCT NUMBER	STATION	OFFSET	RIM EL.	INVERT ELEV.	STRUCTURE TYPE
816	422+00.0	73.8' LT	897.23	888.58	CATCH BASIN TYPE G-3 WITH TYPE G-3 F&G	826	432+00.0	73.8' LT	908.48	903.84	CATCH BASIN TYPE G-3 WITH TYPE G-3 F&G
817	422+00.0	121.0' LT	---	888.12	SLOPED HEADWALL TYPE I - 12"	826A	432+00.0	104.0' LT	---	903.55	SLOPED HEADWALL TYPE I - 12"
818	424+00.0	73.8' LT	899.50	890.87 W; 893.51 E	CATCH BASIN TYPE G-3 WITH TYPE G-3 F&G	827	434+00.0	73.8' LT	910.74	905.03	CATCH BASIN TYPE G-3 WITH TYPE G-3 F&G
819	424+00.0	120.0' LT	---	890.42	SLOPED HEADWALL TYPE I - 15"	828	434+00.0	108.0' LT	---	904.70	SLOPED HEADWALL TYPE I - 12"
820	426+00.0	73.8' LT	901.67	894.80	CATCH BASIN TYPE G-3 WITH TYPE G-3 F&G	800	1306+81	10.0' RT.	904.67	900.21	CATCH BASIN TYPE G-2 WITH TYPE G-2 F&G
821	426+00.0	113.0' LT	---	894.42	SLOPED HEADWALL TYPE I - 12"	801	1306+81	41.0' RT.	---	899.92	SLOPED HEADWALL TYPE I - 12"
822	428+00.0	73.8' LT	904.02	900.75	CATCH BASIN TYPE G-3 WITH TYPE G-3 F&G	818A	424+00.0	0.0'	898.33	894.23 W	EXISTING INLET TO REMAIN
823	428+00.0	101.0' LT	---	900.17	SLOPED HEADWALL TYPE I - 12"	824A	430+00.0	0.0'	904.86	902.00 W	EXISTING INLET TO REMAIN
824	430+00.0	73.8' LT	906.24	901.47 W; 901.47 E	CATCH BASIN TYPE G-3 WITH TYPE G-3 F&G						
825	430+00.0	103.3' LT	---	901.19	SLOPED HEADWALL TYPE I - 15"						



DATE	BY	DATE	BY

DATE	BY	DATE	BY