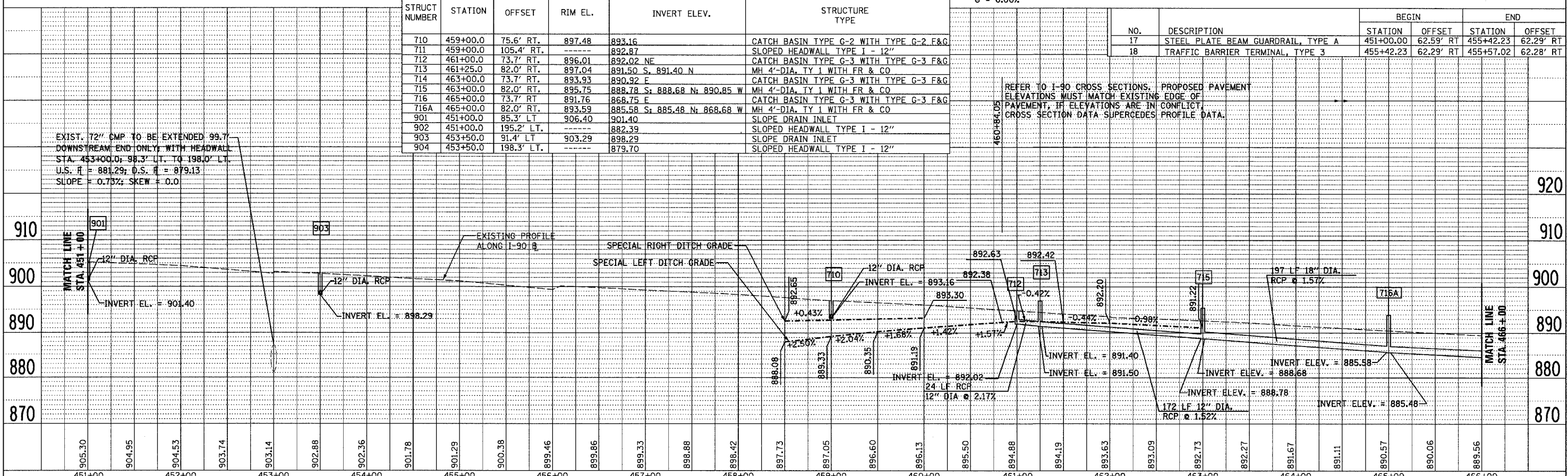
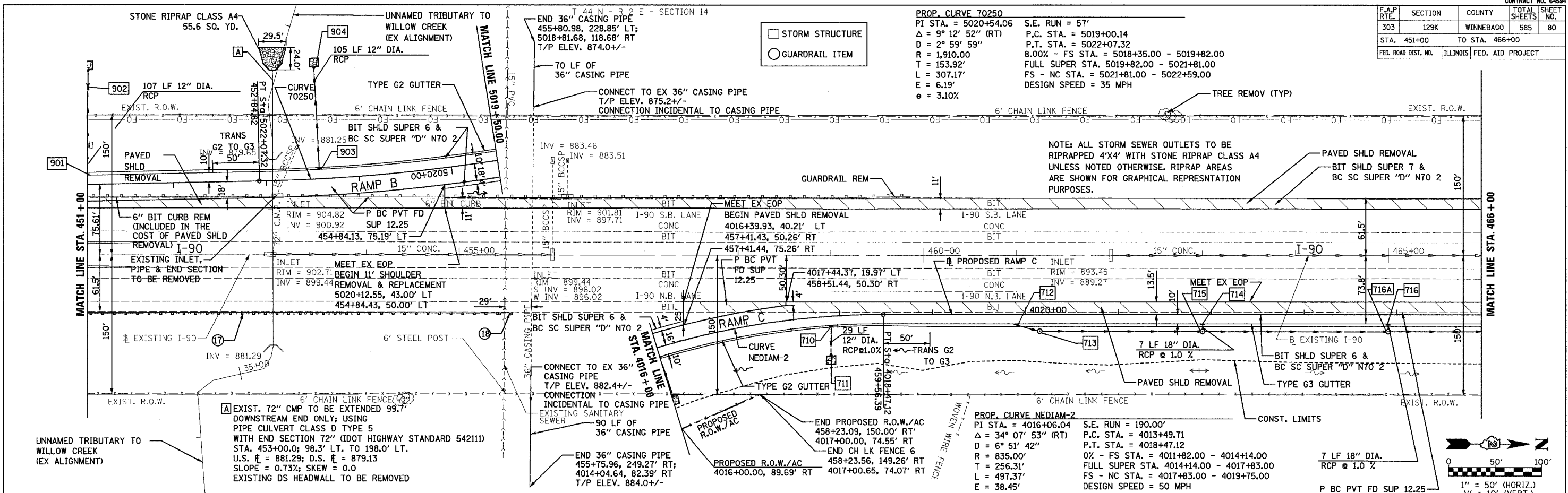


F.A.P. RTE.	SECTION	COUNTY	TOTAL SHEETS	SHEET NO.
303	129K	WINNEBAGO	585	80
STA. 451+00		TO STA. 466+00		
FED. ROAD DIST. NO.		ILLINOIS FED. AID PROJECT		



STRUCT NUMBER	STATION	OFFSET	RIM EL.	INVERT ELEV.	STRUCTURE TYPE
710	459+00.0	75.6' RT.	897.48	893.16	CATCH BASIN TYPE G-2 WITH TYPE G-2 F&G
711	459+00.0	105.4' RT.	---	892.87	SLOPED HEADWALL TYPE I - 12"
712	461+00.0	73.7' RT.	896.01	892.02 NE	CATCH BASIN TYPE G-3 WITH TYPE G-3 F&G
713	461+25.0	82.0' RT.	897.04	891.50 S, 891.40 N	MH 4'-DIA. TY 1 WITH FR & CO
714	463+00.0	73.7' RT.	893.93	890.92 F	CATCH BASIN TYPE G-3 WITH TYPE G-3 F&G
715	463+00.0	82.0' RT.	895.75	888.78 S, 888.68 N, 890.85 W	MH 4'-DIA. TY 1 WITH FR & CO
716	465+00.0	73.7' RT.	891.76	868.75 E	CATCH BASIN TYPE G-3 WITH TYPE G-3 F&G
716A	465+00.0	82.0' RT.	893.59	885.58 S, 885.48 N, 868.68 W	MH 4'-DIA. TY 1 WITH FR & CO
901	451+00.0	85.3' LT.	906.40	901.40	SLOPE DRAIN INLET
902	451+00.0	195.2' LT.	---	882.39	SLOPED HEADWALL TYPE I - 12"
903	453+50.0	91.4' LT.	903.29	898.29	SLOPE DRAIN INLET
904	453+50.0	198.3' LT.	---	879.70	SLOPED HEADWALL TYPE I - 12"