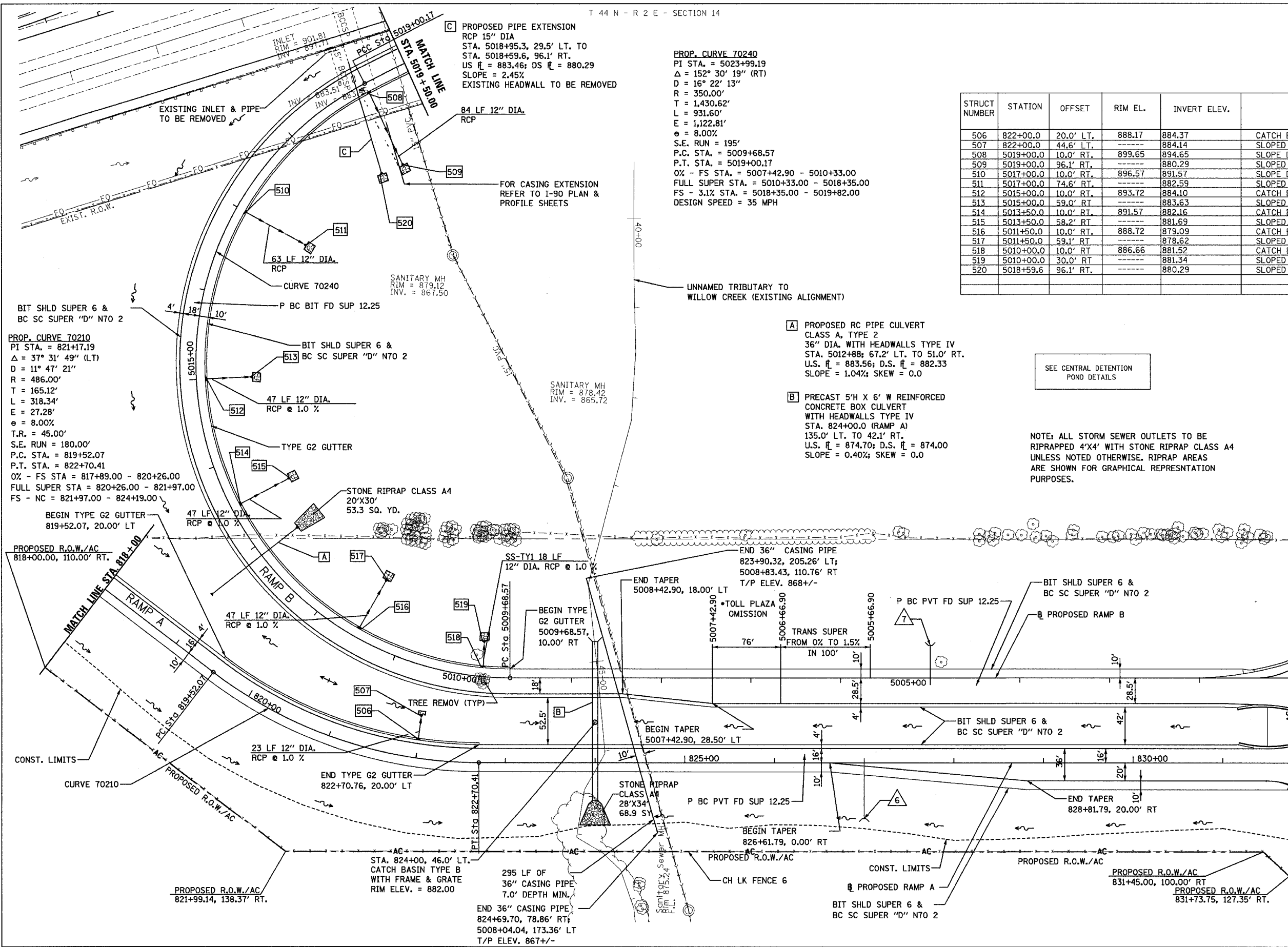


F.A.P. RTE.	SECTION	COUNTY	TOTAL SHEET NO.
303	129K	WINNEBAGO	585 84
STA. 818+00/5001+00 TO STA. 831+73.75/5019+50			
FED. ROAD DIST. NO. ILLINOIS			FED. AID PROJECT

T 44 N - R 2 E - SECTION 14



**PROP. CURVE 70240**  
 PI STA. = 5023+99.19  
 Δ = 152° 30' 19" (RT)  
 D = 16° 22' 13"  
 R = 350.00'  
 T = 1,430.62'  
 L = 931.60'  
 E = 1,122.81'  
 e = 8.00%  
 S.E. RUN = 195'  
 P.C. STA. = 5009+68.57  
 P.T. STA. = 5019+00.17  
 OX - FS STA. = 5007+42.90 - 5010+33.00  
 FULL SUPER STA. = 5010+33.00 - 5018+35.00  
 FS - 3.1% STA. = 5018+35.00 - 5019+82.00  
 DESIGN SPEED = 35 MPH

**PROP. CURVE 70210**  
 PI STA. = 821+17.19  
 Δ = 37° 31' 49" (LT)  
 D = 11° 47' 21"  
 R = 486.00'  
 T = 165.12'  
 L = 318.34'  
 E = 27.28'  
 e = 8.00%  
 T.R. = 45.00'  
 S.E. RUN = 180.00'  
 P.C. STA. = 819+52.07  
 P.T. STA. = 822+70.41  
 OX - FS STA = 817+89.00 - 820+26.00  
 FULL SUPER STA = 820+26.00 - 821+97.00  
 FS - NC = 821+97.00 - 824+19.00

STRUCT NUMBER	STATION	OFFSET	RIM EL.	INVERT ELEV.	STRUCTURE TYPE
506	822+00.0	20.0' LT.	888.17	884.37	CATCH BASIN TYPE G-2 WITH TYPE G-2 F&G
507	822+00.0	44.6' LT.	-----	884.14	SLOPED HEADWALL TYPE I - 12"
508	5019+00.0	10.0' RT.	899.65	894.65	SLOPE DRAIN INLET
509	5019+00.0	96.1' RT.	-----	880.29	SLOPED HEADWALL TYPE I - 12"
510	5017+00.0	10.0' RT.	896.57	891.57	SLOPE DRAIN INLET
511	5017+00.0	74.6' RT.	-----	882.59	SLOPED HEADWALL TYPE I - 12"
512	5015+00.0	10.0' RT.	893.72	884.10	CATCH BASIN TYPE G-2 WITH TYPE G-2 F&G
513	5015+00.0	59.0' RT.	-----	883.63	SLOPED HEADWALL TYPE I - 12"
514	5013+50.0	10.0' RT.	891.57	882.16	CATCH BASIN TYPE G-2 WITH TYPE G-2 F&G
515	5013+50.0	58.2' RT.	-----	881.69	SLOPED HEADWALL TYPE I - 12"
516	5011+50.0	10.0' RT.	888.72	879.09	CATCH BASIN TYPE G-2 WITH TYPE G-2 F&G
517	5011+50.0	59.1' RT.	-----	878.62	SLOPED HEADWALL TYPE I - 12"
518	5010+00.0	10.0' RT.	886.66	881.52	CATCH BASIN TYPE G-2 WITH TYPE G-2 F&G
519	5010+00.0	30.0' RT.	-----	881.34	SLOPED HEADWALL TYPE I - 12"
520	5018+59.6	96.1' RT.	-----	880.29	SLOPED HEADWALL TYPE I - 15"

- A** PROPOSED RC PIPE CULVERT CLASS A, TYPE 2 36" DIA. WITH HEADWALLS TYPE IV STA. 5012+88; 67.2' LT. TO 51.0' RT. U.S.  $\bar{x}$  = 883.56; D.S.  $\bar{x}$  = 882.33 SLOPE = 1.04%; SKEW = 0.0
- B** PRECAST 5'H X 6' W REINFORCED CONCRETE BOX CULVERT WITH HEADWALLS TYPE IV STA. 824+00.0 (RAMP A) 135.0' LT. TO 42.1' RT. U.S.  $\bar{x}$  = 874.70; D.S.  $\bar{x}$  = 874.00 SLOPE = 0.40%; SKEW = 0.0

SEE CENTRAL DETENTION POND DETAILS

NOTE: ALL STORM SEWER OUTLETS TO BE RIPRAPPED 4'X4' WITH STONE RIPRAP CLASS A4 UNLESS NOTED OTHERWISE. RIPRAP AREAS ARE SHOWN FOR GRAPHICAL REPRESENTATION PURPOSES.

MATCH LINE STA. 5001 + 00.00

MATCH LINE STA. 831 + 73.75

\*TOLL PLAZA AREA SHALL BE MASS GRADED WITH THE REST OF THE SITE, HOWEVER, ALL ABOVE GRADE ITEMS, PAVEMENT, SHOULDER, CURB, BARRIERS, CANOPIES, ETC SHALL BE BY OTHERS

- △ 65 LF OF PIPE UNDERDRAIN OUTLET WITH 6" TYPE III SLOPED HEADWALL 827+00.00, 62.83' RT
- △ 37 LF OF PIPE UNDERDRAIN OUTLET WITH 6" TYPE III SLOPED HEADWALL 5005+00.00, 36.08' RT

