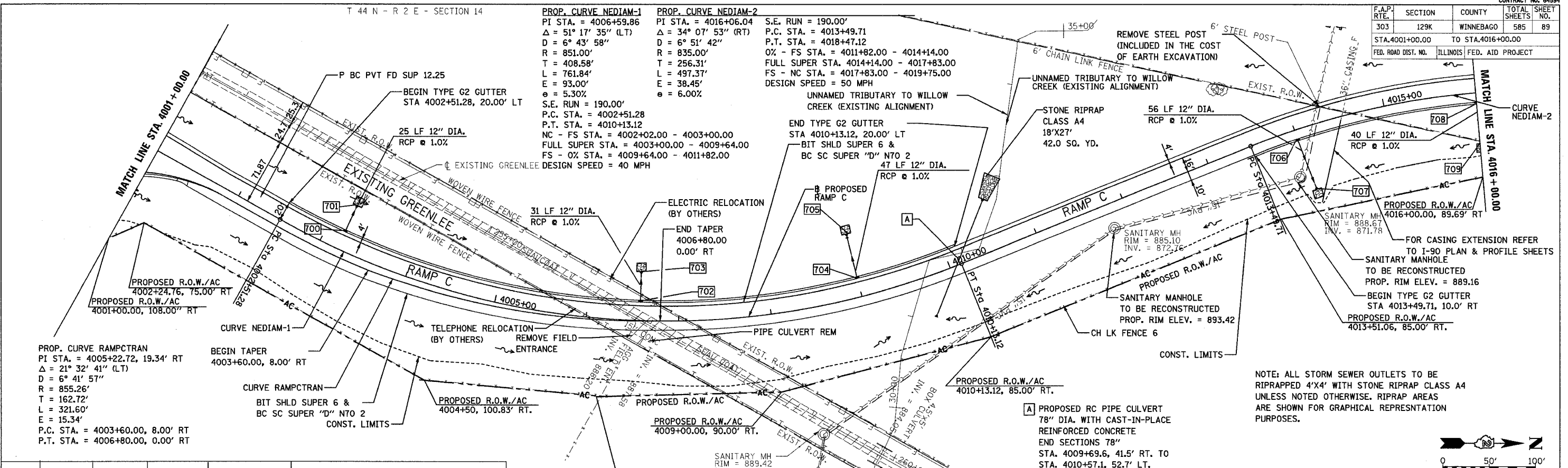


F.A.P. RTE.	SECTION	COUNTY	TOTAL SHEETS	SHEET NO.
303	129K	WINNEBAGO	585	89
STA. 4001+00.00		TO STA. 4016+00.00		
FED. ROAD DIST. NO.		ILLINOIS FED. AID PROJECT		

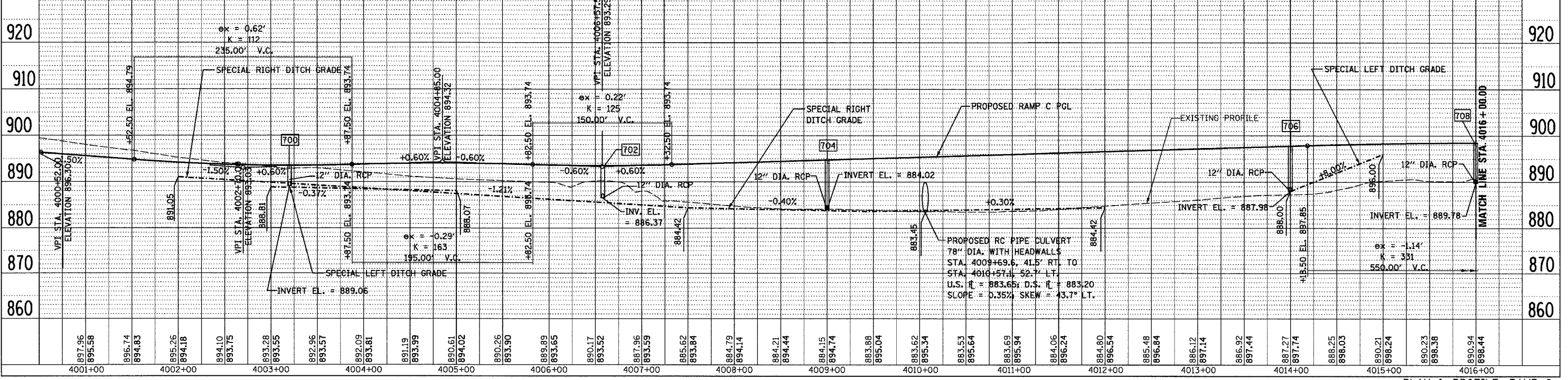
T 44 N - R 2 E - SECTION 14

**PROP. CURVE NEDIAM-1**  
 PI STA. = 4006+59.86  
 $\Delta = 51^\circ 17' 35''$  (LT)  
 $D = 6^\circ 43' 58''$   
 $R = 851.00'$   
 $T = 408.58'$   
 $L = 761.84'$   
 $E = 93.00'$   
 $\epsilon = 5.30\%$   
 S.E. RUN = 190.00'  
 P.C. STA. = 4002+51.28  
 P.T. STA. = 4010+13.12  
 NC - FS STA. = 4002+02.00 - 4003+00.00  
 FULL SUPER STA. = 4003+00.00 - 4009+64.00  
 FS - 0% STA. = 4009+64.00 - 4011+82.00  
 DESIGN SPEED = 40 MPH

**PROP. CURVE NEDIAM-2**  
 PI STA. = 4016+06.04  
 $\Delta = 34^\circ 07' 53''$  (RT)  
 $D = 6^\circ 51' 42''$   
 $R = 835.00'$   
 $T = 256.31'$   
 $L = 497.37'$   
 $E = 38.45'$   
 $\epsilon = 6.00\%$   
 S.E. RUN = 190.00'  
 P.C. STA. = 4013+49.71  
 P.T. STA. = 4018+47.12  
 0% - FS STA. = 4011+82.00 - 4014+14.00  
 FULL SUPER STA. = 4014+14.00 - 4017+83.00  
 FS - NC STA. = 4017+83.00 - 4019+75.00  
 DESIGN SPEED = 50 MPH



STRUCT NUMBER	STATION	OFFSET	RIM EL.	INVERT ELEV.	STRUCTURE TYPE
700	4003+20.0	20.0' LT.	892.47	889.06	CATCH BASIN TYPE G-2 WITH TYPE G-2 F&G
701	4003+20.0	47.4' LT.	888.81	888.81	SLOPED HEADWALL TYPE I - 12"
702	4006+58.0	20.0' LT.	892.47	886.78	CATCH BASIN TYPE G-2 WITH TYPE G-2 F&G
703	4006+58.0	52.9' LT.	886.47	886.47	SLOPED HEADWALL TYPE I - 12"
704	4009+00.0	20.0' LT.	893.68	884.02	CATCH BASIN TYPE G-2 WITH TYPE G-2 F&G
705	4009+00.0	69.1' LT.	883.55	883.55	SLOPED HEADWALL TYPE I - 12"
706	4014+00.0	10.0' RT.	897.18	887.98	CATCH BASIN TYPE G-2 WITH TYPE G-2 F&G
707	4014+00.0	67.6' RT.	887.42	887.42	SLOPED HEADWALL TYPE I - 12"
708	4016+00.0	10.0' RT.	897.84	889.78	CATCH BASIN TYPE G-2 WITH TYPE G-2 F&G
709	4016+00.0	52.4' RT.	889.38	889.38	SLOPED HEADWALL TYPE I - 12"



NOTE: ALL STORM SEWER OUTLETS TO BE RIPRAPPED 4'X4' WITH STONE RIPRAP CLASS A4 UNLESS NOTED OTHERWISE. RIPRAP AREAS ARE SHOWN FOR GRAPHICAL REPRESENTATION PURPOSES.

