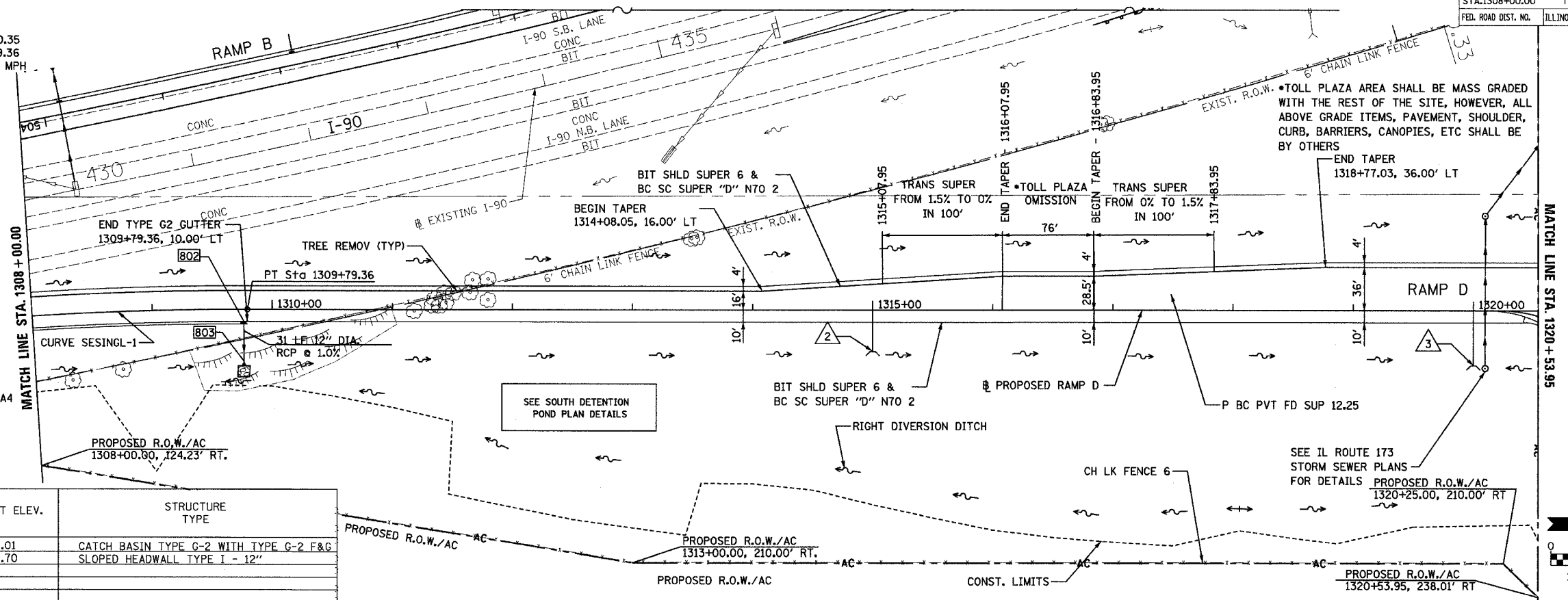


F.A.P. RTE.	SECTION	COUNTY	TOTAL SHEETS	SHEET NO.
303	129K	WINNEBAGO	585	91
STA. 1308+00.00		TO STA. 1320+53.95		
FED. ROAD DIST. NO.		ILLINOIS		FED. AID PROJECT

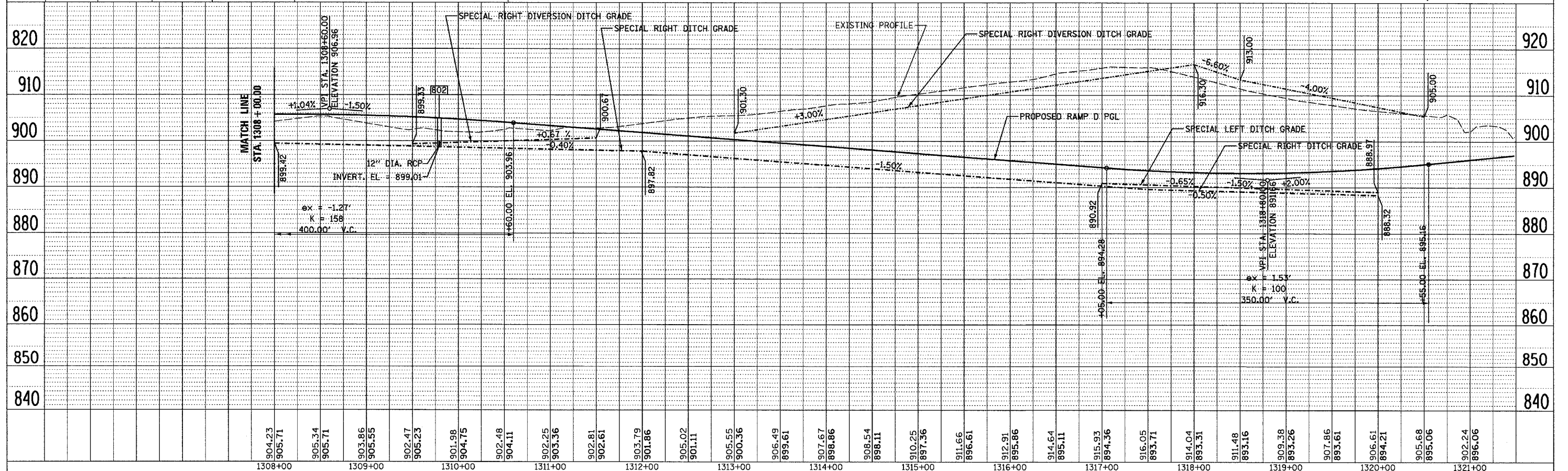
**PROP. CURVE SESINGL-1**  
 PI STA. = 1308+30.00 E = 4.00'  
 $\Delta = 6^\circ 07' 06''$  (RT)  $\theta = 3.60\%$   
 $D = 2^\circ 02' 47''$  S.E. RUN = 117.00'  
 $R = 2,800.00'$  P.C. STA. = 1306+80.35  
 $T = 149.64'$  P.T. STA. = 1309+79.36  
 $L = 299.00'$  DESIGN SPEED = 50 MPH  
 NC - FS STA. = 1306+02.00 - 1307+19.00  
 FULL SUPER STA. 1307+19.00 - 1309+40.00  
 FS - NC STA. = 1309+40.00 - 1310+57.00

- 2 35 LF OF PIPE UNDERDRAIN OUTLET WITH 6" TYPE III SLOPED HEADWALL 1315+00.00, 34.42' RT
- 3 48 LF OF PIPE UNDERDRAIN OUTLET WITH 6" TYPE III SLOPED HEADWALL 1320+00.00, 45.64' RT

NOTE: ALL STORM SEWER OUTLETS TO BE RIPRAPPED 4'X4' WITH STONE RIPRAP CLASS A4 UNLESS NOTED OTHERWISE. RIPRAP AREAS ARE SHOWN FOR GRAPHICAL REPRESENTATION PURPOSES.



STRUCT NUMBER	STATION	OFFSET	RIM EL.	INVERT ELEV.	STRUCTURE TYPE
802	1309+79.4	10.0' RT	904.55	899.01	CATCH BASIN TYPE G-2 WITH TYPE G-2 F&G
803	1309+79.4	42.6' RT	-----	898.70	SLOPED HEADWALL TYPE I - 12"



DATE	BY	REVISION

DATE	BY	REVISION