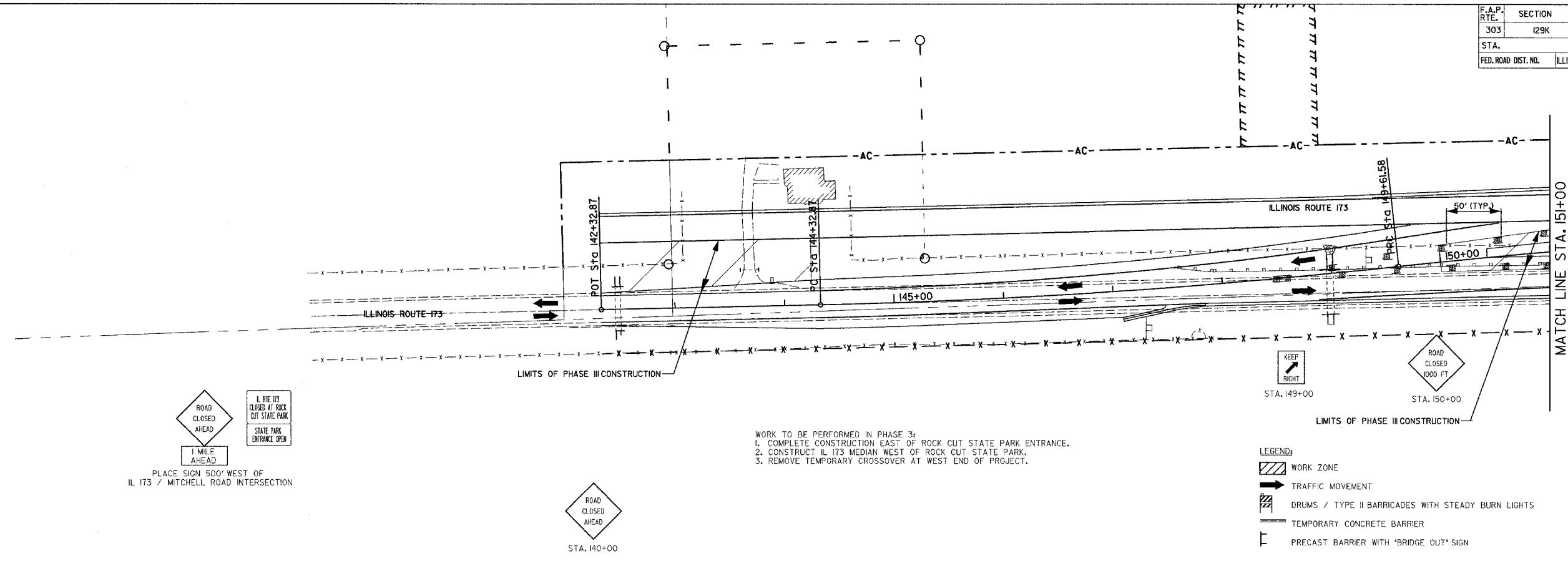
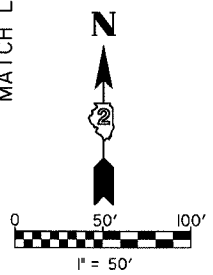
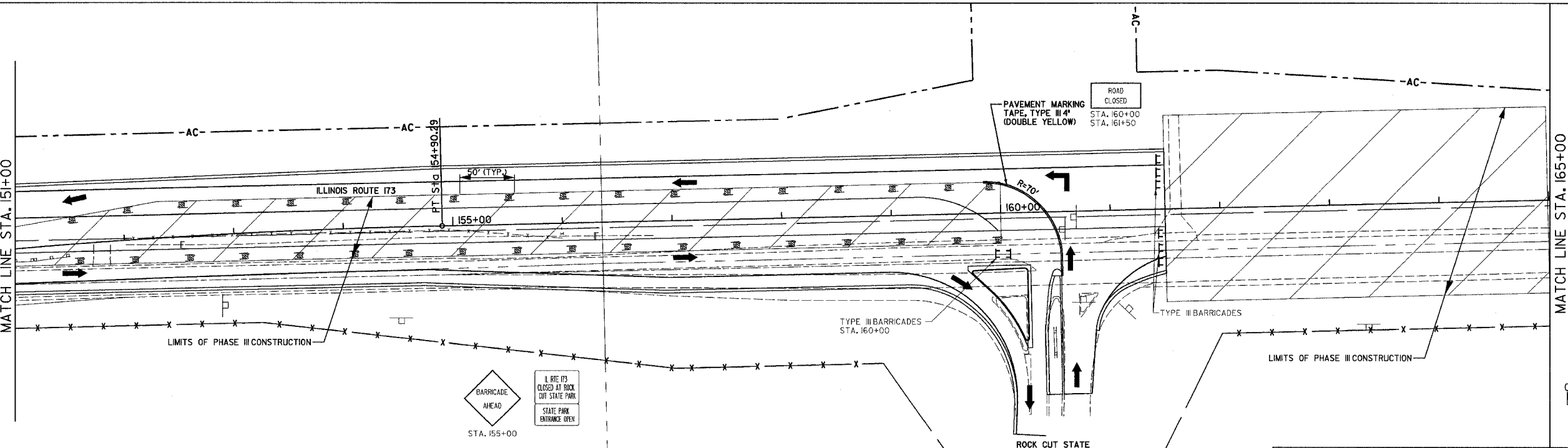


F.A.P. RTE.	SECTION	COUNTY	TOTAL SHEETS	SHEET NO.
303	129K	WINNEBAGO	585	104
STA.	TO STA.			
FED. ROAD DIST. NO.	ILLINOIS	FED. AID PROJECT		



WORK TO BE PERFORMED IN PHASE 3:  
 1. COMPLETE CONSTRUCTION EAST OF ROCK CUT STATE PARK ENTRANCE.  
 2. CONSTRUCT IL 173 MEDIAN WEST OF ROCK CUT STATE PARK.  
 3. REMOVE TEMPORARY CROSSOVER AT WEST END OF PROJECT.



REVISIONS	
NAME	DATE

ILLINOIS DEPARTMENT OF TRANSPORTATION

**MAINTENANCE OF TRAFFIC  
 IL 173  
 PHASE 3**

SCALE: VERT. N/A  
 HORIZ. 1" = 50'  
 DATE: SEPTEMBER 14, 2005  
 DRAWN BY: KRL  
 CHECKED BY: PDS