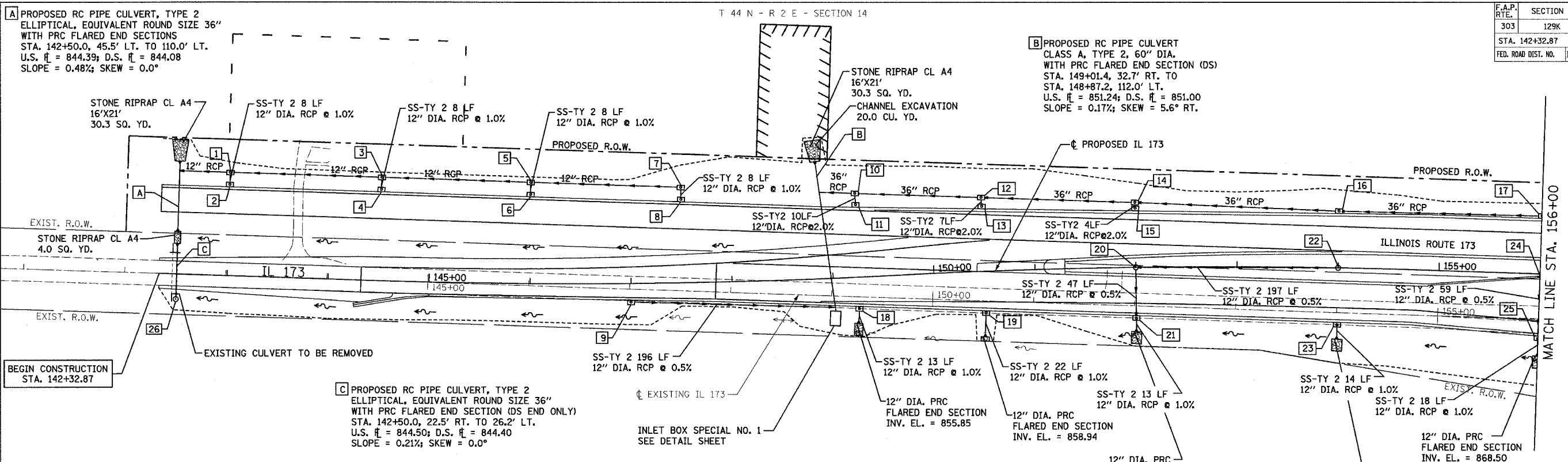


F.A.P. RTE.	SECTION	COUNTY	TOTAL SHEETS	SHEET NO.
303	129K	WINNEBAGO	585	117
STA. 142+32.87		TO STA. 156+00.00		
FED. ROAD DIST. NO.		ILLINOIS FED. AID PROJECT		

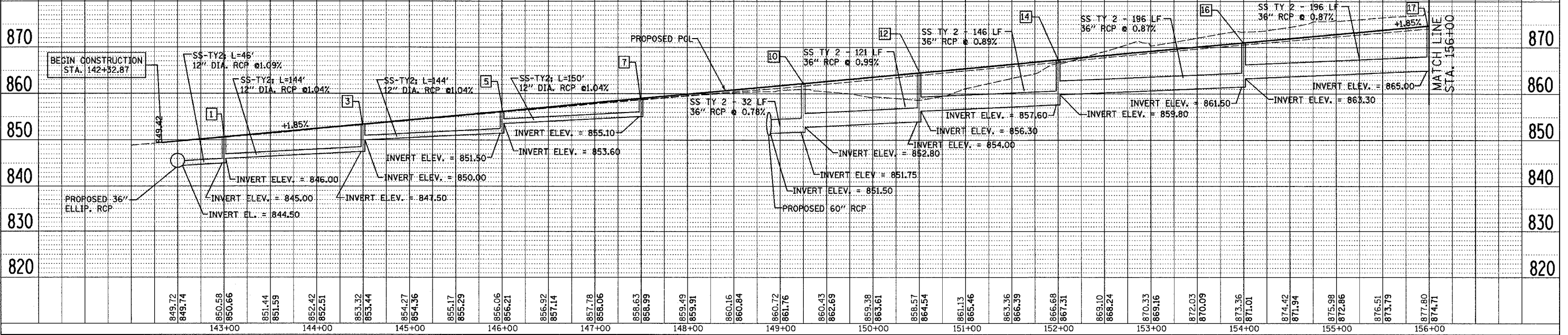
T 44 N - R 2 E - SECTION 14



- NOTES: 1. ALL STORM SEWER TO BE CLASS "A" UNLESS NOTED OTHERWISE.
 2. ALL STORM SEWER OUTLETS TO BE RIPRAPPED 4'X4' UNLESS NOTED OTHERWISE.
 3. STORM SEWER RIPRAP AREAS SHOWN FOR GRAPHICAL REPRESENTATION.
 4. WHERE APPLICABLE, ALL RIM ELEVATIONS REFERENCE TO THE EDGE OF PAVEMENT.

T 44 N - R 2 E - SECTION 23

STRUCT NUMBER	STATION	OFFSET	RIM ELEV.	INVERT ELEV.	STRUCTURE TYPE	STRUCT NUMBER	STATION	OFFSET	RIM ELEV.	INVERT ELEV.	STRUCTURE TYPE	STRUCT NUMBER	STATION	OFFSET	RIM ELEV.	INVERT ELEV.	STRUCTURE TYPE	
1	143+00.0	97.0' LT.	849.91	847.09 S; 846.00 E; 845.00 W	INLET SPECIAL NO. 3	11	149+25.0	65.7' LT.	861.67	857.96 N	INLET SPECIAL NO. 3	21	152+00.0	45.3' RT.	866.61	861.94 N; 861.84 S	INLET SPECIAL NO. 5	
2	143+00.0	85.0' LT.	850.21	847.17 N	INLET SPECIAL NO. 3	12	150+50.0	69.1' LT.	863.72	859.82 S; 856.30 E; 856.20 W	INLET SPECIAL NO. 3	22	154+00.0	0.0'	871.37	863.27 W	36" RCP CLASS A & MEDIAN INLET	
3	144+50.0	97.0' LT.	852.68	849.86 S; 850.00 E; 847.50 W	INLET SPECIAL NO. 3	13	150+50.0	58.9' LT.	863.91	859.96 N	INLET SPECIAL NO. 3	23	154+00.0	51.3' RT.	870.24	866.54 S	INLET SPECIAL NO. 5	
4	144+50.0	85.0' LT.	852.98	849.94 N	INLET SPECIAL NO. 3	14	152+00.0	60.1' LT.	866.51	862.88 S; 859.80 E; 859.70 W	INLET SPECIAL NO. 3	24	156+00.0	3.5' RT.	874.90	869.08 S	INLET SPECIAL NO. 2	
5	146+00.0	94.8' LT.	855.43	852.59 S; 853.60 E; 851.50 W	INLET SPECIAL NO. 3	15	152+00.0	53.0' LT.	866.64	862.96 N	INLET SPECIAL NO. 3	25	156+00.0	58.9' RT.	873.79	868.78 N; 868.68 S	INLET SPECIAL NO. 5	
6	146+00.0	82.8' LT.	855.71	852.67 N	INLET SPECIAL NO. 3	16	154+00.0	50.9' LT.	870.27	863.30 E; 863.20 W	INLET SPECIAL NO. 3	26	142+50.0	25.0' RT.	848.00	844.50	MH TY A 6' DIA. & 36" DIA. MEDIAN INLET W/ RISER	
7	147+50.0	89.0' LT.	858.18	855.34 S; 855.10 W	INLET SPECIAL NO. 3	17	156+00.0	52.0' LT.	873.93	866.80 E; 866.70 W	INLET SPECIAL NO. 3							
8	147+50.0	77.0' LT.	858.46	855.42 N	INLET SPECIAL NO. 3	18	149+25.0	26.6' RT.	861.68	855.98 S	INLET SPECIAL NO. 5							
9	147+00.0	14.1' RT.	857.78	852.48 E	INLET SPECIAL NO. 5	19	150+50.0	36.5' RT.	863.78	859.16 S	INLET SPECIAL NO. 5							
10	149+25.0	79.0' LT.	861.40	857.76 S; 852.80 E; 852.11 W	INLET SPECIAL NO. 3	20	152+00.0	0.0'	867.92	862.28 E; 862.18 S	36" RCP CLASS A & MEDIAN INLET							



DATE: _____
 BY: _____
 SURVEYED: _____
 PLAN: _____
 NOTE BOOK: _____
 ALIGNED: _____
 CHECKED: _____
 CLASS: _____
 FILE NAME: _____

DATE: _____
 BY: _____
 SURVEYED: _____
 PROFILE: _____
 GRADES CHECKED: _____
 INVERTS CHECKED: _____
 STRUCTURE NOTATIONS CHECKED: _____