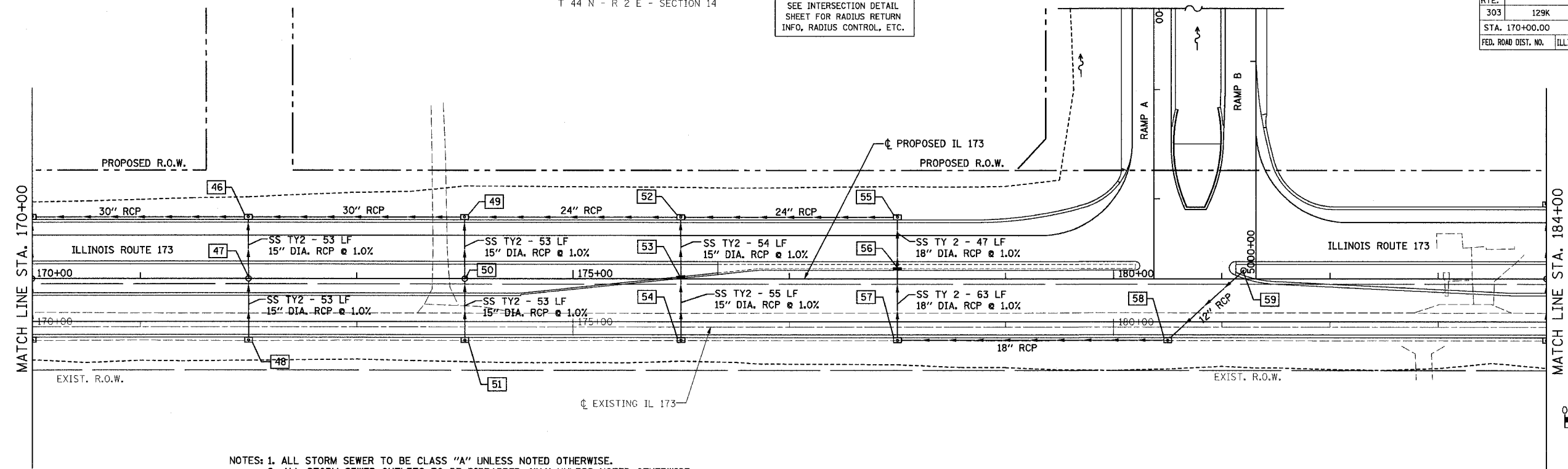


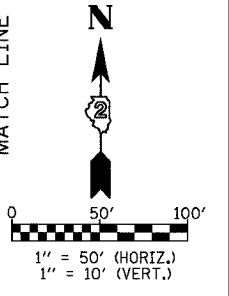
F.A.P. RTE.	SECTION	COUNTY	TOTAL SHEETS	SHEET NO.
303	129K	WINNEBAGO	585	119
STA. 170+00.00		TO STA. 184+00.00		
FED. ROAD DIST. NO.		ILLINOIS FED. AID PROJECT		

T 44 N - R 2 E - SECTION 14

SEE INTERSECTION DETAIL SHEET FOR RADIUS RETURN INFO, RADIUS CONTROL, ETC.



- NOTES: 1. ALL STORM SEWER TO BE CLASS "A" UNLESS NOTED OTHERWISE.
 2. ALL STORM SEWER OUTLETS TO BE RIPRAPPED 4'X4' UNLESS NOTED OTHERWISE.
 3. STORM SEWER RIPRAP AREAS SHOWN FOR GRAPHICAL REPRESENTATION.
 4. WHERE APPLICABLE, ALL RIM ELEVATIONS REFERENCE TO THE EDGE OF PAVEMENT.



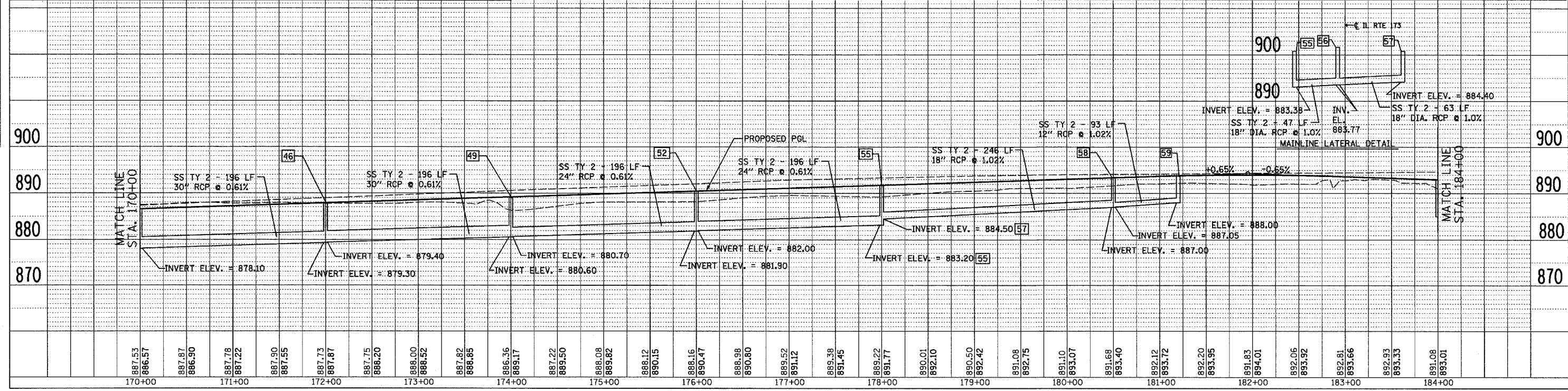
PLAN

DATE	BY

REVISIONS

NO.	DATE	DESCRIPTION

STRUCT. NUMBER	STATION	OFFSET	RIM ELEV.	INVERT ELEV.	STRUCTURE TYPE	STRUCT. NUMBER	STATION	OFFSET	RIM ELEV.	INVERT ELEV.	STRUCTURE TYPE	STRUCT. NUMBER	STATION	OFFSET	RIM ELEV.	INVERT ELEV.	STRUCTURE TYPE
46	172+00.0	52.0' LT.	887.09	880.86 S; 879.40 E; 879.30 W	INLET SPECIAL NO. 3	56	178+00.0	8.1' LT.	891.89	883.77 S; 883.77 N	INLET SPECIAL NO. 2						
47	172+00.0	0.0'	889.20	881.49 S; 881.39 N	36" RCP CLASS A & MEDIAN INLET	57	178+00.0	52.0' RT.	891.00	884.50 E; 884.40 N	INLET SPECIAL NO. 5						
48	172+00.0	52.0' RT.	887.09	882.02 N	INLET SPECIAL NO. 5	58	180+50.0	52.0' RT.	892.62	887.07 NE; 887.00 W	INLET SPECIAL NO. 5						
49	174+00.0	52.0' LT.	888.39	881.86 S; 880.70 E; 880.60 W	INLET SPECIAL NO. 3	59	181+20.2	7.7' LT.	894.55	888.00 SW	24" RCP CLASS A & MEDIAN INLET						
50	174+00.0	0.0'	889.50	882.49 S; 882.39 N	36" RCP CLASS A & MEDIAN INLET												
51	174+00.0	52.0' RT.	888.39	883.02 N	INLET SPECIAL NO. 5												
52	176+00.0	52.0' LT.	889.69	882.86 S; 882.00 E; 881.90 W	INLET SPECIAL NO. 3												
53	176+00.0	0.5' LT.	890.71	883.50 S; 883.40 N	INLET SPECIAL NO. 2												
54	176+00.0	52.0' RT.	889.69	884.05 N	INLET SPECIAL NO. 5												
55	178+00.0	52.0' LT.	891.00	883.30 S; 883.20 W	INLET SPECIAL NO. 3												



PROFILE

DATE	BY

REVISIONS

NO.	DATE	DESCRIPTION