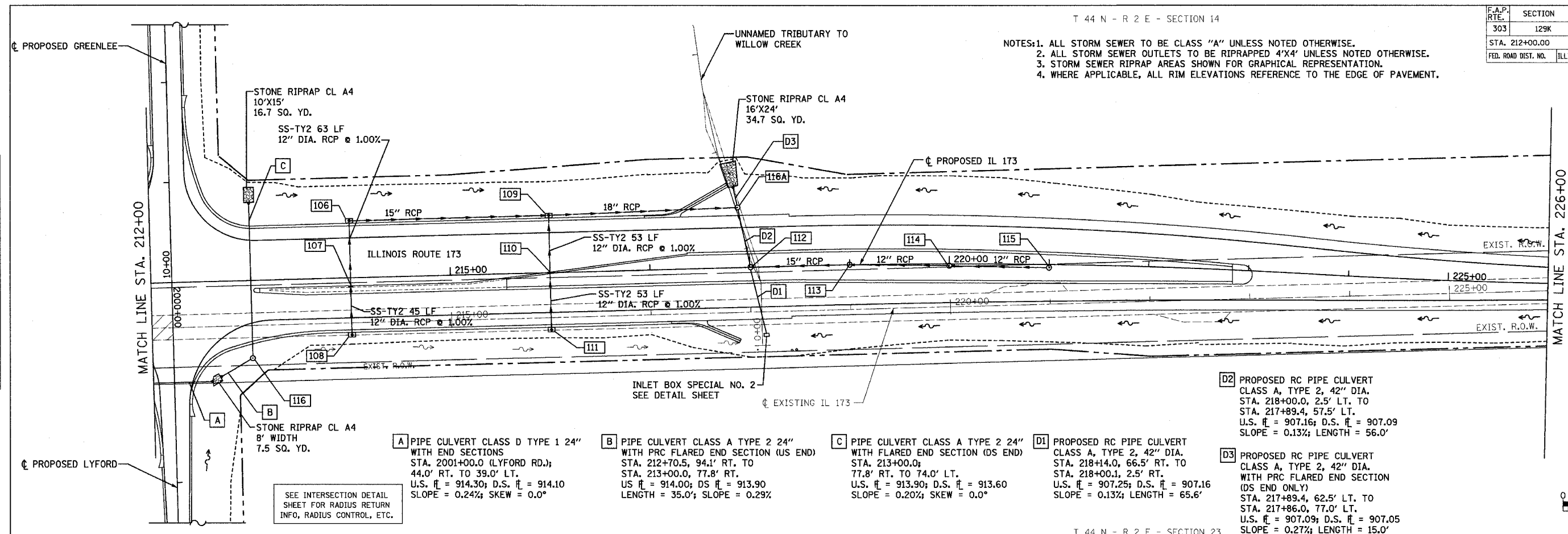


F.A.P. RTE.	SECTION	COUNTY	TOTAL SHEETS	SHEET NO.
303	129K	WINNEBAGO	585	122
STA. 212+00.00		TO STA. 226+00.00		
FED. ROAD DIST. NO.		ILLINOIS		FED. AID PROJECT

T 44 N - R 2 E - SECTION 14

- NOTES: 1. ALL STORM SEWER TO BE CLASS "A" UNLESS NOTED OTHERWISE.
 2. ALL STORM SEWER OUTLETS TO BE RIPRAPPED 4'X4' UNLESS NOTED OTHERWISE.
 3. STORM SEWER RIPRAP AREAS SHOWN FOR GRAPHICAL REPRESENTATION.
 4. WHERE APPLICABLE, ALL RIM ELEVATIONS REFERENCE TO THE EDGE OF PAVEMENT.



SEE INTERSECTION DETAIL SHEET FOR RADIUS RETURN INFO, RADIUS CONTROL, ETC.

A PIPE CULVERT CLASS D TYPE 1 24" WITH END SECTIONS STA. 2001+00.0 (LYFORD RD.); 44.0' RT. TO 39.0' LT. U.S. \bar{x} = 914.30; D.S. \bar{x} = 914.10 SLOPE = 0.24%; SKEW = 0.0°

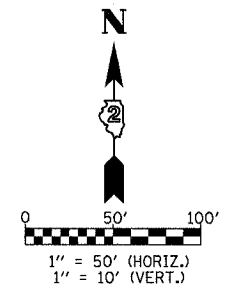
B PIPE CULVERT CLASS A TYPE 2 24" WITH PRC FLARED END SECTION (US END) STA. 212+70.5, 94.1' RT. TO STA. 213+00.0, 77.8' RT. US \bar{x} = 914.00; DS \bar{x} = 913.90 LENGTH = 35.0'; SLOPE = 0.29%

C PIPE CULVERT CLASS A TYPE 2 24" WITH FLARED END SECTION (DS END) STA. 213+00.0; 77.8' RT. TO 74.0' LT. U.S. \bar{x} = 913.90; D.S. \bar{x} = 913.60 SLOPE = 0.20%; SKEW = 0.0°

D1 PROPOSED RC PIPE CULVERT CLASS A, TYPE 2, 42" DIA. STA. 218+00.0; 66.5' RT. TO STA. 218+00.1, 2.5' RT. U.S. \bar{x} = 907.25; D.S. \bar{x} = 907.16 SLOPE = 0.13%; LENGTH = 65.6'

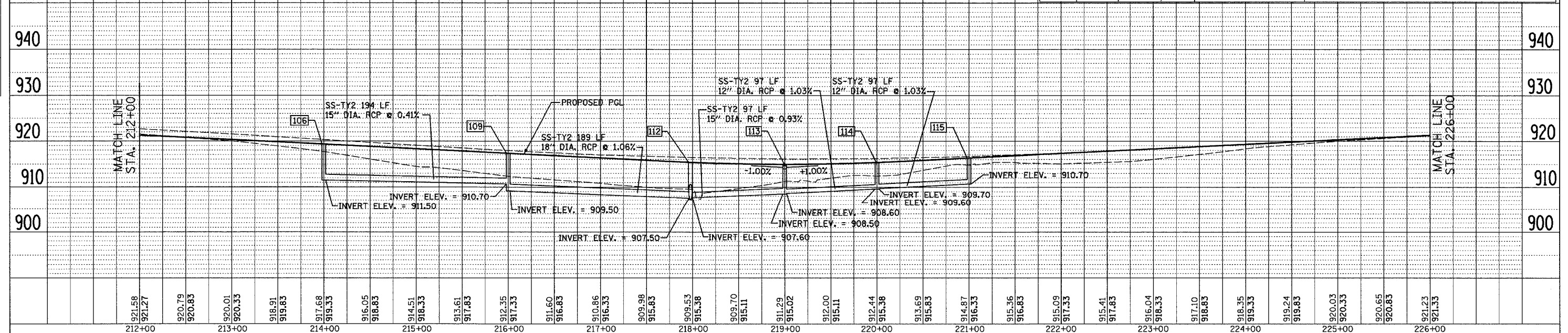
D2 PROPOSED RC PIPE CULVERT CLASS A, TYPE 2, 42" DIA. STA. 218+00.0, 2.5' LT. TO STA. 217+89.4, 57.5' LT. U.S. \bar{x} = 907.16; D.S. \bar{x} = 907.09 SLOPE = 0.13%; LENGTH = 56.0'

D3 PROPOSED RC PIPE CULVERT CLASS A, TYPE 2, 42" DIA. WITH PRC FLARED END SECTION (DS END ONLY) STA. 217+89.4, 62.5' LT. TO STA. 217+86.0, 77.0' LT. U.S. \bar{x} = 907.09; D.S. \bar{x} = 907.05 SLOPE = 0.27%; LENGTH = 15.0'



T 44 N - R 2 E - SECTION 23

STRUCT. NUMBER	STATION	OFFSET	RIM ELEV.	INVERT ELEV.	STRUCTURE TYPE
106	214+00.0	52.0' LT.	918.55	911.50 E; 911.86 S	INLET SPECIAL NO. 5
107	214+00.0	8.0' RT.	919.45	912.49 N; 912.59 S	INLET SPECIAL NO. 2
108	214+00.0	52.0' RT.	918.55	913.04 N	INLET SPECIAL NO. 5
109	216+00.0	52.0' LT.	916.55	909.50 E; 910.70 W; 909.86 S	INLET SPECIAL NO. 5
110	216+00.0	0.6' LT.	917.56	910.39 N; 910.49 S	INLET SPECIAL NO. 2
111	216+00.0	52.0' RT.	916.55	911.02 N	INLET SPECIAL NO. 5
112	218+00.8	0.0'	915.71	907.50 W	MH TY A 5'-DIA. W/ TY 1 F & OL
113	219+00.0	0.0'	915.32	908.50 W; 908.60 E	36" RCP CLASS A & MEDIAN INLET
114	220+00.0	1.8' RT.	915.67	909.60 W; 909.70 E	36" RCP CLASS A & MEDIAN INLET
115	221+00.0	3.1' RT.	916.62	910.70 W	36" RCP CLASS A & MEDIAN INLET



PLAN	SURVEYED	BY	DATE
	GRADES CHECKED		
	ALIGNED		
	CHECKED		
	NO. _____		

PROFILE	SURVEYED	BY	DATE
	GRADES CHECKED		
	ALIGNED		
	CHECKED		
	NO. _____		