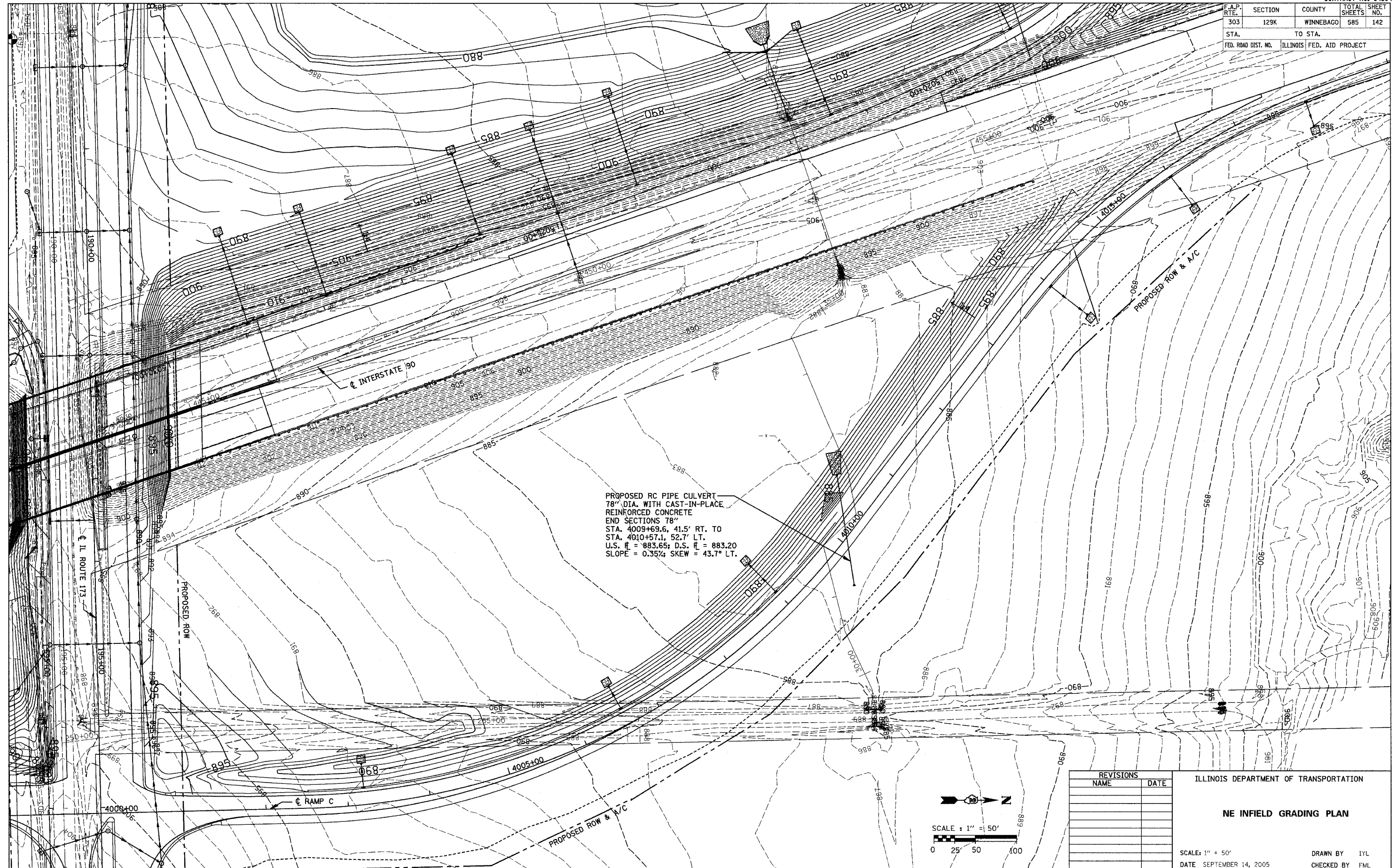
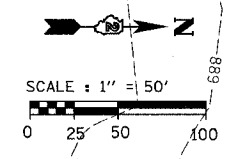


F.A.P. RTE.	SECTION	COUNTY	TOTAL SHEETS	SHEET NO.
303	129K	WINNEBAGO	585	142
STA.		TO STA.		
FED. ROAD DIST. NO.		ILLINOIS FED. AID PROJECT		



PROPOSED RC PIPE CULVERT
 78" DIA. WITH CAST-IN-PLACE
 REINFORCED CONCRETE
 END SECTIONS 78"
 STA. 4009+69.6, 41.5' RT. TO
 STA. 4010+57.1, 52.7' LT.
 U.S. \bar{x} = 883.65; D.S. \bar{x} = 883.20
 SLOPE = 0.35%; SKEW = 43.7° LT.



REVISIONS	
NAME	DATE

ILLINOIS DEPARTMENT OF TRANSPORTATION

NE INFIELD GRADING PLAN

SCALE: 1" = 50'
 DATE: SEPTEMBER 14, 2005

DRAWN BY: IYL
 CHECKED BY: FML