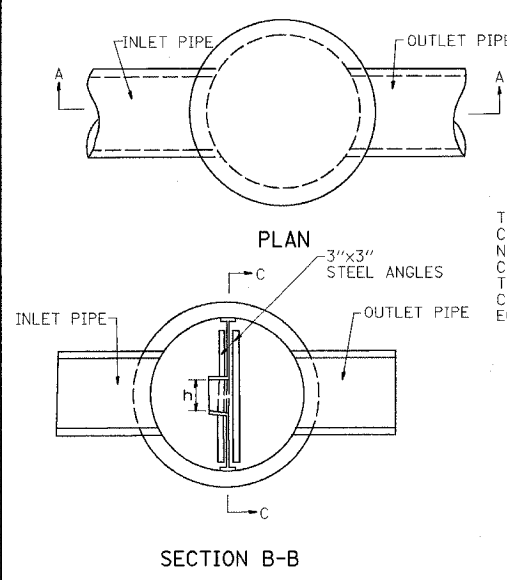
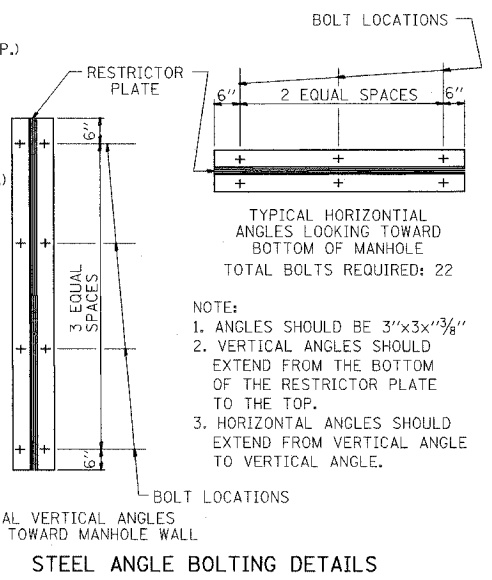
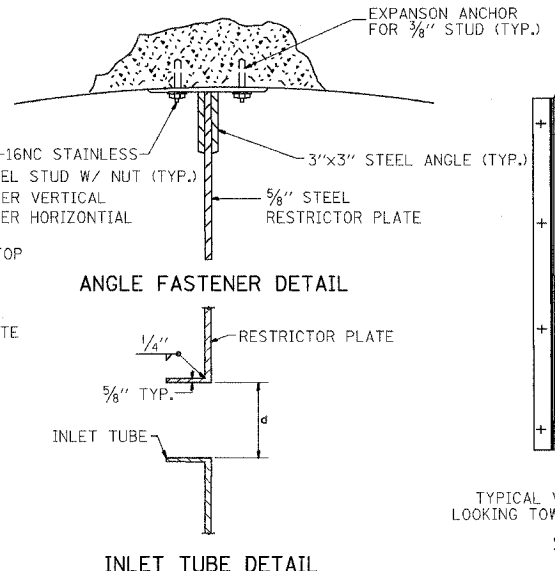
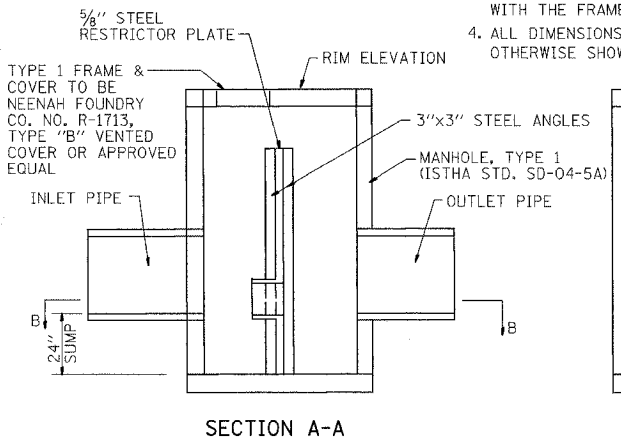


F.A.P. RTE.	SECTION	COUNTY	TOTAL SHEETS	SHEET NO.
303	129K	WINNEBAGO	585	144
STA.		TO STA.		
FED. ROAD DIST. NO.		ILLINOIS FED. AID PROJECT		

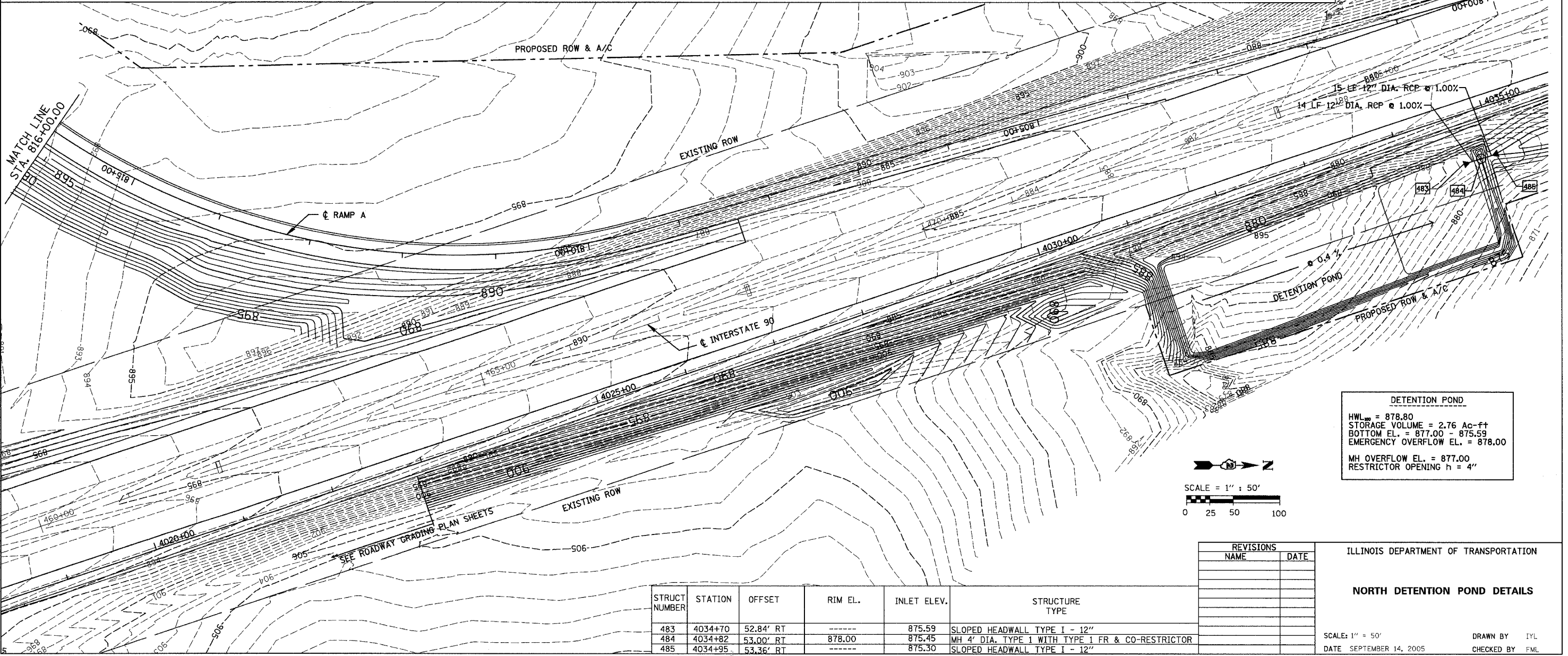


RESTRICTOR MANHOLE DETAILS

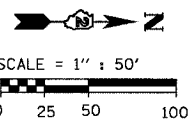
- NOTES:
1. ALL STEEL ANGLES AND PLATES TO BE GALVANIZED AFTER FABRICATION.
 2. ALL RESTRICTOR PLATES, ANGLES AND HARDWARE TO BE INCLUDED IN THE COST OF THE MANHOLE.
 3. BASIS OF PAYMENT: MANHOLE, TYPE 1 RESTRICTOR PLATE WITH THE FRAME AND GRATE AND DIAMETER SPECIFIED.
 4. ALL DIMENSIONS ARE IN MILLIMETERS (INCHES) UNLESS OTHERWISE SHOWN.



- NOTE:
1. ANGLES SHOULD BE 3"x3"x3/8"
 2. VERTICAL ANGLES SHOULD EXTEND FROM THE BOTTOM OF THE RESTRICTOR PLATE TO THE TOP.
 3. HORIZONTAL ANGLES SHOULD EXTEND FROM VERTICAL ANGLE TO VERTICAL ANGLE.



DETENTION POND
 HWL = 878.80
 STORAGE VOLUME = 2.76 Ac-ft
 BOTTOM EL. = 877.00 - 875.59
 EMERGENCY OVERFLOW EL. = 878.00
 MH OVERFLOW EL. = 877.00
 RESTRICTOR OPENING h = 4"



STRUCT NUMBER	STATION	OFFSET	RIM EL.	INLET ELEV.	STRUCTURE TYPE
483	4034+70	52.84' RT	-----	875.59	SLOPED HEADWALL TYPE I - 12"
484	4034+82	53.00' RT	878.00	875.45	MH 4' DIA. TYPE 1 WITH TYPE 1 FR & CO-RESTRICTOR
485	4034+95	53.36' RT	-----	875.30	SLOPED HEADWALL TYPE I - 12"

REVISIONS	
NAME	DATE

ILLINOIS DEPARTMENT OF TRANSPORTATION
NORTH DETENTION POND DETAILS
 SCALE: 1" = 50'
 DATE: SEPTEMBER 14, 2005
 DRAWN BY: IYL
 CHECKED BY: FML