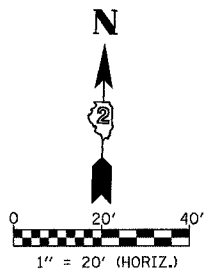
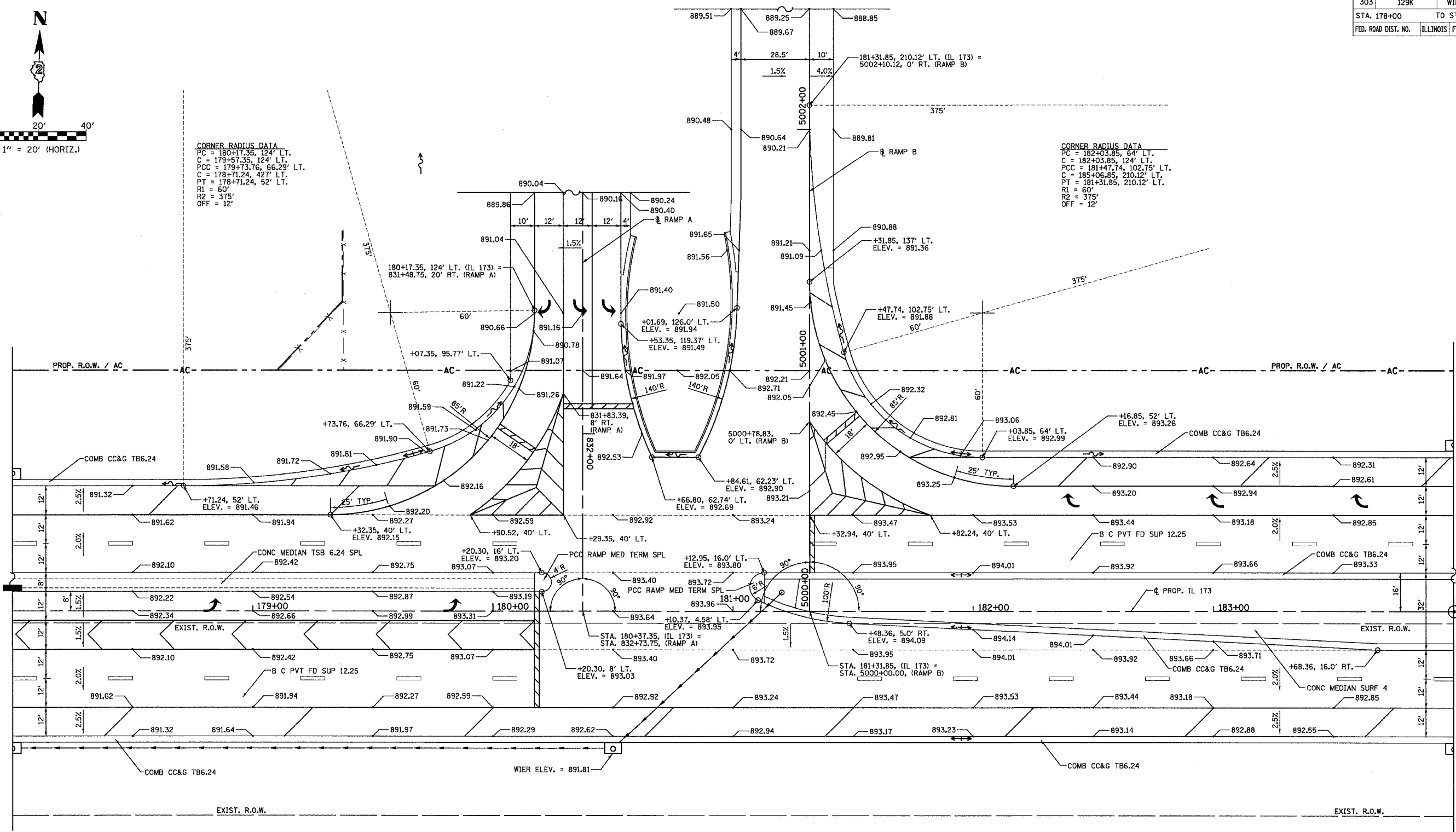


F.A.P. RTE.	SECTION	COUNTY	TOTAL SHEETS	SHEET NO.
303	129K	WINNEBAGO	585	147
STA. 178+00		TO STA. 184+00		
FED. ROAD DIST. NO.		ILLINOIS FED. AID PROJECT		



CORNER RADIUS DATA
 PC = 180+17.35, 124' LT.
 C = 179+57.35, 124' LT.
 PCC = 179+73.76, 66.29' LT.
 C = 178+71.24, 42' LT.
 PT = 178+71.24, 52' LT.
 R1 = 60'
 R2 = 375'
 OFF = 12'

CORNER RADIUS DATA
 PC = 182+03.85, 64' LT.
 C = 182+03.85, 124' LT.
 PCC = 181+47.74, 102.75' LT.
 C = 185+06.85, 210.12' LT.
 PT = 181+31.85, 210.12' LT.
 R1 = 60'
 R2 = 375'
 OFF = 12'



REVISIONS	
NAME	DATE

ILLINOIS DEPARTMENT OF TRANSPORTATION

RAMPS A & B
INTERSECTION DETAIL
STA. 178+00 TO STA. 184+00

VERT. SCALE: DATE: 9/14/05
 DRAWN BY: JDU
 CHECKED BY: BJF/BSL