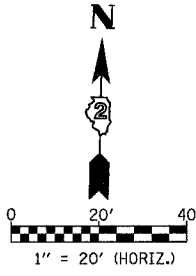


F.A.P. RTE.	SECTION	COUNTY	TOTAL SHEETS	SHEET NO.
303	129K	WINNEBAGO	585	149
STA. 209+00		TO STA. 215+00		
FED. ROAD DIST. NO.		ILLINOIS FED. AID PROJECT		

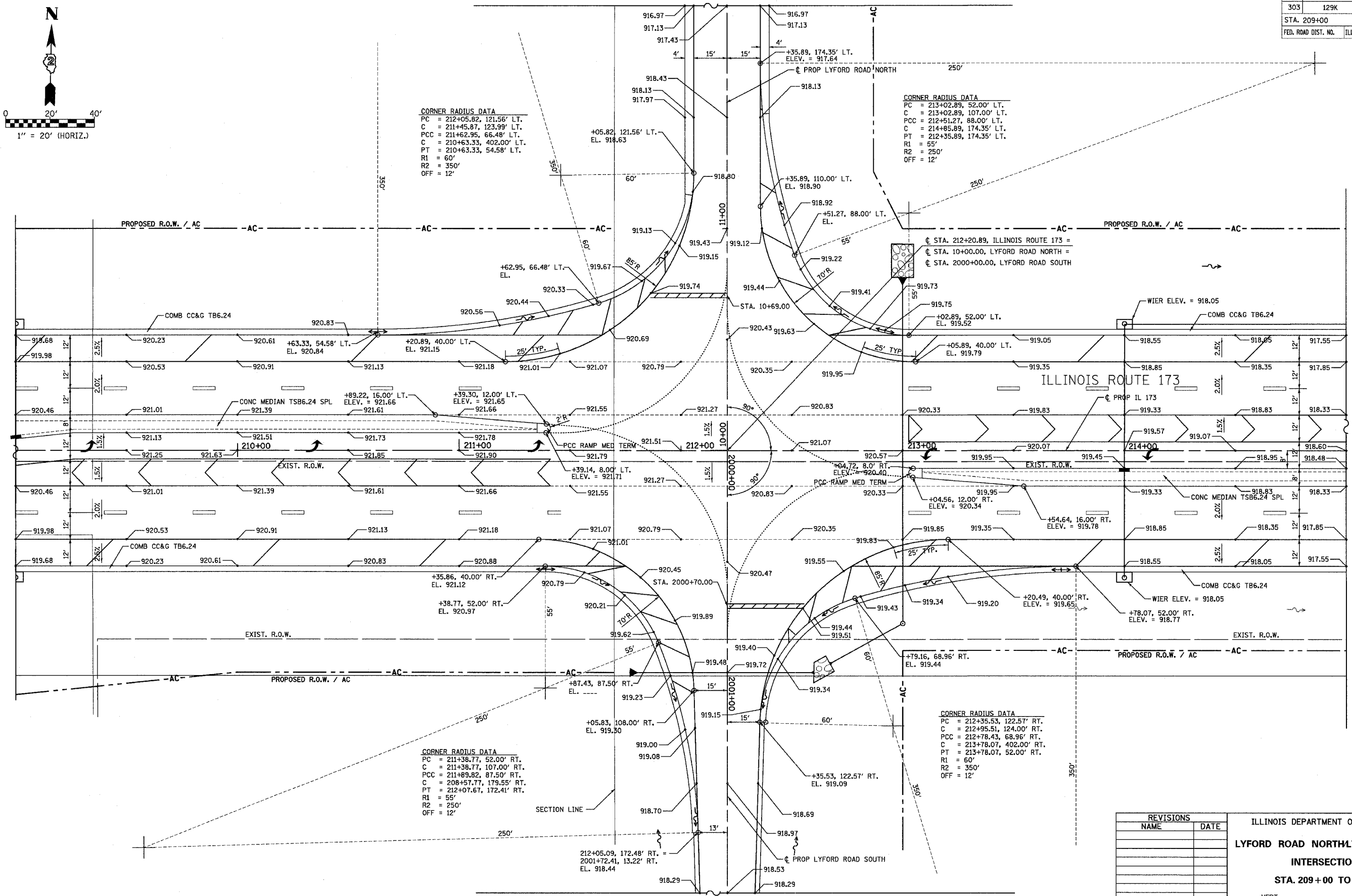


**CORNER RADIUS DATA**  
 PC = 212+05.92, 121.56' LT.  
 C = 211+45.97, 123.99' LT.  
 PCC = 211+62.95, 66.48' LT.  
 C = 210+63.33, 402.00' LT.  
 PT = 210+63.33, 54.58' LT.  
 R1 = 60'  
 R2 = 350'  
 OFF = 12'

**CORNER RADIUS DATA**  
 PC = 213+02.89, 52.00' LT.  
 C = 213+02.89, 107.00' LT.  
 PCC = 212+51.27, 88.00' LT.  
 C = 214+85.89, 174.35' LT.  
 PT = 212+35.89, 174.35' LT.  
 R1 = 55'  
 R2 = 250'  
 OFF = 12'

**CORNER RADIUS DATA**  
 PC = 211+38.77, 52.00' RT.  
 C = 211+38.77, 107.00' RT.  
 PCC = 211+89.82, 87.50' RT.  
 C = 208+57.77, 179.55' RT.  
 PT = 212+07.67, 172.41' RT.  
 R1 = 55'  
 R2 = 250'  
 OFF = 12'

**CORNER RADIUS DATA**  
 PC = 212+35.53, 122.57' RT.  
 C = 212+95.51, 124.00' RT.  
 PCC = 212+78.43, 68.96' RT.  
 C = 213+78.07, 402.00' RT.  
 PT = 213+78.07, 52.00' RT.  
 R1 = 60'  
 R2 = 350'  
 OFF = 12'



REVISIONS	
NAME	DATE

ILLINOIS DEPARTMENT OF TRANSPORTATION  
 LYFORD ROAD NORTH/LYFORD ROAD SOUTH  
 INTERSECTION DETAIL  
 STA. 209+00 TO STA. 215+00  
 VERT. SCALE: 1" = 20'  
 DATE: 9/14/05  
 DRAWN BY: JDU  
 CHECKED BY: BJF/BSL