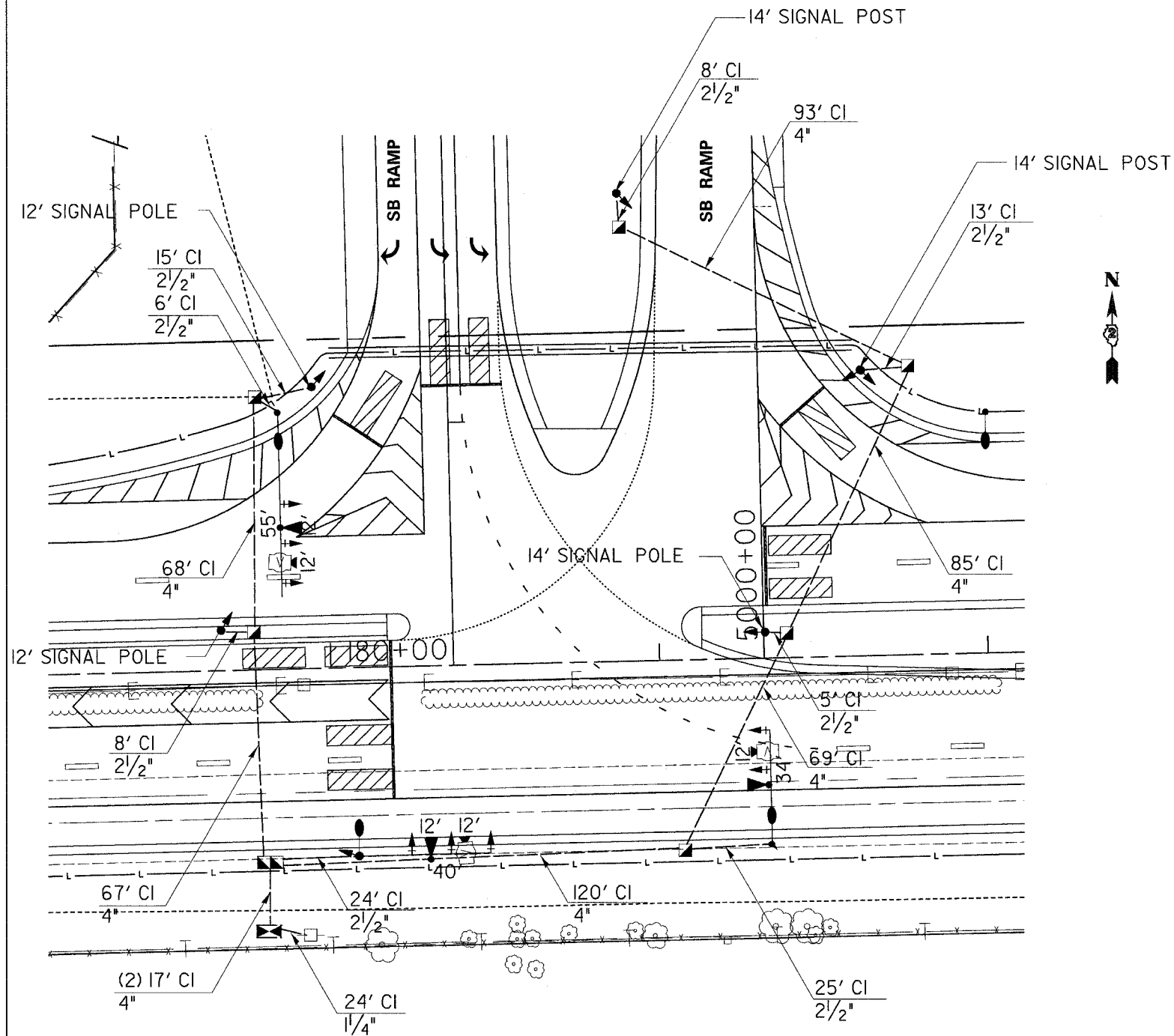


F.A.I. RTE.	SECTION	COUNTY	TOTAL SHEETS	SHEET NO.
*	I29 K	WINNEBAGO	585	158
STA.		TO STA.		
FED. ROAD DIST. NO.	ILLINOIS	FED. AID PROJECT		
190/ IL 173				



LEGEND

- CONTROLLER
- ALUMINUM MAST ARM ASSEMBLY AND POLE
- STEEL MAST ARM ASSEMBLY AND POLE
- SIGNAL HEAD AND POST
- SIGNAL HEAD WITH BACKPLATE
- PEDESTRIAN HEAD
- PEDESTRIAN PUSHBUTTON
- HANDHOLE
- JUNCTION BOX
- HEAVY-DUTY HANDHOLE
- DOUBLE HANDHOLE
- LUMINAIRE
- CONDUIT INSTALLED, NON-METALLIC
UPPER NUMERAL INDICATES LENGTH
CI INDICATES CONDUIT INSTALLED, NON -METALLIC
WHETHER PUSHED OR TRENCHED
LOWER NUMERAL INDICATES SIZE OF CONDUIT
- MINIMUM VIDEO DETECTION ZONES

PLOT DATE = #DATE#
 FILE NAME = #FILE#
 USER NAME = #USER#

REVISIONS	
NAME	DATE

ILLINOIS DEPARTMENT OF TRANSPORTATION

SCALE: VERT. _____
 HORIZ. _____

DATE _____ DRAWN BY _____
 CHECKED BY _____

TRAFFIC SIGNALS