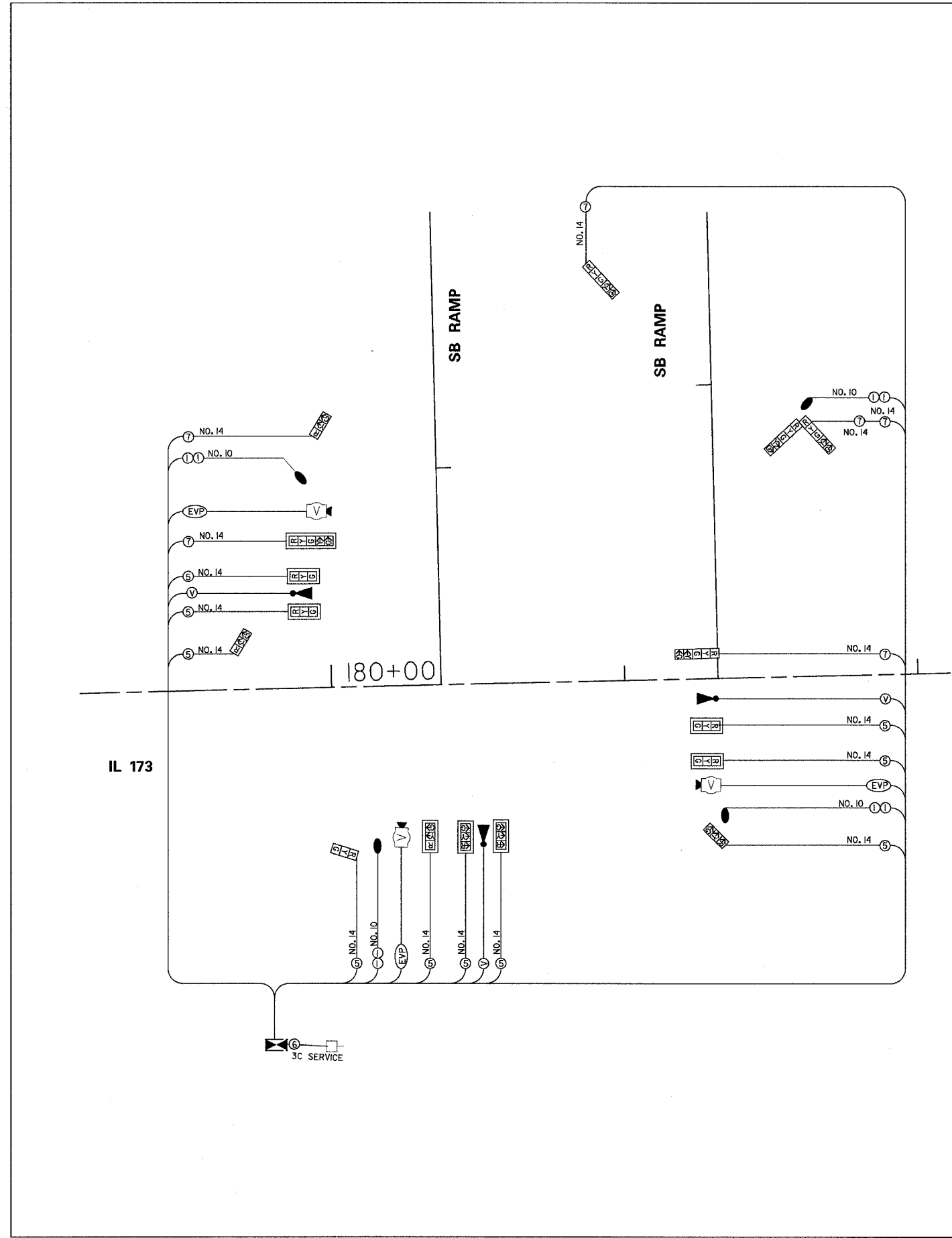
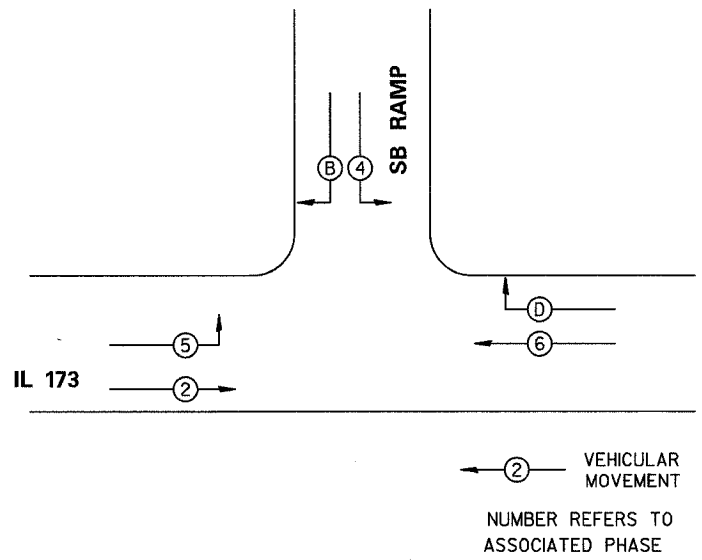


F.A. RTE.	SECTION	COUNTY	TOTAL SHEETS	SHEET NO.
#	I29 K	WINNEBAGO	585	159
STA.		TO STA.		
FED. ROAD DIST. NO.	ILLINOIS	FED. AID PROJECT		
190/ IL 173				



PHASE DESIGNATION DIAGRAM



SOUTHBOUND RAMP E-W MAJOR ROADWAY DETECTION ZONES		
ZONE	PHASE No.	DIRECTION
A	4	SB PRESENT
B	8	SB RIGHT TURN
C	6	WB PRESENT
D	D	WB RIGHT TURN
E	2	EB PRESENT
F	5	EB LEFT TURN

- LEGEND**
- (2) INDICATES NUMBER OF NEW CONDUCTORS. ALL CABLE IS NO. 14 EXCEPT AS INDICATED. *P* INDICATES PAIR CABLE
 - [R
Y
G] NEW SIGNAL HEAD WITH OR WITHOUT BACKPLATE
 - LUMINAIRE, 250 WATT
 - [V] VIDEO VEHICLE DETECTION SYSTEM
 - [E] EMERGENCY PREEMPTION SYSTEM

REVISIONS	
NAME	DATE

ILLINOIS DEPARTMENT OF TRANSPORTATION

SCALE: VERT. DRAWN BY
 HORIZ. CHECKED BY
 DATE

PLOT DATE = #DATE#
 FILE NAME = #FILE#
 PLOT SCALE = #SCALE#
 USER NAME = #USER#

TRAFFIC SIGNALS