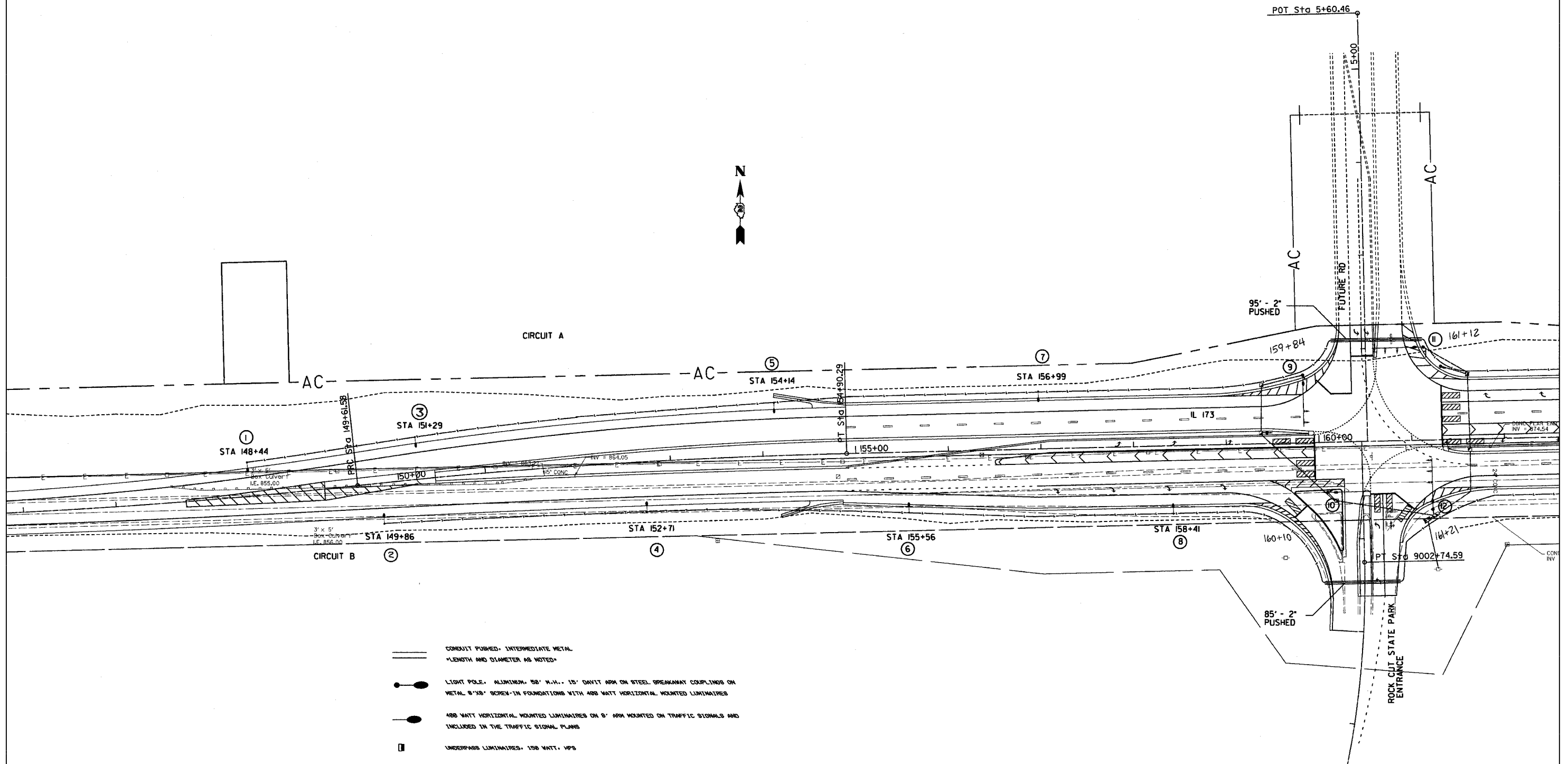


LIGHTING DETAILS

CONTRACT NO. 64594

F.A.J. RTE.	SECTION	COUNTY	TOTAL SHEETS	SHEET NO.
*	I29 K	WINNEBAGO	585	163
STA.		TO STA.		
FED. ROAD DIST. NO.		ILLINOIS	FED. AID PROJECT	

* FAI90/IL 173



- CONDUIT PUSHED, INTERMEDIATE METAL
LENGTH AND DIAMETER AS NOTED
- LIGHT POLE, ALUMINUM, 50' H.H., 15' DAVIT ARM ON STEEL BREAKAWAY COUPLINGS ON METAL 8"x8" SCREW-IN FOUNDATIONS WITH 400 WATT HORIZONTAL MOUNTED LUMINAIRES
- 400 WATT HORIZONTAL MOUNTED LUMINAIRES ON 8' ARM MOUNTED ON TRAFFIC SIGNALS AND INCLUDED IN THE TRAFFIC SIGNAL PLANS
- UNDERPASS LUMINAIRES, 150 WATT, HPS
- JUNCTION BOX, STAINLESS STEEL
- UNIT DUCT 2" x 8" XLP, 1" x 8" XLP, 1" POLYETHYLENE

REVISIONS	
NAME	DATE

ILLINOIS DEPARTMENT OF TRANSPORTATION

SCALE: VERT. _____
HORIZ. _____

DATE _____ DRAWN BY _____
CHECKED BY _____

PLOT DATE = #DATE#
FILE NAME = #FILE#
USER NAME = #USER#