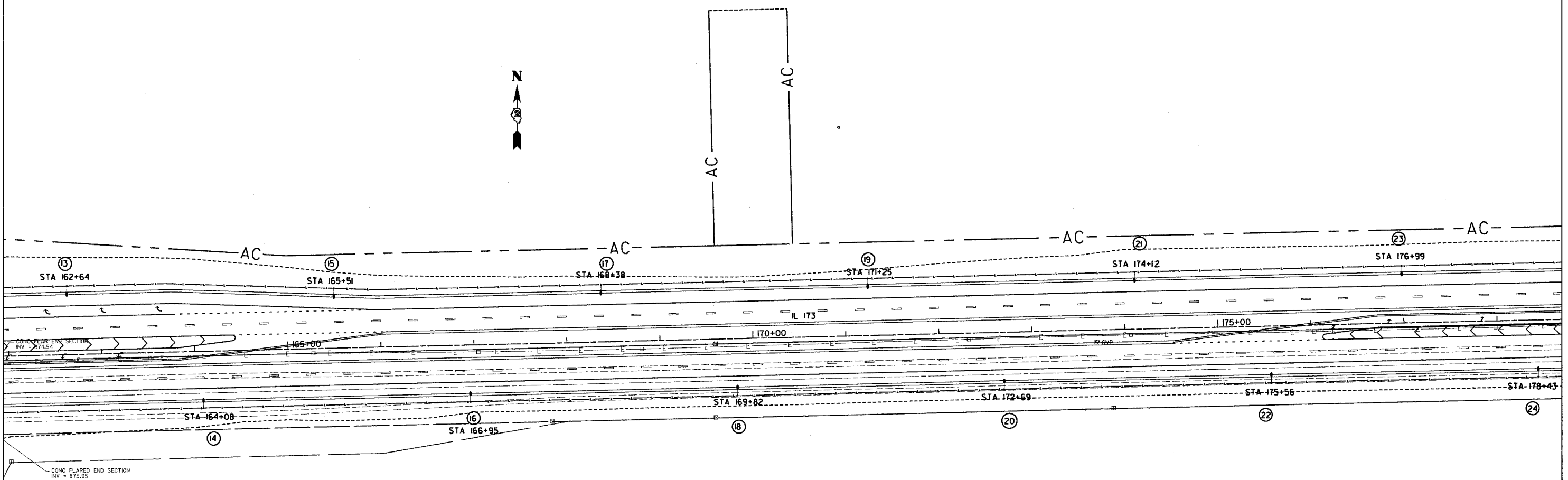


LIGHTING DETAILS

F.A.J. RTE.	SECTION	COUNTY	TOTAL SHEETS	SHEET NO.
*	I29 K	WINNEBAGO	585	164
STA.		TO STA.		
FED. ROAD DIST. NO.	ILLINOIS	FED. AID PROJECT		

* FAI90/IL 173



CONC FLARED END SECTION
INV = 874.54

CONC FLARED END SECTION
INV = 875.95

- CONDUIT PUSHED, INTERMEDIATE METAL
LENGTH AND DIAMETER AS NOTED
- LIGHT POLE, ALUMINUM, 80' H.H., 15' DAYLIT ARM ON STEEL BREAKAWAY COUPLINGS ON METAL 8"X8" SCREEN-1IN FOUNDATIONS WITH 48W MATT HORIZONTAL MOUNTED LUMINAIRES
- 48W MATT HORIZONTAL MOUNTED LUMINAIRES ON 8' ARM MOUNTED ON TRAFFIC SIGNALS AND INCLUDED IN THE TRAFFIC SIGNAL PLANS
- UNDERPASS LUMINAIRES, 150 WATT, HPB
- JUNCTION BOX, STAINLESS STEEL
- UNIT DUCT 2 *8 XLP, 1 *8 XLP, 1' POLYETHYLENE

REVISIONS	
NAME	DATE

ILLINOIS DEPARTMENT OF TRANSPORTATION

SCALE: VERT. _____
DATE: _____ HORIZ. _____

DRAWN BY _____
CHECKED BY _____

PLOT DATE = #DATE#
DRAWN BY = #USER#
PLOT SCALE = #SCALE#
USER NAME = #USER#