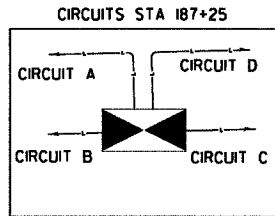
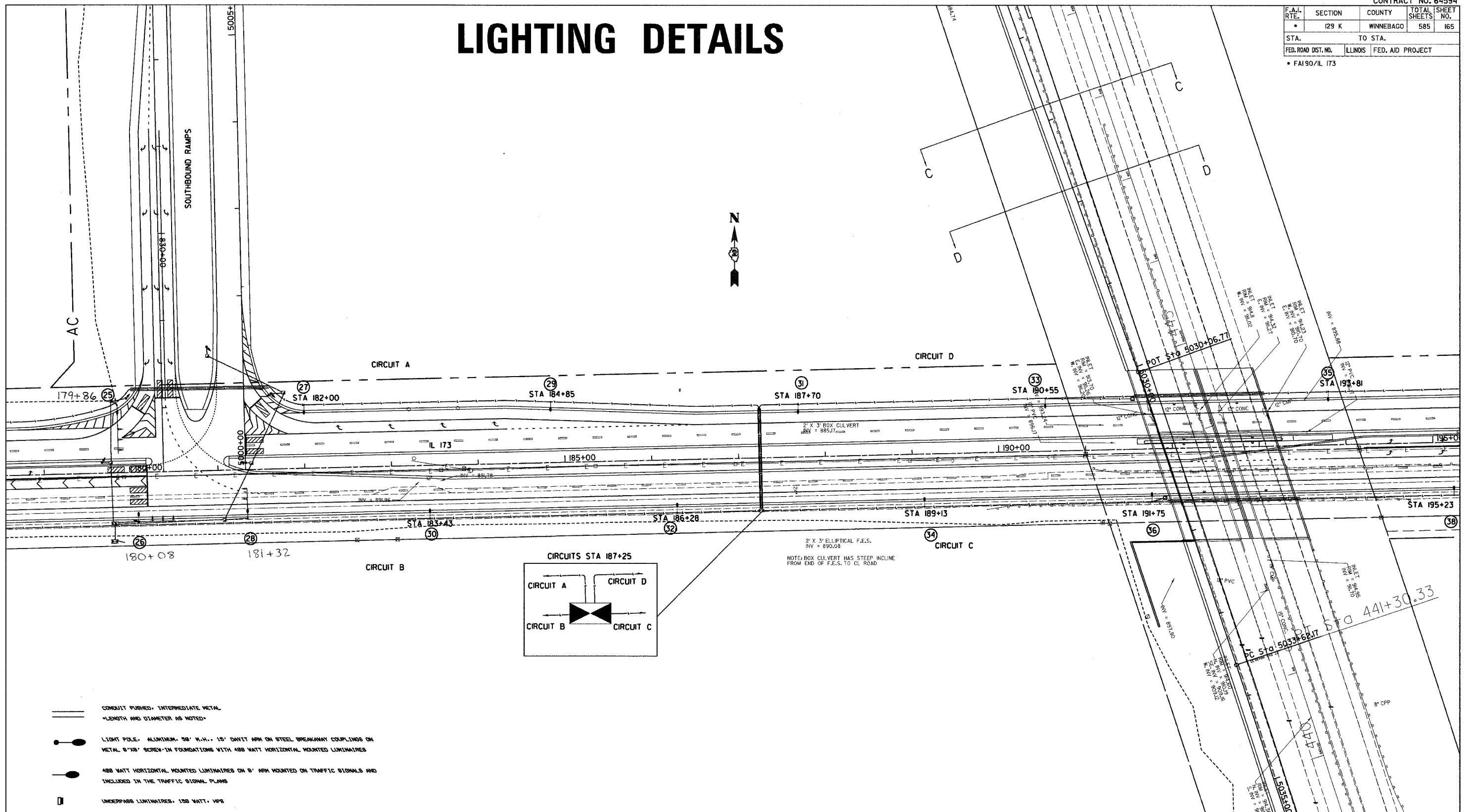


F.A.I. RTE.	SECTION	COUNTY	TOTAL SHEETS	SHEET NO.
•	I29 K	WINNEBAGO	585	165
STA.		TO STA.		
FED. ROAD DIST. NO.	ILLINOIS	FED. AID PROJECT		
• FA190/IL 173				

# LIGHTING DETAILS



2' X 3' ELLIPTICAL F.E.S.  
INV = 890.08  
NOTE: BOX CULVERT HAS STEEP INCLINE FROM END OF F.E.S. TO CL ROAD

- CONDUIT PUSHED, INTERMEDIATE METAL  
LENGTH AND DIAMETER AS NOTED
- LIGHT POLE, ALUMINUM, 30' H.H., 15' DAVIT ARM ON STEEL BREAKAWAY COUPLINGS ON METAL 8" X 8" SCREW-IN FOUNDATIONS WITH 400 WATT HORIZONTAL MOUNTED LUMINAIRES
- 400 WATT HORIZONTAL MOUNTED LUMINAIRES ON 8' ARM MOUNTED ON TRAFFIC SIGNALS AND INCLUDED IN THE TRAFFIC SIGNAL PLANS
- UNDERPASS LUMINAIRE, 100 WATT, HPS
- JUNCTION BOX, STAINLESS STEEL
- UNIT TUB 2 #8 XLP, 1 #8 XLP, 1" POLYETHYLENE

REVISIONS	
NAME	DATE

ILLINOIS DEPARTMENT OF TRANSPORTATION

SCALE: VERT. \_\_\_\_\_  
HORIZ. \_\_\_\_\_

DATE \_\_\_\_\_ DRAWN BY \_\_\_\_\_  
CHECKED BY \_\_\_\_\_

PLOT DATE = 04/28/04  
FILE NAME = 041616.DWG  
USER NAME = BUSER