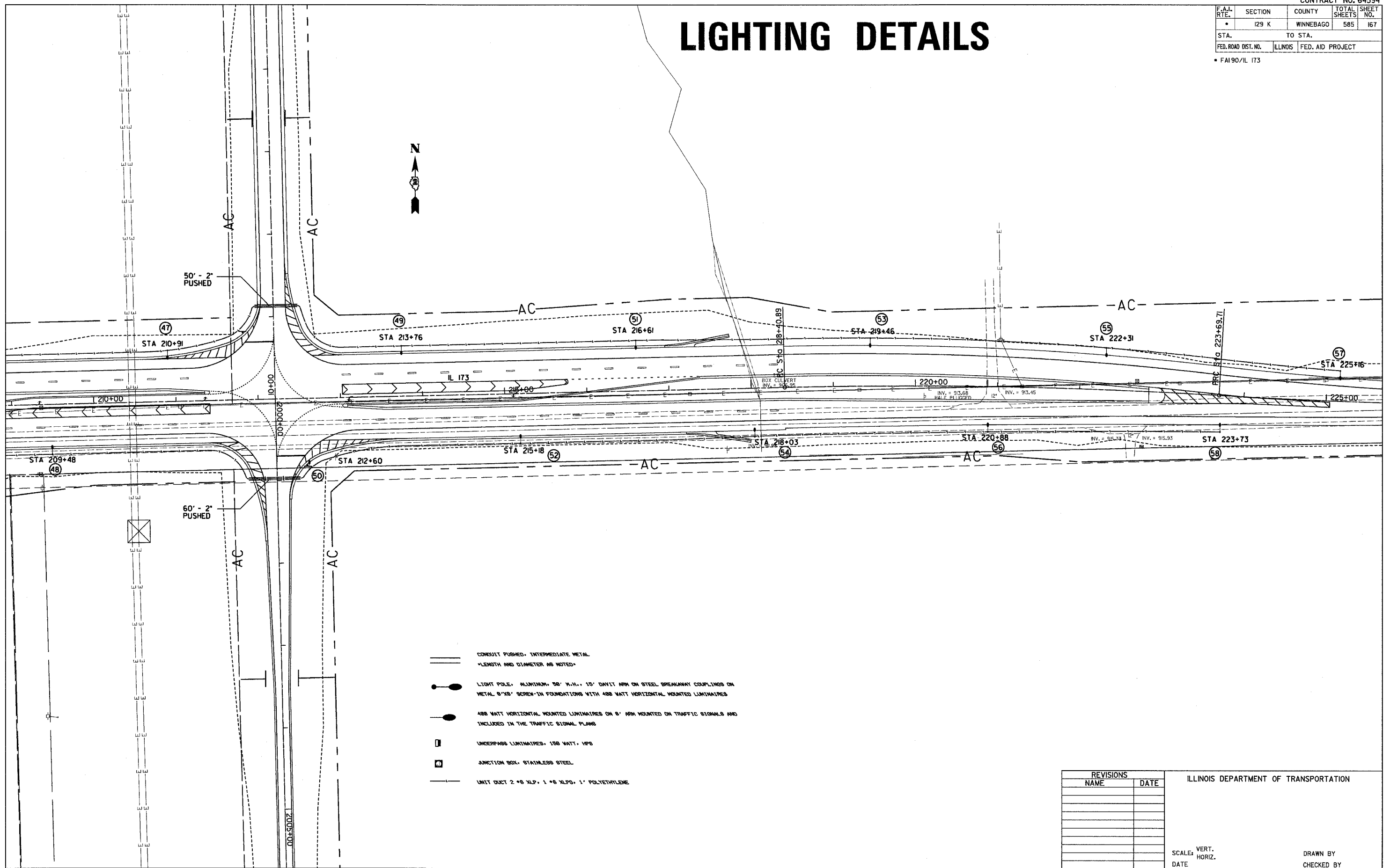


F.A.I. RTE.	SECTION	COUNTY	TOTAL SHEETS	SHEET NO.
•	I29 K	WINNEBAGO	585	167
STA.		TO STA.		
FED. ROAD DIST. NO.	ILLINOIS	FED. AID PROJECT		

• FAI90/IL 173

LIGHTING DETAILS



- CONDUIT PUSHED, INTERMEDIATE METAL
LENGTH AND DIAMETER AS NOTED
- LIGHT POLE, ALUMINUM, 50' H.H., 15' DAVIT ARM ON STEEL BREAKAWAY COUPLINGS ON METAL 8"x8" SCREEN-IN FOUNDATIONS WITH 800 WATT HORIZONTAL MOUNTED LUMINAIRES
- 800 WATT HORIZONTAL MOUNTED LUMINAIRES ON 8' ARM MOUNTED ON TRAFFIC SIGNALS AND INCLUDED IN THE TRAFFIC SIGNAL PLANS
- UNDERPASS LUMINAIRES, 150 WATT, MP8
- JUNCTION BOX, STAINLESS STEEL
- UNIT DUCT 2 #8 XLP, 1 #8 XLP, 1' POLYETHYLENE

REVISIONS	
NAME	DATE

ILLINOIS DEPARTMENT OF TRANSPORTATION

SCALE: VERT. _____
 HORIZ. _____

DATE _____ DRAWN BY _____
 CHECKED BY _____

PLOT DATE = #DATE#
 FILE NAME = #FILE#
 USER NAME = #USER#