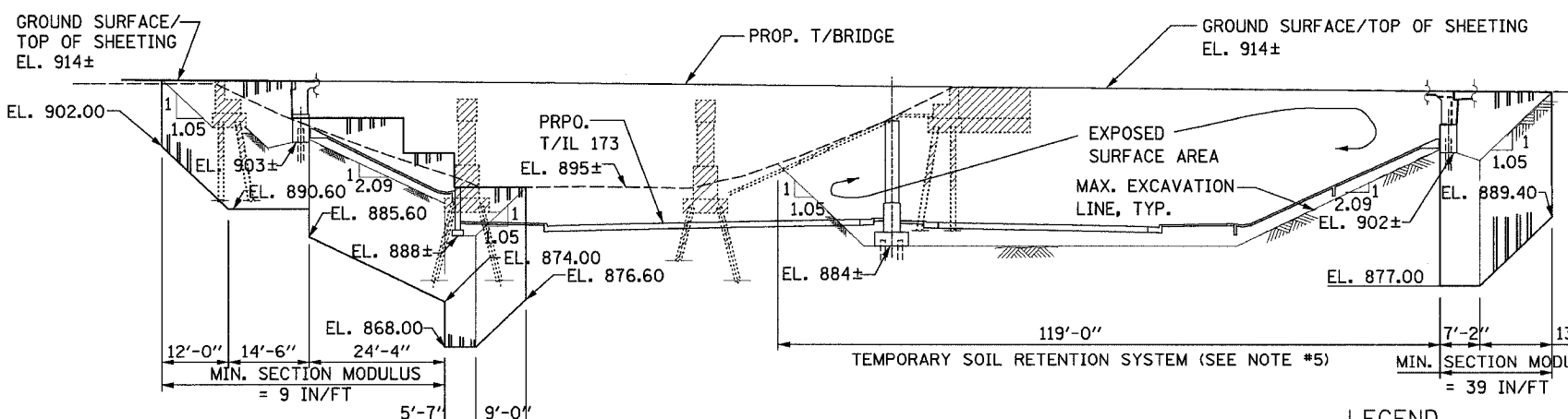
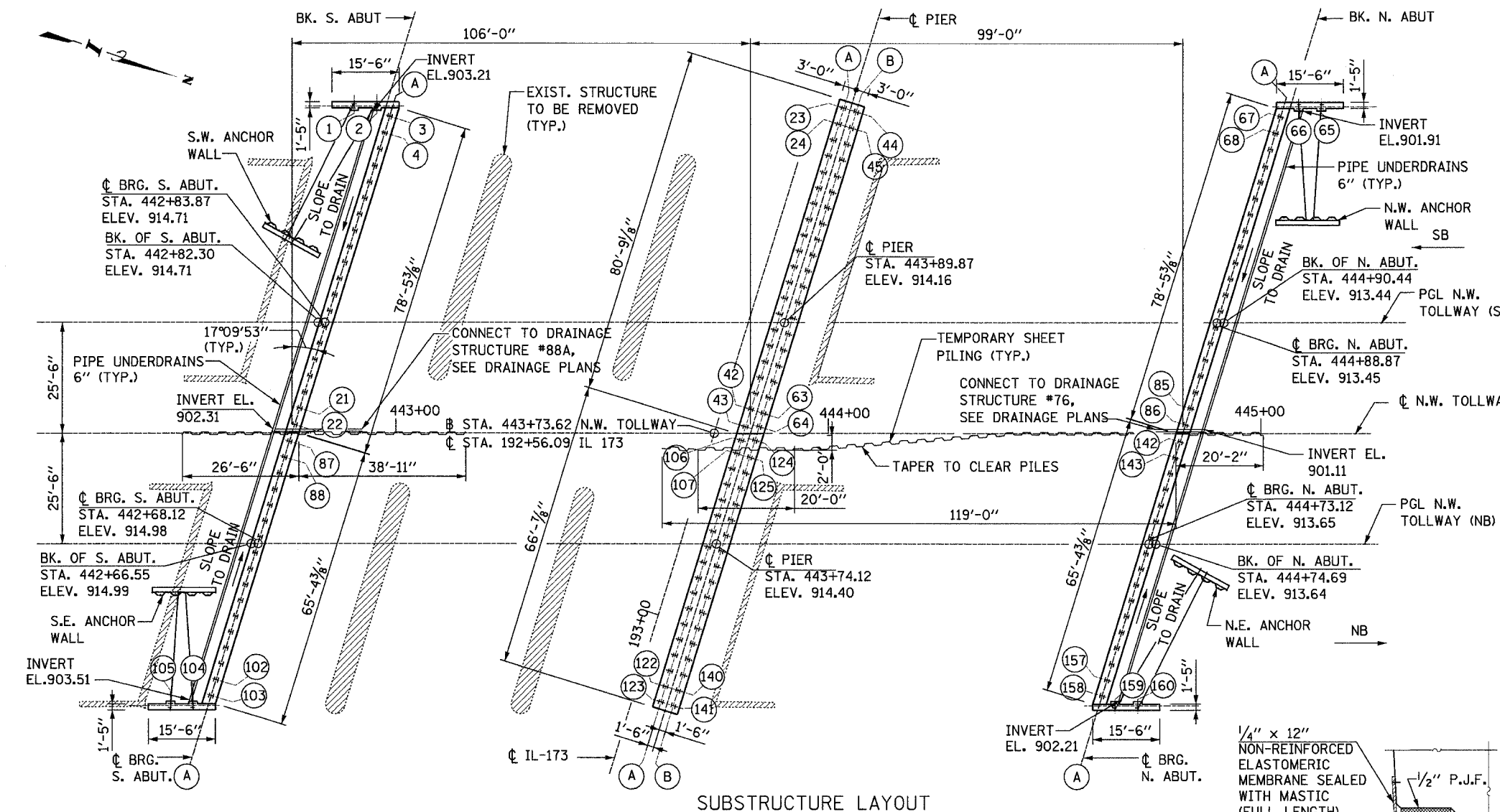


STATE OF ILLINOIS
DEPARTMENT OF TRANSPORTATION

ROUTE NO.	SECTION	COUNTY	SHEET	SHEET NO. S06
303	129K	WINNEBAGO	585	OF SHEETS S47
F. A. P.				
FED. ROAD DIST. NO.	ILLINOIS	FED. AID PROJECT	CONTRACT NO. 64594	

NOTES:

1. THE INFORMATION SHOWN FOR TEMPORARY SHEET PILING IS ESTIMATED. IT IS THE CONTRACTOR'S RESPONSIBILITY TO PROVIDE A DESIGN FOR THE TEMPORARY SHEET PILING, COMPLETE WITH CALCULATIONS AND DRAWINGS, SEALED BY A LICENSED STRUCTURAL ENGINEER, FOR THE ENGINEER'S REVIEW IN ACCORDANCE WITH SECTION 105.2.2 OF THE STANDARD SPECIFICATIONS.
2. WALERS, RAKERS AND TIEBACKS ARE NOT SHOWN AND ARE THE RESPONSIBILITY OF THE CONTRACTOR.
3. IF THE CONTRACTOR CHOOSES TO ALTER THE TEMPORARY CANTILEVERED SHEET PILING DESIGN REQUIREMENTS SHOWN ON THE PLAN, A DESIGN SUBMITTAL INCLUDING PLAN DETAILS AND CALCULATIONS WILL BE REQUIRED FOR REVIEW AND ACCEPTANCE BY THE ENGINEER.
4. HARD DRIVING MAY BE ENCOUNTERED DURING THE SHEET PILING INSTALLATION. THE CONTRACTOR SHALL PROVIDE THE APPROPRIATE DRIVING EQUIPMENT FOR THE SOIL CONDITIONS INDICATED ON THE BORING LOGS.
5. WHERE A CANTILEVERED SHEET PILING DESIGN DOES NOT APPEAR FEASIBLE AND ADDITIONAL MEMBERS OR OTHER RETENTION SYSTEMS MAY BE NECESSARY, THE CONTRACTOR SHALL SUBMIT A TEMPORARY SOIL RETENTION SYSTEM DESIGN INCLUDING PLAN DETAILS AND CALCULATIONS FOR REVIEW AND ACCEPTANCE BY THE ENGINEER.

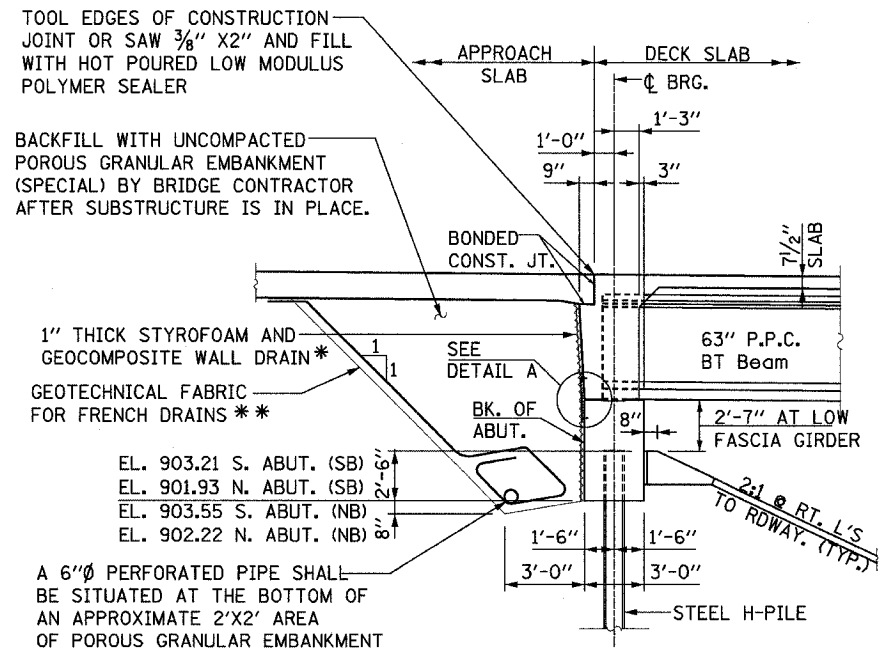


DESIGNED	JZ
CHECKED	JIG
DRAWN	JZ
CHECKED	JIG

LEGEND

- (A) PILE LINE
- (157) PILE NUMBER
- H H-PILES
- TEMPORARY SHEET PILING
- Denotes Removal

BILL OF MATERIAL			
PAY ITEM NUMBER	DESCRIPTION	UNIT	QUANTITY
51205200	Temporary Sheet Piling	Sq. Ft.	2,105
X0323988	Temporary Soil Retention System	Sq. Ft.	2,740



SECTION THROUGH ABUTMENT

- * COST OF STYROFOAM IS INCLUDED WITH THE COST OF GEOCOMPOSITE WALL DRAIN.
- ** COST OF GEOTECHNICAL FABRIC IS INCLUDED WITH THE COST OF POROUS GRANULAR EMBANKMENT (SPECIAL).

SUBSTRUCTURE LAYOUT
N.W. TOLLWAY
OVER IL 173 (F.A.P. ROUTE 303)
SECTION 129K
WINNEBAGO COUNTY
STATION 443+73.62
S.N. 101-9963 (SB) & 101-9964 (NB)
TOLLWAY S.N. 703 (NB) & 704 (SB)