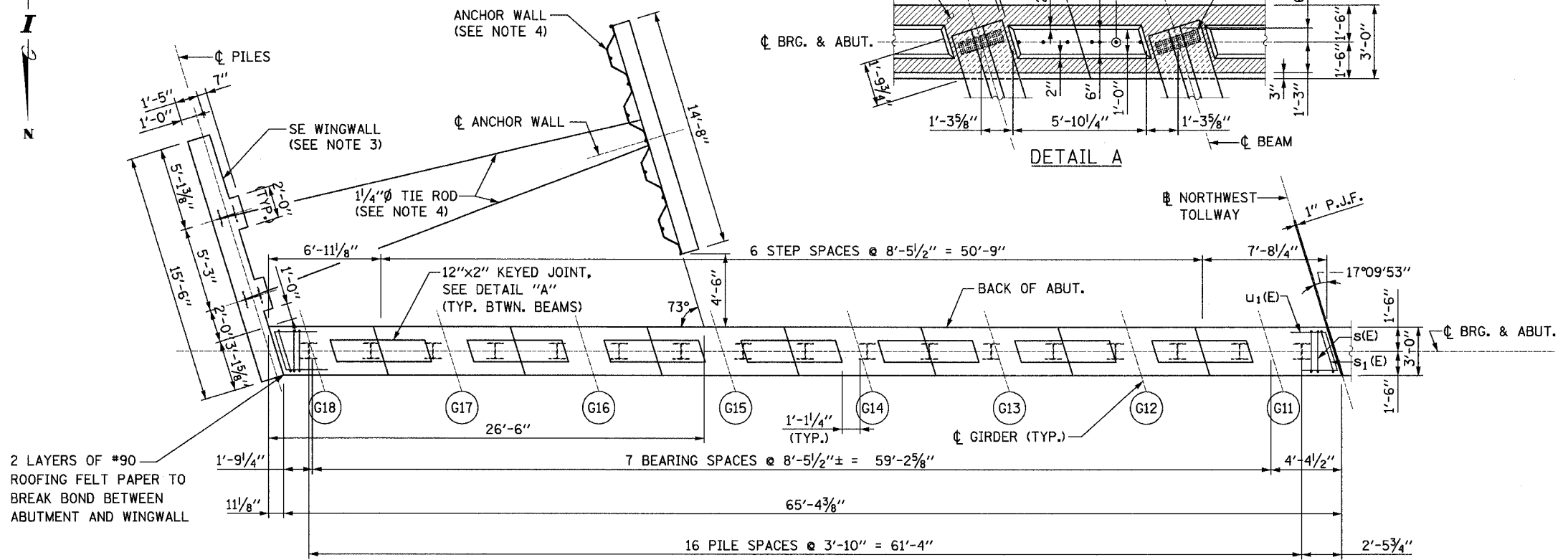
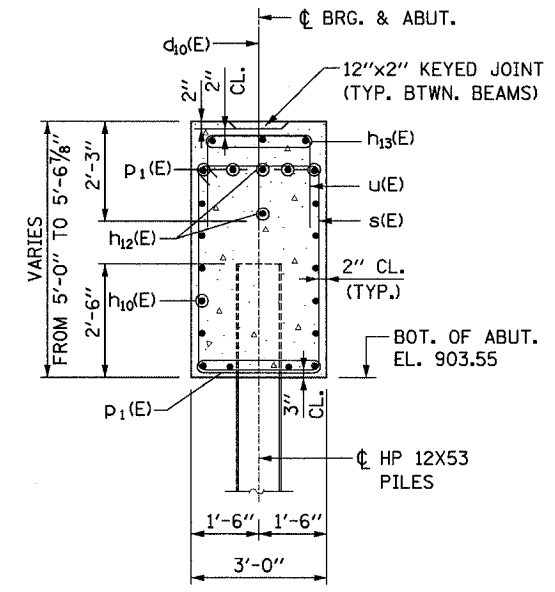
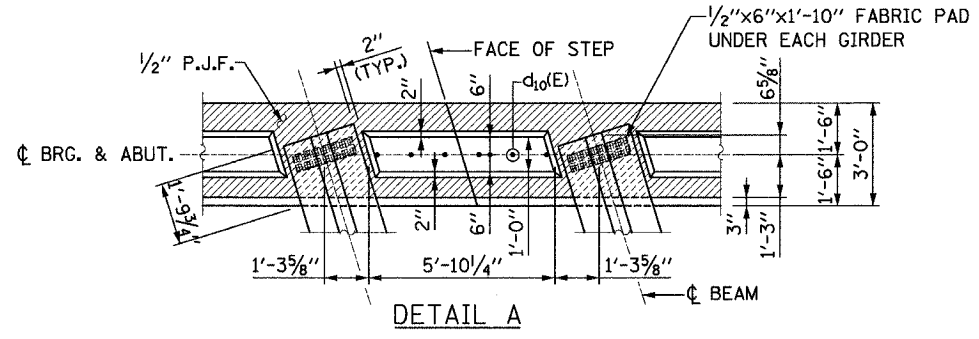


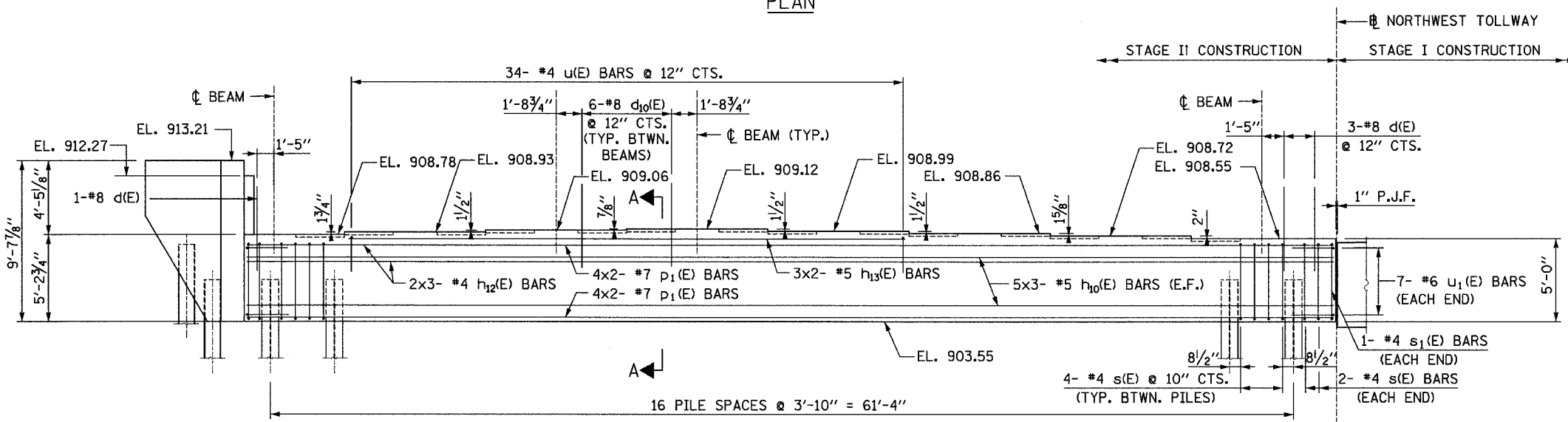
STATE OF ILLINOIS
DEPARTMENT OF TRANSPORTATION

ROUTE NO.	SECTION	COUNTY	SHEET	SHEET NO.
303	129K	WINNEBAGO	585	191
FED. ROAD DIST. NO.				CONTRACT NO. 64594

SHEET NO. S12
OF SHEETS S47



PLAN



ELEVATION
(LOOKING SOUTH)

NOTES:

- ALL REINFORCEMENT BARS DESIGNATED (E) SHALL BE EPOXY COATED.
- BARS INDICATED THUS 2X3 -#5 ETC. INDICATES 2 LINE OF BARS WITH 3 LENGTHS PER LINE.
- FOR BILL OF MATERIAL AND WINGWALL DETAILS, SEE SHEET S14.
- FOR ANCHOR WALL AND TIE ROD DETAILS, SEE SHEET S15.

DESIGNED	MS
CHECKED	JIG
DRAWN	MS
CHECKED	JIG

PILE DATA

TYPE: STEEL HP 12X53 PILES W/METAL SHOES
DESIGN CAPACITY: 55 TON
DRIVEN CAPACITY: 69 TON
EST. LENGTH: 49'
NO. REQ'D.: 19

LEGEND

- I - PILE
- E.F. - EACH FACE
- BOT. - BOTTOM
- ABUT. - ABUTMENT
- BRG. - BEARING
- BTWN. - BETWEEN
- P.J.F. - PREFORMED JOINT FILLER



SOUTH ABUTMENT (NB)
N.W. TOLLWAY
OVER IL 173 (F.A.P. ROUTE 303)
SECTION 129K
WINNEBAGO COUNTY
STATION 443+73.62
S.N. 101-9963 (SB) & 101-9964 (NB)
TOLLWAY S.N. 703 (NB) & 704 (SB)