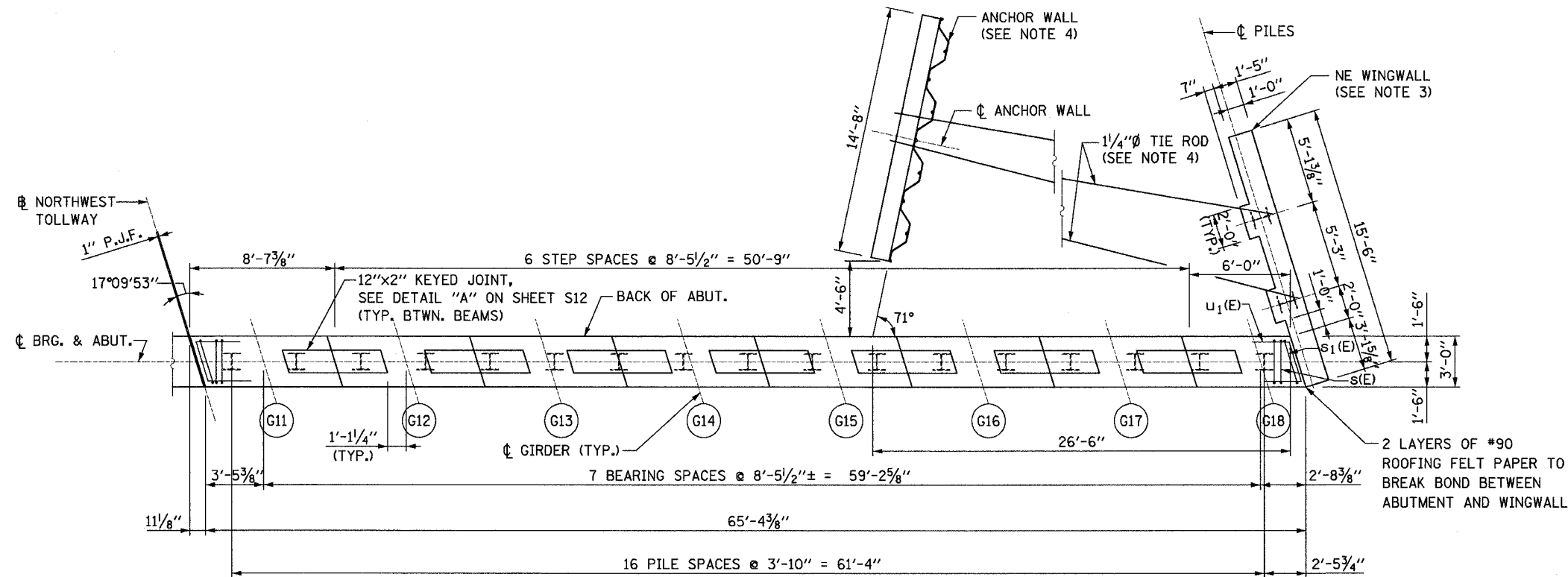


STATE OF ILLINOIS
DEPARTMENT OF TRANSPORTATION

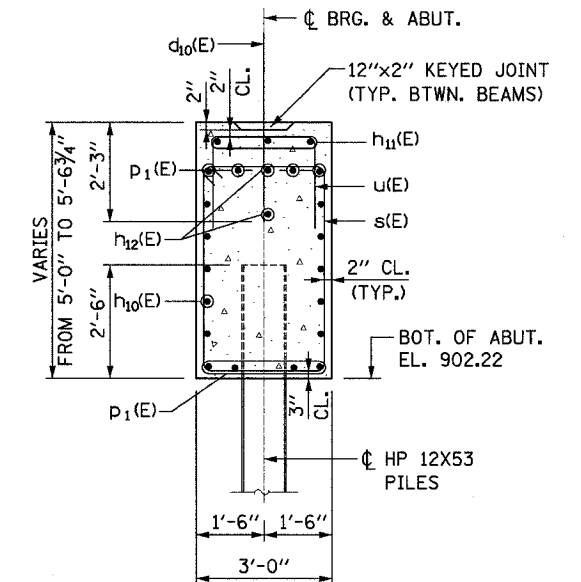
ROUTE NO.	SECTION	COUNTY	SHEET	SHEET
303	129K	WINNEBAGO	585	192
F. A. P.		CONTRACT NO. 64594		
FED. ROAD DIST. NO.		ILLINOIS		

SHEET NO. S13

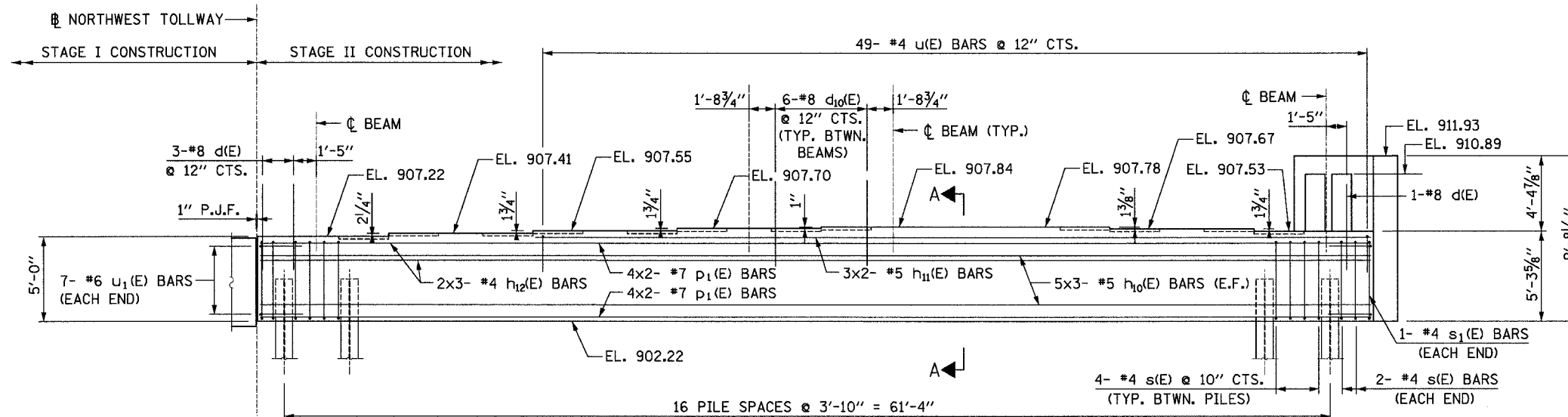
OF SHEETS S47



PLAN



SECTION A-A



ELEVATION
(LOOKING NORTH)

NOTES:

1. ALL REINFORCEMENT BARS DESIGNATED (E) SHALL BE EPOXY COATED.
2. BARS INDICATED THUS 2X3 -#5 ETC. INDICATES 2 LINE OF BARS WITH 3 LENGTHS PER LINE.
3. FOR BILL OF MATERIAL AND WINGWALL DETAILS, SEE SHEET S14.
4. FOR ANCHOR WALL AND TIE ROD DETAILS, SEE SHEET S15.

DESIGNED	MS
CHECKED	JIG
DRAWN	MS
CHECKED	JIG

PILE DATA

TYPE: STEEL HP 12X53 PILES W/METAL SHOES
DESIGN CAPACITY: 55 TON
DRIVEN CAPACITY: 69 TON
EST. LENGTH: 57'
NO. REQ'D.: 19

LEGEND

- I - PILE
- E.F. - EACH FACE
- BOT. - BOTTOM
- ABUT. - ABUTMENT
- BRG. - BEARING
- BTWN. - BETWEEN
- P.J.F. - PREFORMED JOINT FILLER



NORTH ABUTMENT (NB)
N.W. TOLLWAY
OVER IL 173 (F.A.P. ROUTE 303)
SECTION 129K
WINNEBAGO COUNTY
STATION 443+73.62
S.N. 101-9963 (SB) & 101-9964 (NB)
TOLLWAY S.N. 703 (NB) & 704 (SB)