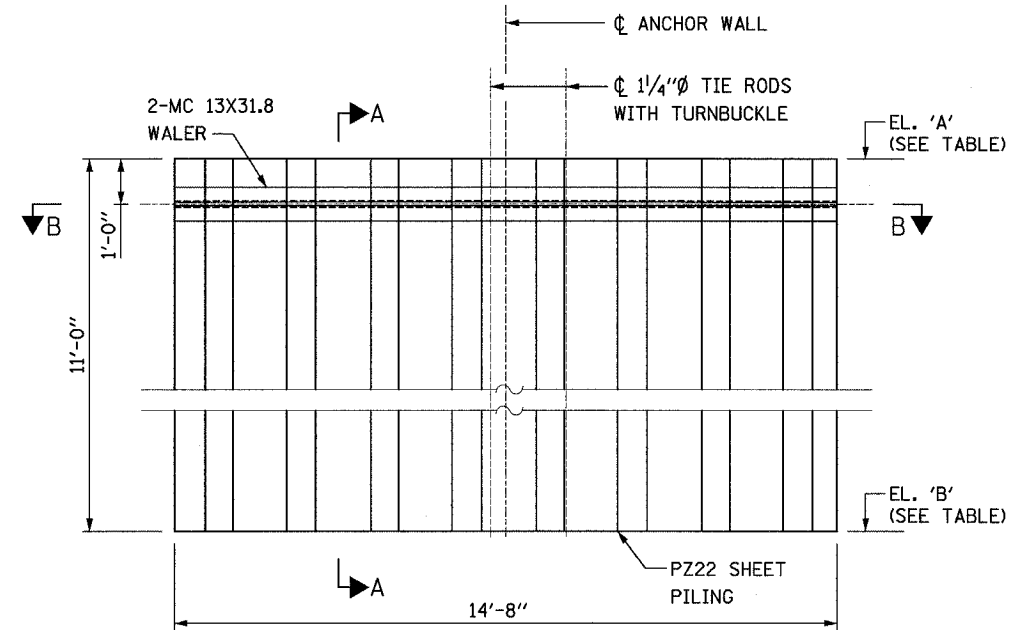


STATE OF ILLINOIS
DEPARTMENT OF TRANSPORTATION

ROUTE NO.	SECTION	COUNTY	SHEET	SHEET NO.
303	129K	WINNEBAGO	585	194
CONTRACT NO. 64594				OF SHEETS S47

NOTES:

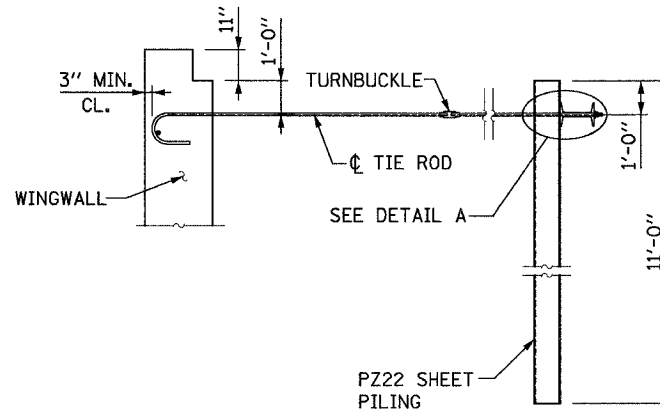
- WORK THIS SHEET WITH SHEETS S09 THROUGH S14.
- STEEL SHEET PILING SHALL CONFORM TO THE REQUIREMENTS OF AASHTO M202.
- HIGH STRENGTH STEEL BOLTS, NUTS AND WASHERS SHALL CONFORM TO THE REQUIREMENTS OF AASHTO M164.
- WALE SHALL CONFORM TO THE REQUIREMENT OF AASHTO M270 GRADE 36.
- TIE RODS SHALL CONFORM TO THE REQUIREMENTS OF AASHTO M183.
- TIE RODS AND TURNBUCKLES SHALL BE GIVEN ONE SHOP COAT OF INORGANIC ZINC RICH PRIMER. AFTER FIELD INSTALLATION THE TIE RODS AND TURNBUCKLES SHALL BE WRAPPED WITH "TAPECOAT - CT" OR AN APPROVED EQUAL IN ACCORDANCE WITH THE MANUFACTURERS RECOMMENDATIONS.
- THE COST OF WALERS, TIE RODS, TURNBUCKLES, PLATES, SHIMS, NUTS & BOLTS ETC. NECESSARY FOR ANCHOR WALL ASSEMBLY INCLUDING CUTTING HOLES IN SHEET PILING FOR THE TIE RODS, IS INCLUDED WITH THE COST OF STEEL SHEET PILING (SPECIAL).



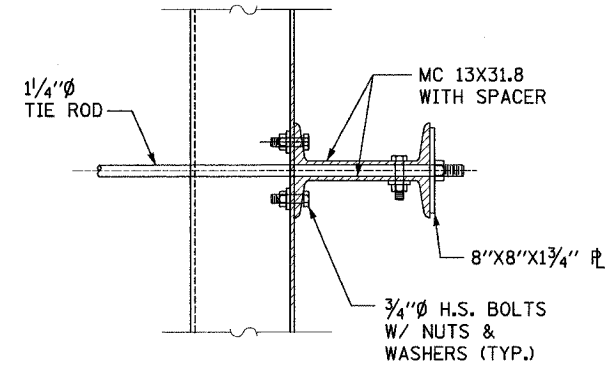
ANCHOR WALL ELEVATION

TABLE

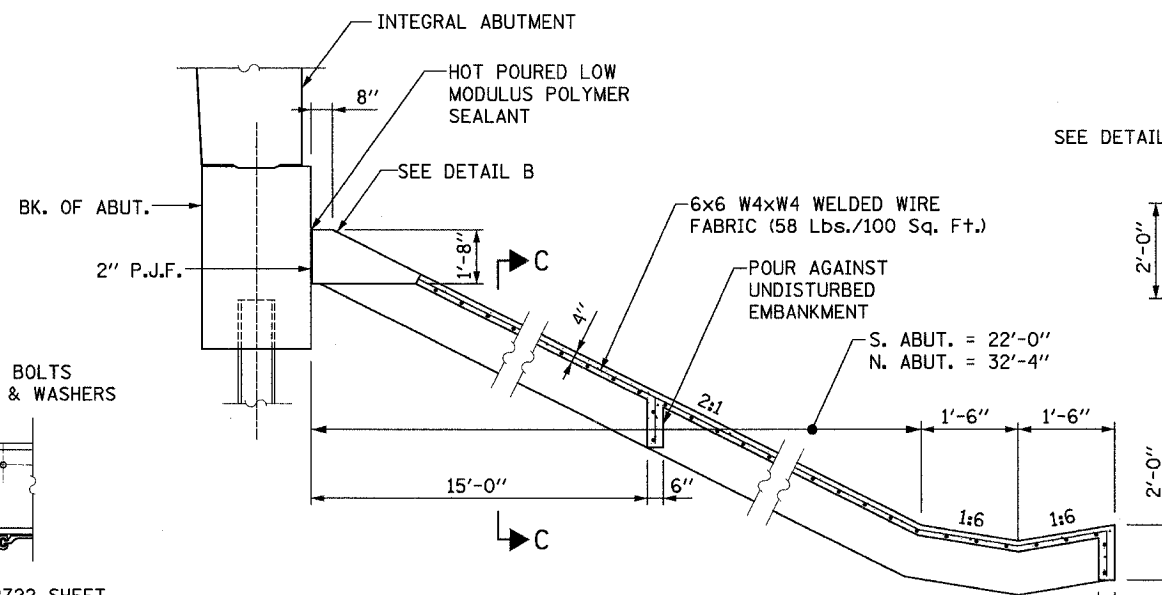
LOCATION	ELEVATION	
	A	B
NORTHWEST	910.29	899.29
SOUTHWEST	911.72	900.72
NORTHEAST	910.89	899.89
SOUTHEAST	912.29	901.29



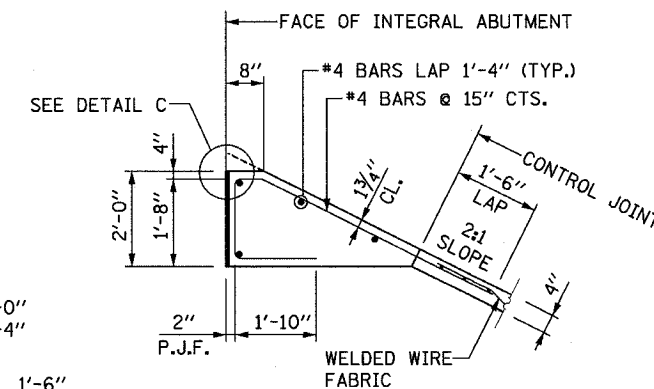
SECTION A-A



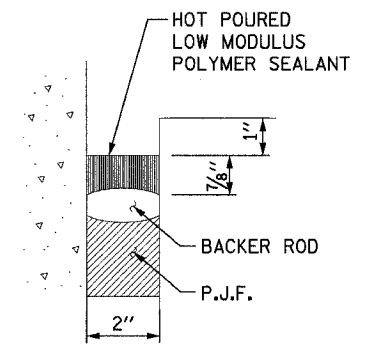
DETAIL A



SECTION THRU SLOEWALL



DETAIL B

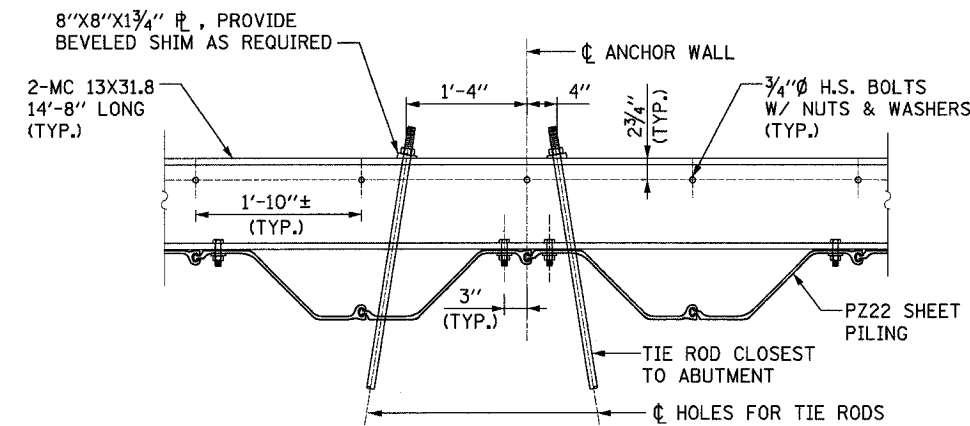


DETAIL C

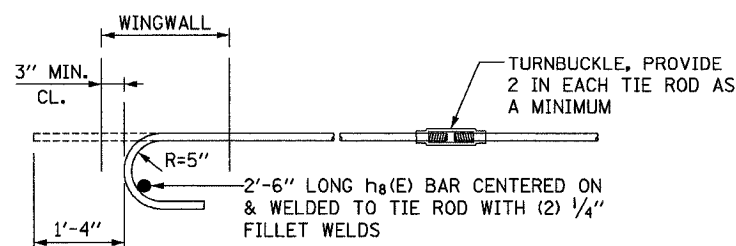
SEALANT BACKER ROD AND P.J.F. SHALL MEET THE REQUIREMENTS OF SECTION 1050.2 OF THE STANDARD SPECIFICATION.

BILL OF MATERIAL			
PAY ITEM NUMBER	DESCRIPTION	UNIT	QUANTITY
51204910	Steel Sheet Piling (Special)	Sq. Ft.	646
51100100	Sloewall 4"	Sq. Yds.	1119

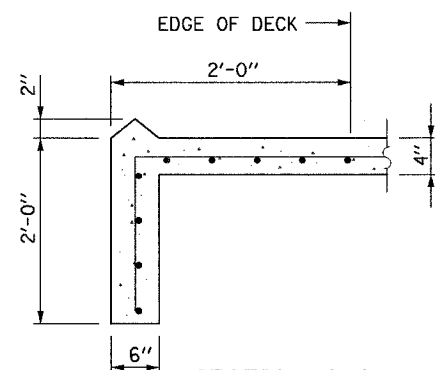
ANCHOR WALL AND SLOPE WALL DETAILS
N.W. TOLLWAY
OVER IL 173 (F.A.P. ROUTE 303)
SECTION 129K
WINNEBAGO COUNTY
STATION 443+73.62
S.N. 101-9963 (SB) & 101-9964 (NB)
TOLLWAY S.N. 703 (NB) & 704 (SB)



SECTION B-B



TIE ROD DETAIL
(SEE NOTE 7)



SECTION C-C

DESIGNED	MS
CHECKED	JIG
DRAWN	MS
CHECKED	JIG