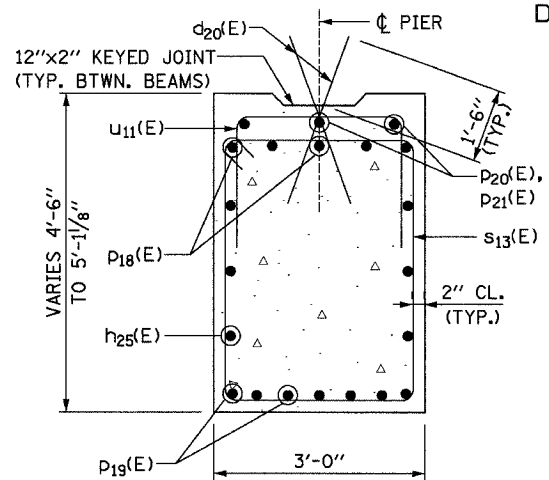
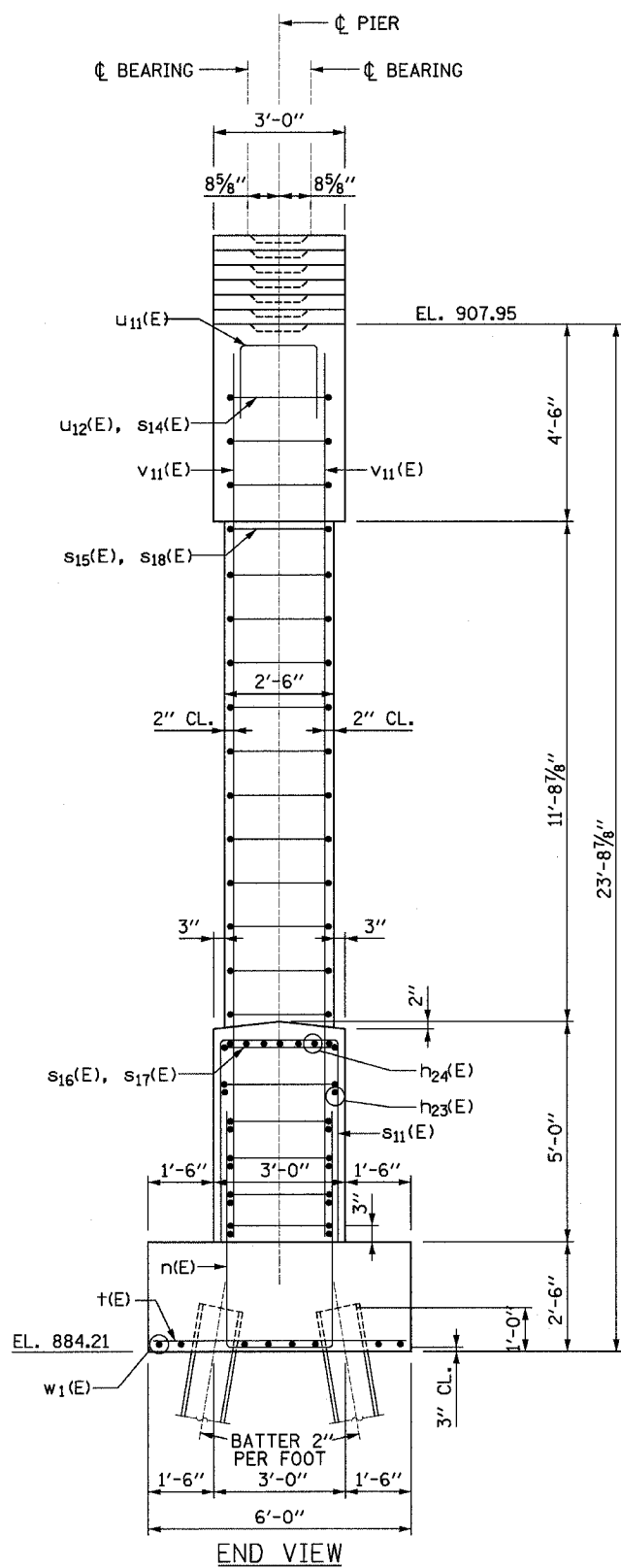


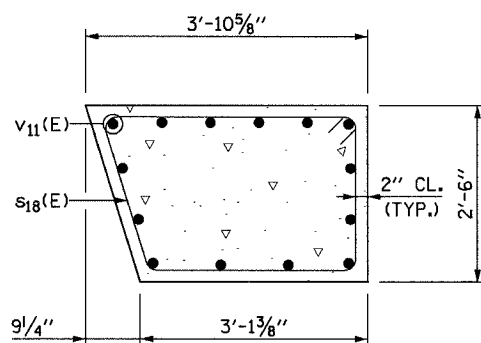
STATE OF ILLINOIS
DEPARTMENT OF TRANSPORTATION

ROUTE NO.	SECTION	COUNTY	SHEET NO.	SHEET NO.
303	129K	WINNEBAGO	585	198
FED. ROAD DIST. NO.		ILLINOIS	FED. AID PROJECT-	
		CONTRACT NO. 64594		

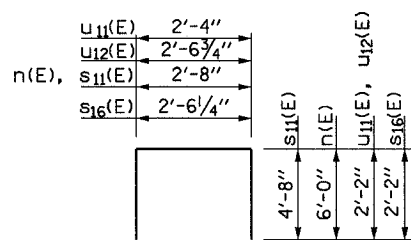
SHEET NO. S19
OF SHEETS S47



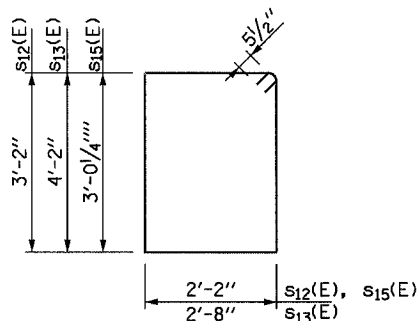
SECTION A-A



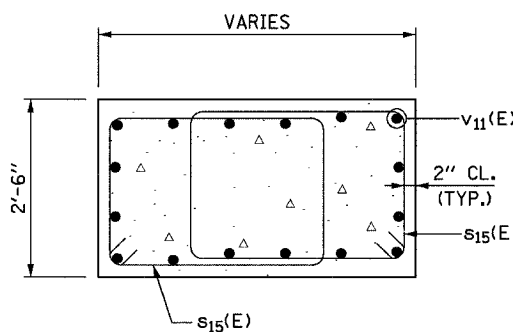
SECTION D-D



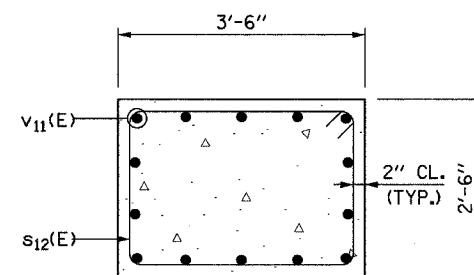
BAR n(E), S11(E), S16(E), U11(E), U12(E)



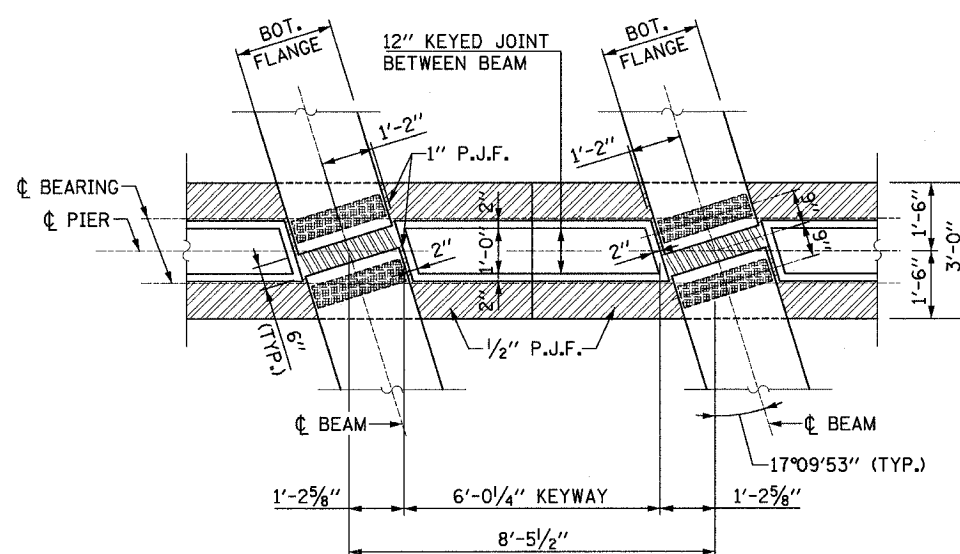
BAR S12(E), S13(E), S15(E)



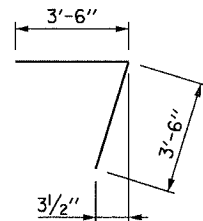
SECTION B-B



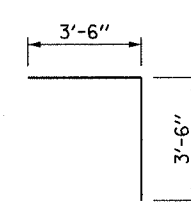
SECTION C-C



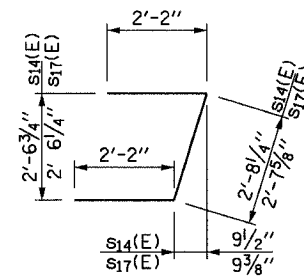
PIER CAP KEYWAY DETAIL



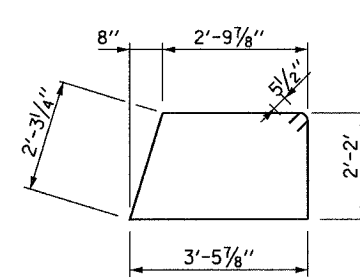
BAR P11(E)



BAR P12(E)



BAR S14(E), S17(E)



BAR S18(E)

REINFORCING BAR SCHEDULE

BAR	NO.	SIZE	LENGTH	SHAPE
d20(E)	42	#8	3'-0"	—
h23(E)	20	#5	34'-3"	—
h24(E)	14	#8	37'-3"	—
h25(E)	12	#5	34'-3"	—
n(E)	67	#7	14'-8"	□
p11(E)	4	#5	7'-0"	7
p12(E)	4	#5	7'-0"	7
p18(E)	10	#10	38'-6"	—
p19(E)	12	#10	35'-9"	—
p20(E)	6	#5	20'-0"	—
p21(E)	3	#5	16'-9"	—
s11(E)	67	#7	12'-0"	□
s12(E)	36	#5	11'-7"	□
s13(E)	116	#5	14'-7"	□
s14(E)	3	#5	7'-1"	7
s15(E)	24	#5	11'-4"	□
s16(E)	6	#5	6'-11"	□
s17(E)	6	#5	7'-0"	7
s18(E)	12	#5	11'-8"	□
t(E)	72	#5	5'-8"	—
u11(E)	66	#5	6'-8"	□
u12(E)	3	#5	6'-11"	□
v11(E)	72	#9	21'-0"	—
w1(E)	16	#6	35'-4"	—

BILL OF MATERIAL

PAY ITEM NUMBER	DESCRIPTION	UNIT	QUANTITY
50200100	Structure Excavation	Cu. Yds.	127.8
50300225	Concrete Structures	Cu. Yds.	128.6
50800205	Reinforcement Bars, Epoxy Coated	Pound	20,040
51201600	Furnishing Steel Piles HP 12x53	Foot	936
51202700	Driving Steel Piles	Foot	936
51204600	Metal Shoes	Each	36
50300300	Protective Coat (Special)	Sq. Yd.	262

NOTES:

- REINFORCEMENT BARS DESIGNATED (E) SHALL BE EPOXY COATED.
- WORK THIS SHEET WITH SHEET S18.

PIER DETAILS (NB)
N.W. TOLLWAY
OVER IL 173 (F.A.P. ROUTE 303)
SECTION 129K
WINNEBAGO COUNTY
STATION 443+73.62
S.N. 101-9963 (SB) & 101-9964 (NB)
TOLLWAY S.N. 703 (NB) & 704 (SB)



DESIGNED	RJO
CHECKED	JIG
DRAWN	DCP
CHECKED	JIG

PILE DATA

TYPE: STEEL H-PILES W/METAL SHOES
DESIGN CAPACITY: 55 TON
REQUIRED CAPACITY: 69 TON
EST. LENGTH: 26'
NO. REQ'D.: 36