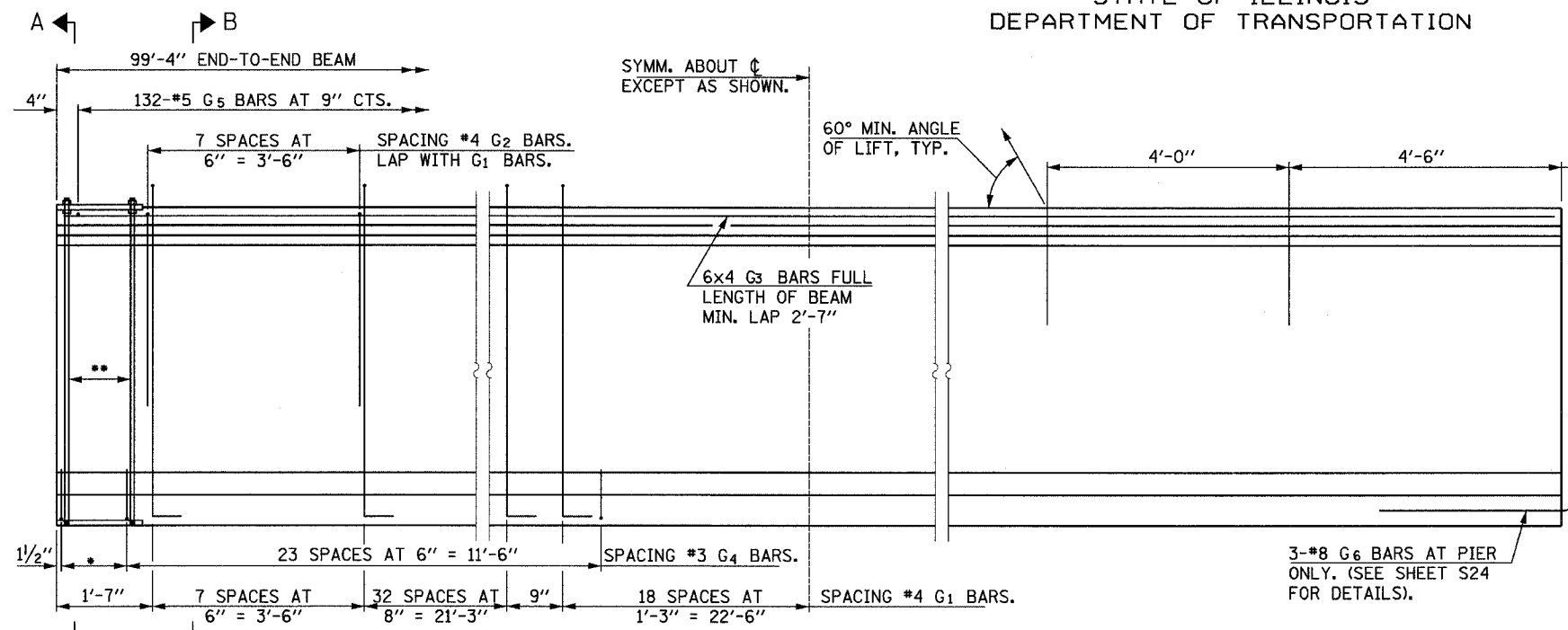


STATE OF ILLINOIS
DEPARTMENT OF TRANSPORTATION

ROUTE NO.	SECTION	COUNTY	DISTRICT	SHEET NO.
303	129k	WINNEBAGO	585	202
F.A.P.		CONTRACT NO. 64594		
FED. ROAD DIST. NO.		ILLINOIS FED. AID PROJECT-		

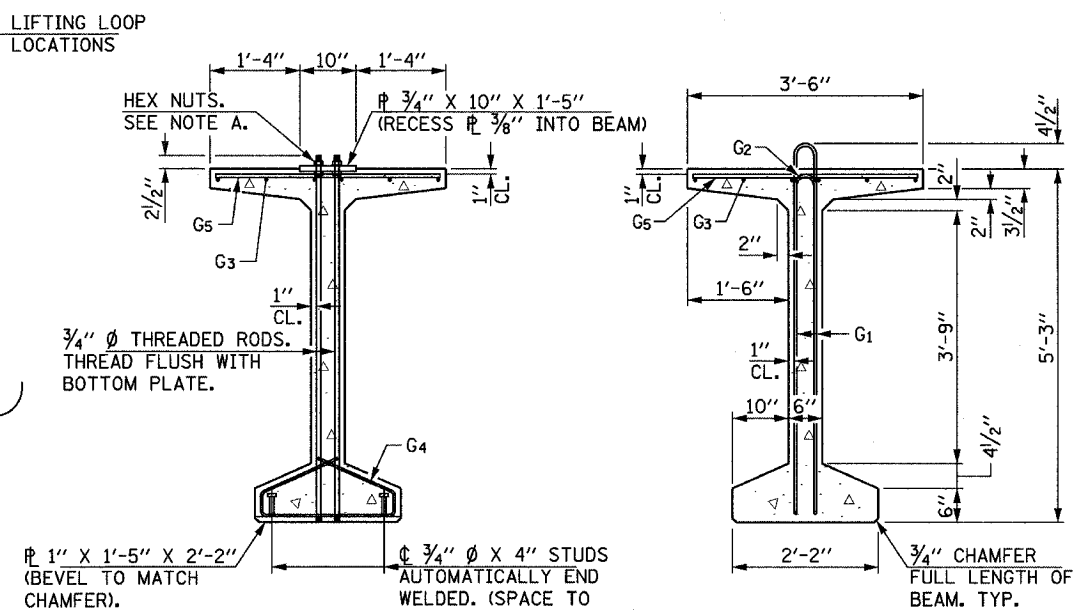
SHEET NO. S23
OF SHEETS S47



ELEVATION OF BEAM (SPAN 2)
(SHOWING REINFORCEMENT & DIMENSIONS)

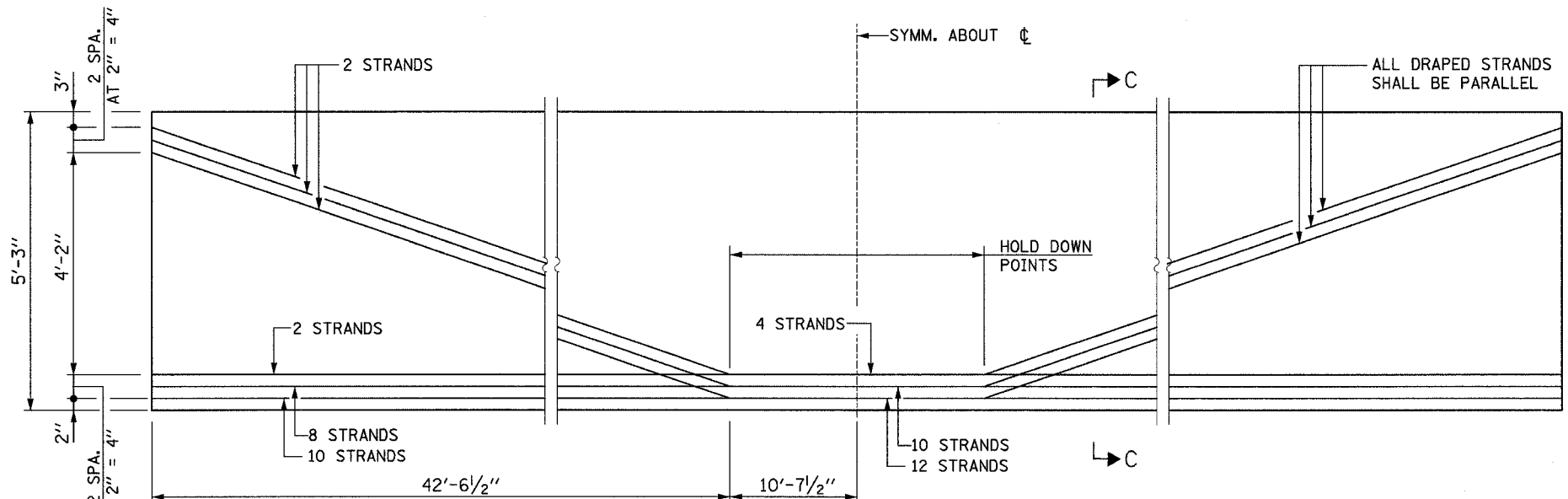
- * 4 SPACES AT 3/4" = 1'-1".
- ** 5-3/4" Ø THREADED DOWEL RODS AT 3/4" CTS., EACH FACE.

NOTE A:
HEX NUTS (TOP AND BOTTOM) WITH LOCK WASHERS (TOP). ONLY TIGHTEN SUFFICIENTLY TO COMPRESS LOCK WASHERS.



SECTION A-A

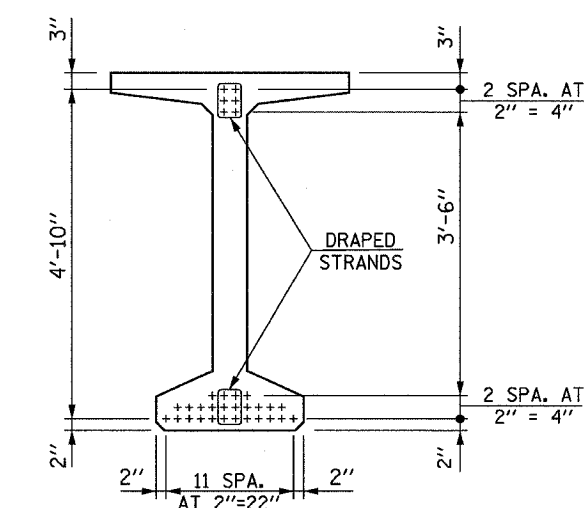
SECTION B-B



ELEVATION OF BEAM (SPAN 2)
(SHOWING PRESTRESSING STEEL)

- NOTES:
1. ALL HOLES OR INSERTS ARE TO BE CAST ACCORDING TO SKEW ANGLE ON SHT. S20 AND S21.
 2. PLACE ALL HOLES OR INSERTS TO MISS THE PRESTRESSING STRANDS.
 3. SEE SHEET S24 FOR ADDITIONAL DETAILS.
 4. REQUIRED RELEASE STRENGTH, f'ci, SHALL BE 5000 PSI.

DESIGNED	AH
CHECKED	JIG
DRAWN	DCP
CHECKED	JIG



SECTION C-C

BAR LIST
ONE BEAM ONLY

BAR NO.	SIZE	LENGTH	SHAPE
G1	#4	11'-11"	∩
G2	#4	6'-2"	∩
G3	#6	26'-8"	—
G4	#3	4'-11"	∩
G5	#5	3'-4"	∩
G6	#8	3'-9"	∩

SPAN 2 GIRDER

BILL OF MATERIAL			
PAY ITEM NUMBER	DESCRIPTION	UNIT	QUANTITY
50400735	Furnishing and Erecting Precast Prestressed Concrete Bulb T-Beam, 63"	Foot	1,791

63" PPC BULB T-BEAM
(SPAN 2)
N.W. TOLLWAY
OVER IL 173 (F.A.P. ROUTE 303)
SECTION 129K
WINNEBAGO COUNTY
STATION 443+73.62
S.N. 101-9963 (SB) & 101-9964 (NB)
TOLLWAY S.N. 703 (NB) & 704 (SB)

