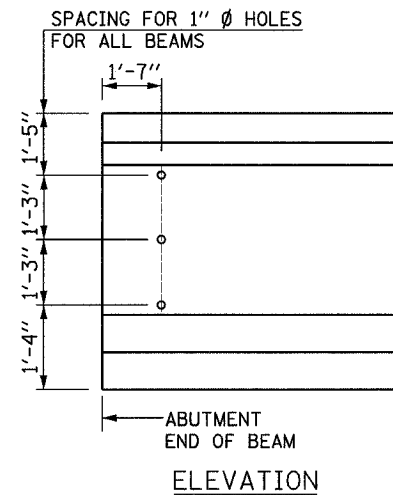
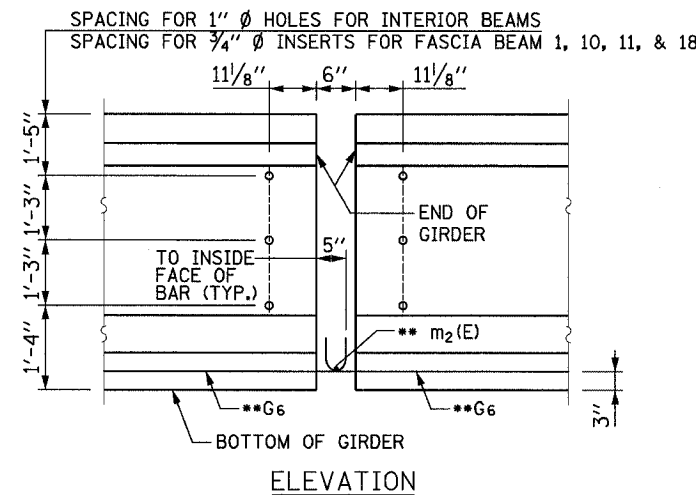


STATE OF ILLINOIS  
DEPARTMENT OF TRANSPORTATION

|                     |         |           |                   |           |                                |
|---------------------|---------|-----------|-------------------|-----------|--------------------------------|
| ROUTE NO.           | SECTION | COUNTY    | STATION           | SHEET NO. | SHEET NO. S24<br>OF SHEETS S47 |
| 303                 | 129K    | WINNEBAGO | 585               | 203       |                                |
| FED. ROAD DIST. NO. |         | ILLINOIS  | FED. AID PROJECT- |           | CONTRACT NO. 64594             |

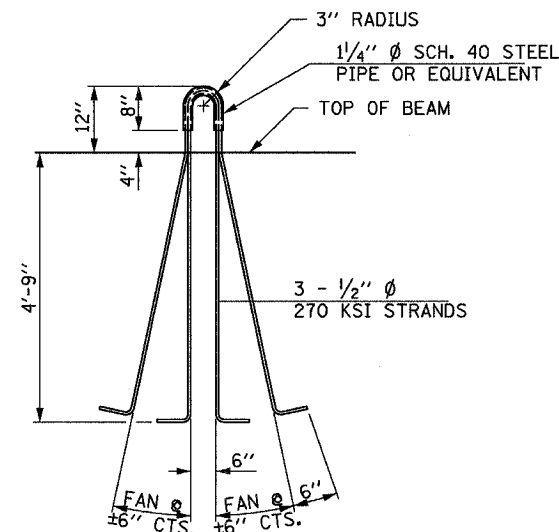


ELEVATION



ELEVATION

\*\* TIE #8 BARS AND G6 BARS WITH NO. 9 WIRE TIGHTLY FASTENED TO PREVENT ANY MOVEMENT BETWEEN BARS.



LIFTING LOOP DETAIL

**NOTES**

INSERTS FOR 3/4"  $\phi$  THREADED DOWEL RODS, WHEN SPECIFIED, ARE TO BE TWO STRUT, COIL TYPE FOR INTERIOR BEAMS AND SINGLE COIL, FLARED LOOP TYPE FOR EXTERIOR BEAMS.

PRESTRESSING STEEL SHALL BE UNCOATED HIGH STRENGTH, LOW RELAXATION 7-WIRE STRAND, GRADE 270.

THE NOMINAL DIAMETER SHALL BE 1/2" AND THE NOMINAL CROSS-SECTIONAL AREA SHALL BE 0.153 SQ. IN.

NON-PRESTRESSING STEEL SHALL CONFORM TO AASHTO DESIGNATION M-31 OR M 322, GRADE 60.

A MINIMUM 2 1/2"  $\phi$  LIFTING PIN SHALL BE USED TO ENGAGE THE LIFTING LOOPS DURING HANDLING.

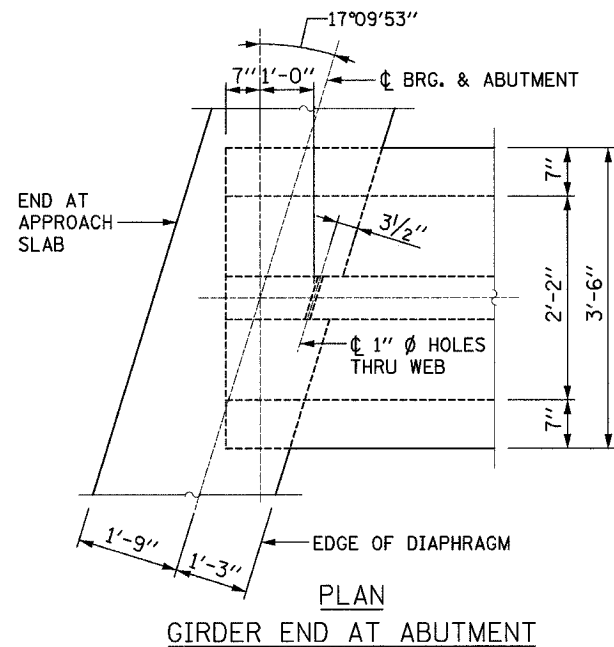
REINFORCEMENT BARS DESIGNATED (E) SHALL BE EPOXY COATED.

CUT G6 BARS WHEN NECESSARY TO MAINTAIN 1/2" CLEARANCE.

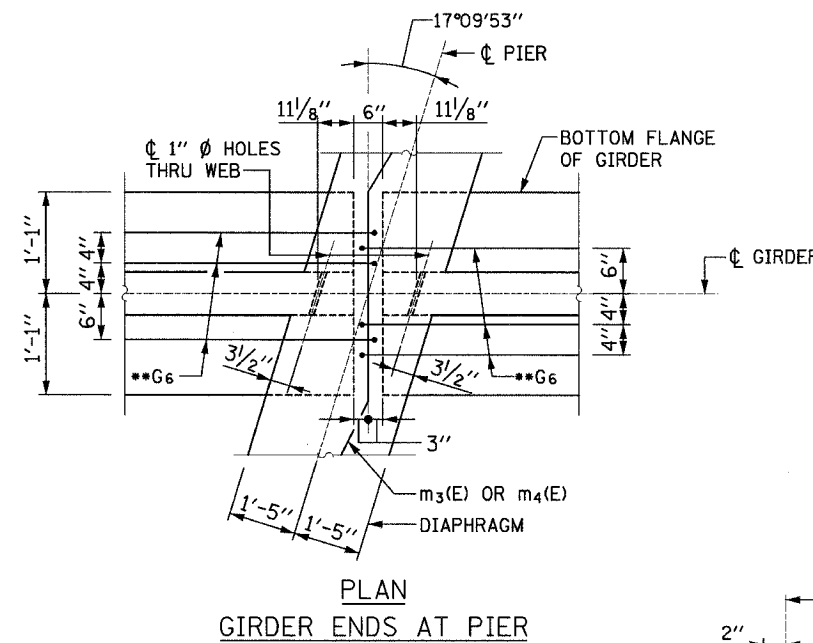
THE BOTTOM PLATES AND STUDS SHALL BE GALVANIZED ACCORDING TO AASHTO M111 AND ASTM A385.

THREADED RODS SHALL BE ASTM F 1554 GRADE 55.

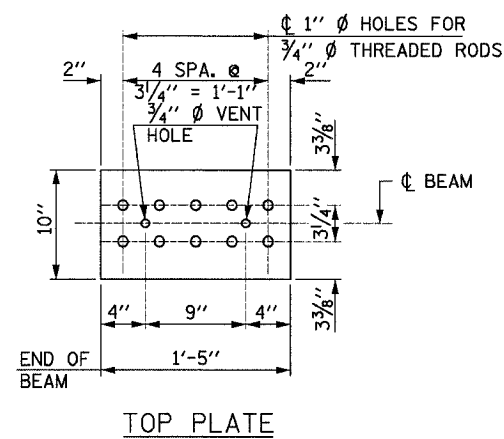
THE CUT STRANDS AT EACH BEAM END SHALL BE GIVEN TWO COATS OF ZINC DUST SPRAY OR PAINT MEETING THE REQUIREMENTS OF ASTM A 780. THE ZINC DUST SPRAY OR PAINT SHALL BE APPLIED BEFORE CORROSION APPEARS AND ALLOWED TO DRY ACCORDING TO THE MANUFACTURER'S SPECIFICATIONS PRIOR TO ANOTHER COAT OF ZINC. A CONCRETE SEALER MEETING THE REQUIREMENTS OF SECTION 587 OF THE STANDARD SPECIFICATIONS SHALL BE APPLIED TO ALL PORTIONS OF THE BULB-T BEAM, EXCEPT THE TOP SURFACE OF THE TOP FLANGE AND THE BOTTOM SURFACE OF THE BOTTOM FLANGE, STARTING AT EACH BEAM END AND EXTENDING OUT A DISTANCE OF 63 INCHES. THE SEALER SHALL BE APPLIED AFTER VISIBLE CRACK GROWTH HAS SUBSIDED. THIS WORK SHALL BE PERFORMED BY THE PRODUCER AND INCLUDED WITH THE COST OF THE BEAM.



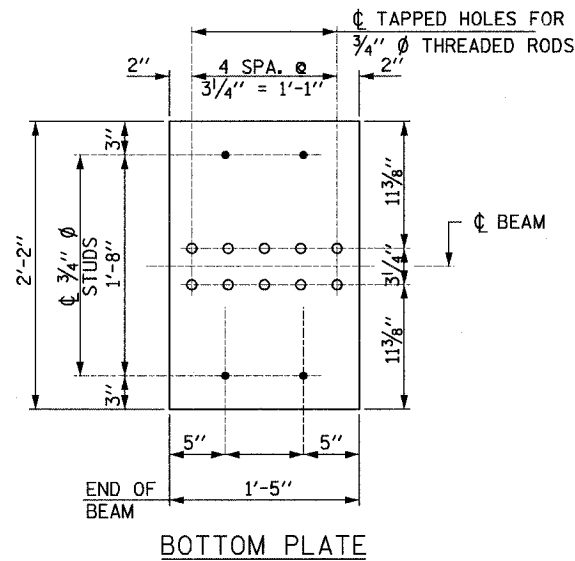
PLAN  
GIRDER END AT ABUTMENT



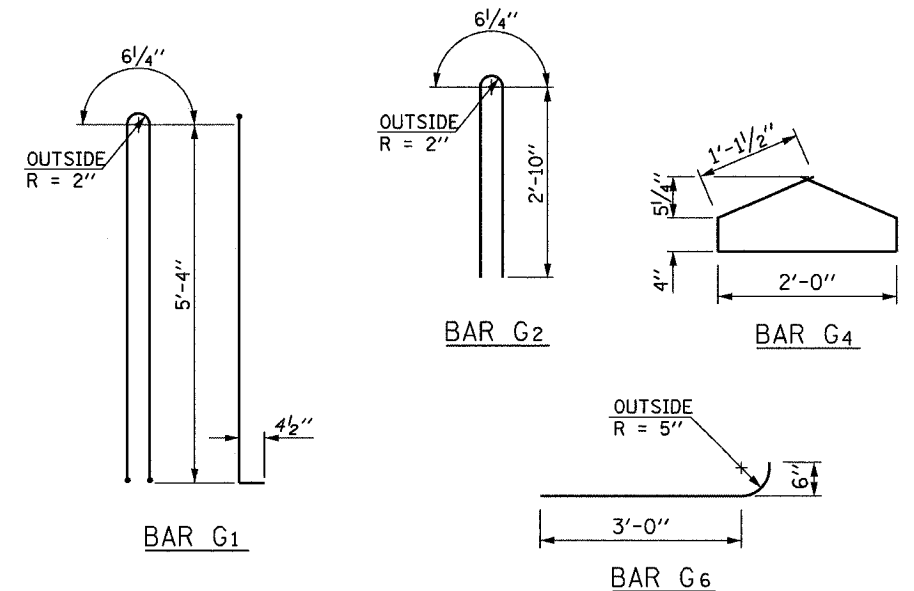
PLAN  
GIRDER ENDS AT PIER



TOP PLATE



BOTTOM PLATE



|          |     |
|----------|-----|
| DESIGNED | AH  |
| CHECKED  | JIG |
| DRAWN    | DCP |
| CHECKED  | JIG |



63" PPC BULB T-BEAM DETAILS  
N.W. TOLLWAY  
OVER IL 173 (F.A.P. ROUTE 303)  
SECTION 129K  
WINNEBAGO COUNTY  
STATION 443+73.62  
S.N. 101-9963 (SB) & 101-9964 (NB)  
TOLLWAY S.N. 703 (NB) & 704 (SB)