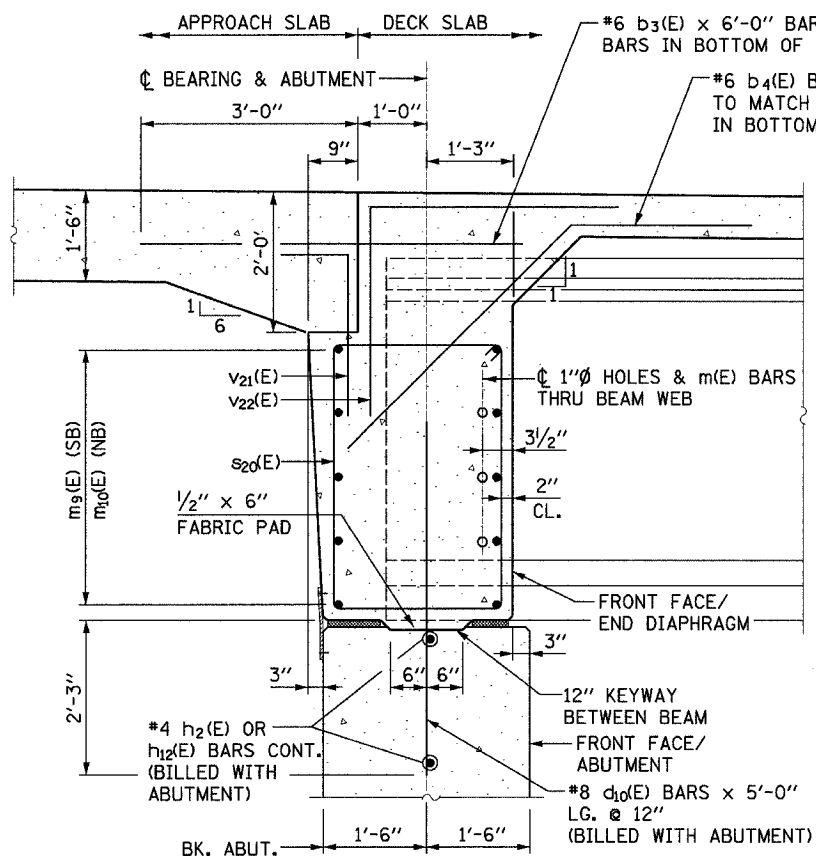
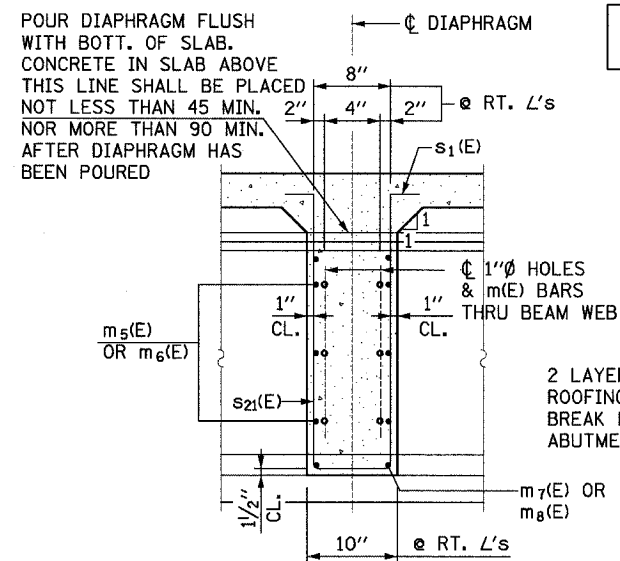


STATE OF ILLINOIS
DEPARTMENT OF TRANSPORTATION

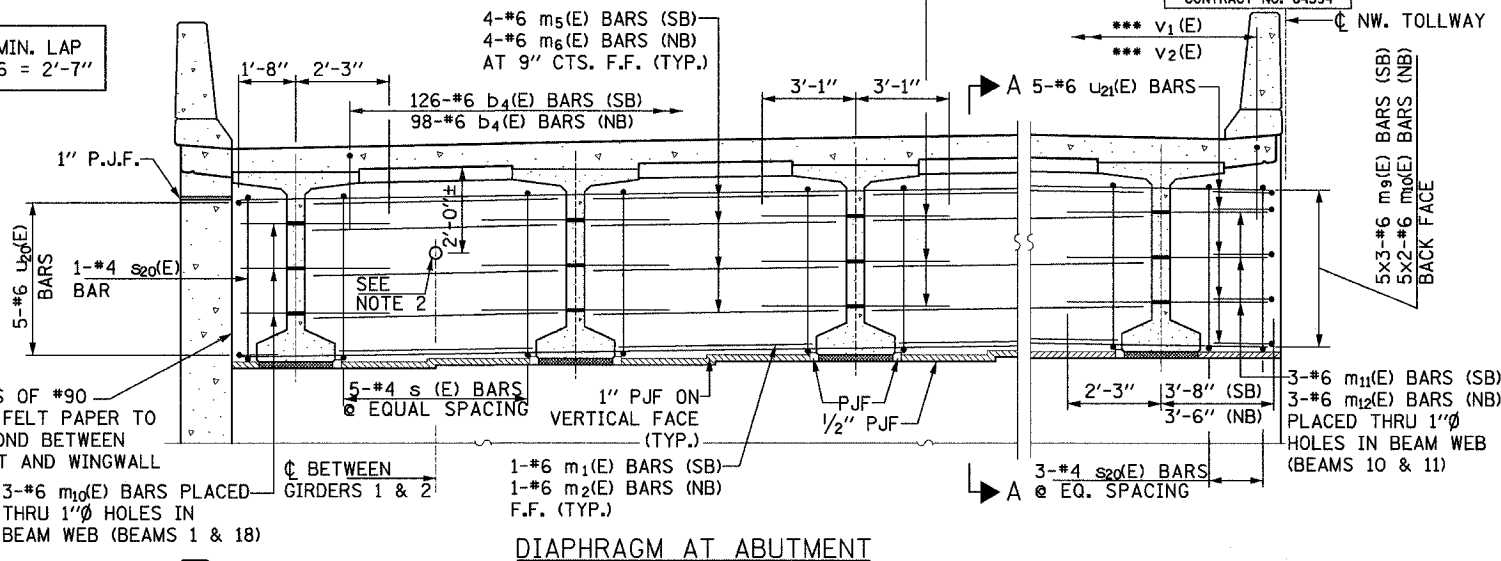
ROUTE NO.	SECTION	COUNTY	DATE	SHEET	SHEET NO. S25 OF SHEETS S47
303	129K	WINNEBAGO	585	204	
FED. ROAD DIST. NO.		ILLINOIS		CONTRACT NO. 64594	



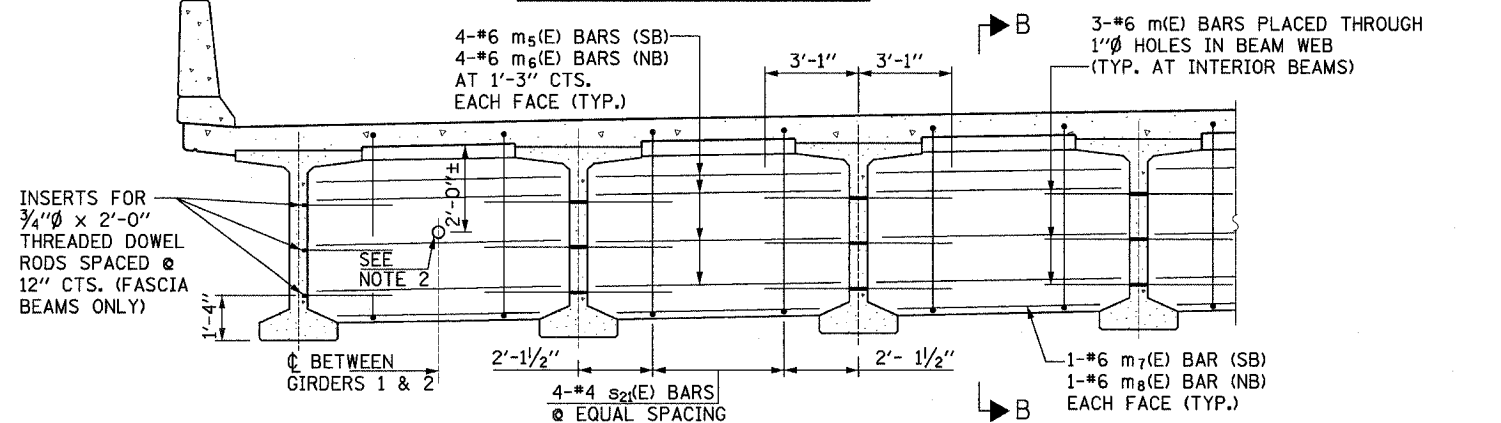
SECTION A-A AT ABUTMENT
(DIMENSIONS ALONG RT. L's TO ABUT., EXCEPT AS NOTED)



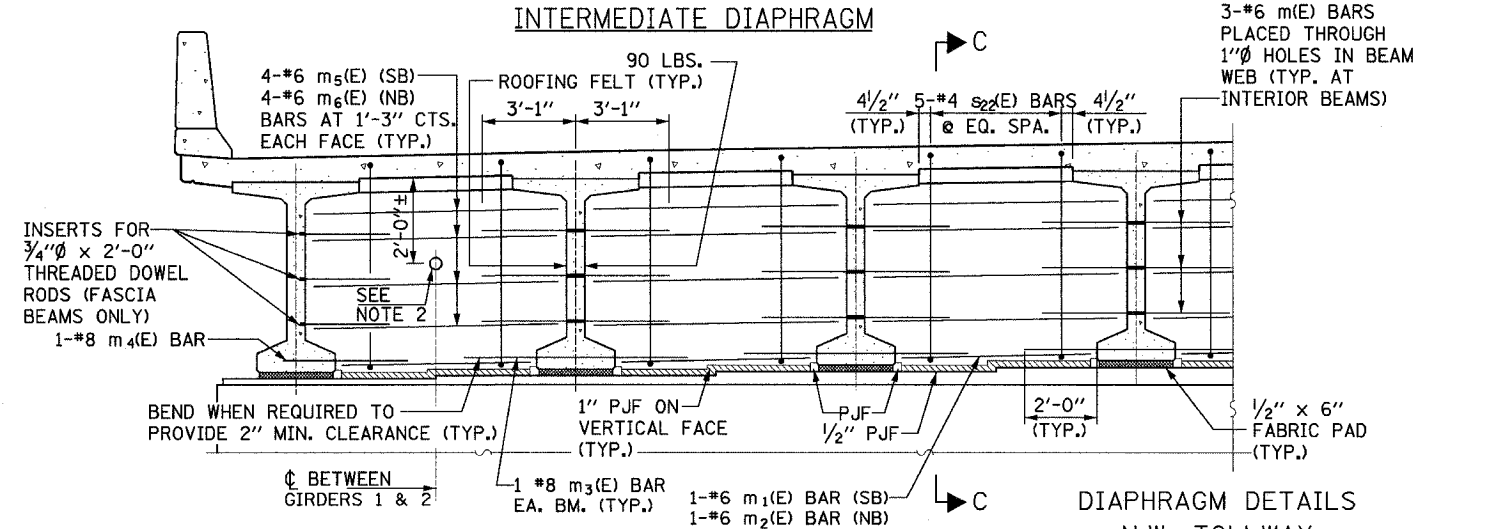
SECTION B-B
AT INTERMEDIATE DIAPHRAGM
(DIMENSIONS ALONG CL OF BEAM,
EXCEPT AS NOTED)



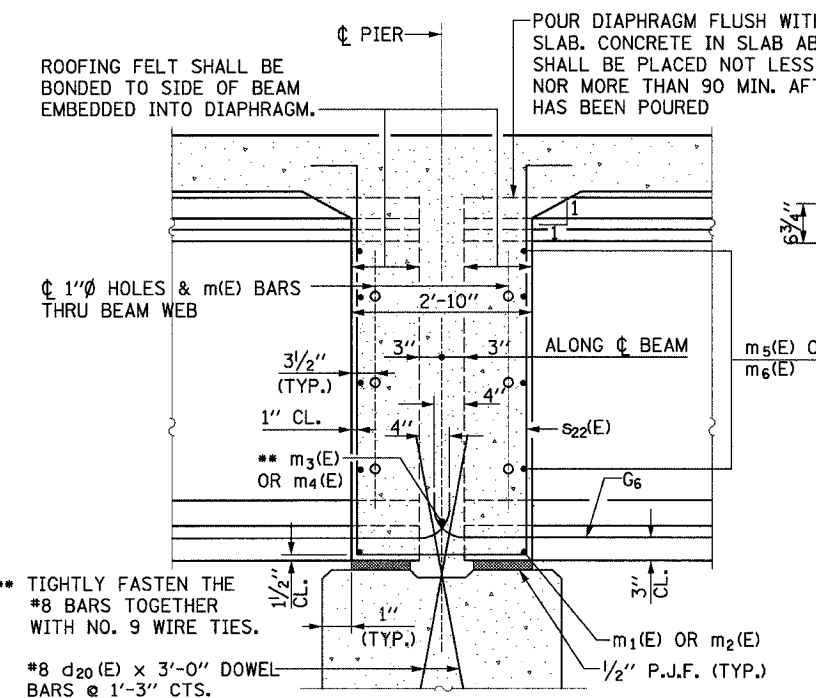
DIAPHRAGM AT ABUTMENT



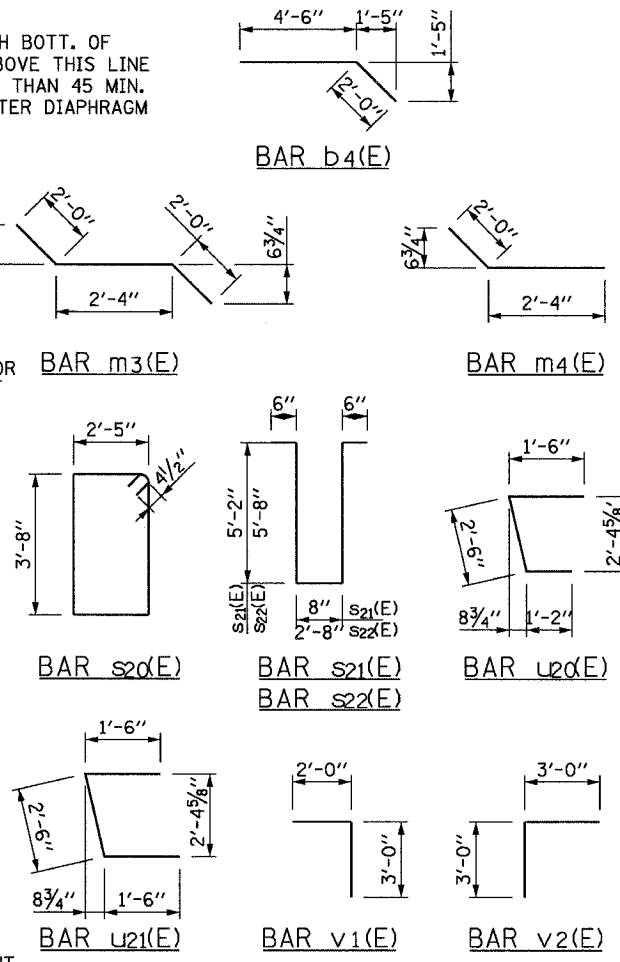
INTERMEDIATE DIAPHRAGM



DIAPHRAGM DETAILS



SECTION C-C AT PIER
(DIMENSIONS ALONG RT. L's TO PIER, EXCEPT AS NOTED)



- *** 152-#5 v20(E) BARS (SB)
- 128-#5 v20(E) BARS (NB)
- @ 12" CTS. LAP WITH APPROACH SLAB BARS
- DIAPHRAGM AT PIER
- *** 148-#5 v21(E) BARS (SB)
- 124-#5 v21(E) BARS (NB)
- @ 12" CTS. LAP WITH DECK SLAB BARS



N.W. TOLLWAY
OVER IL 173 (F.A.P. ROUTE 303)
SECTION 129K
WINNEBAGO COUNTY
STATION 443+73.62
S.N. 101-9963 (SB) & 101-9964 (NB)
TOLLWAY S.N. 703 (NB) & 704 (SB)

DESIGNED	AH
CHECKED	JIG
DRAWN	DCP
CHECKED	JIG

- NOTES:
1. ALL HOLES OR INSERTS IN PIER, ABUTMENT, OR DIAPHRAGM SHALL BE PLACED TO MISS THE PRESTRESSING STRANDS.
 2. 5" SCHEDULE 40 PVC PIPE USED AS A SLEEVE FOR FIBER OPTIC CONDUIT. CAST INTO DIAPHRAGM. COST INCLUDED WITH HPC SUPERSTRUCTURE. SPACE TO MISS REINFORCEMENT.