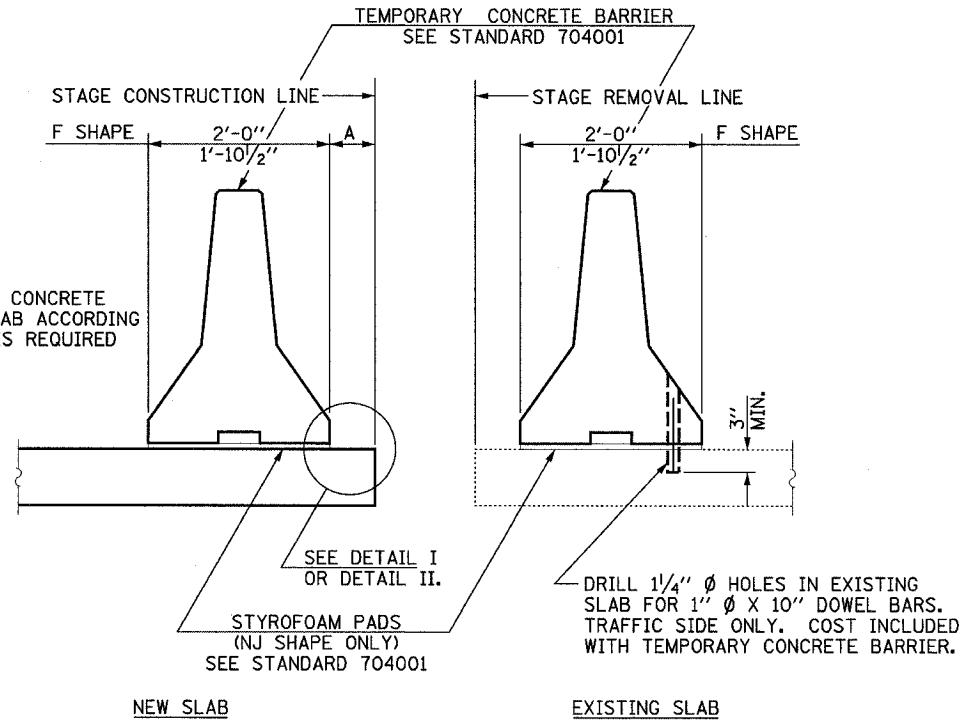


STATE OF ILLINOIS  
DEPARTMENT OF TRANSPORTATION

ROUTE NO.	SECTION	COUNTY	LEI	SHEET NO.	SHEET NO. S41 OF SHEETS S47
303	129k	WINNEBAGO	585	220	
FED. ROAD DIST. NO.		ILLINOIS	FED. AID PROJECT-		CONTRACT NO. 64594

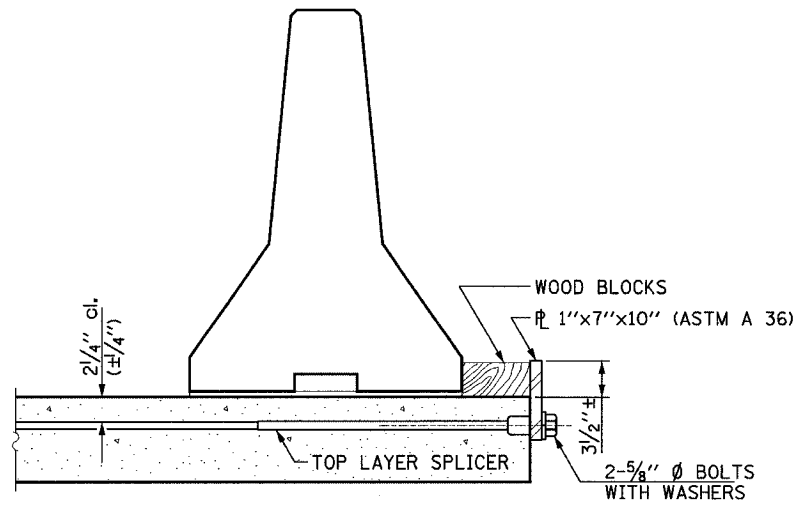


WHEN "A" IS 3'-6" OR LESS, THE TEMPORARY CONCRETE BARRIER SHALL BE ANCHORED TO THE NEW SLAB ACCORDING TO DETAIL I OR DETAIL II. NO ANCHORAGE IS REQUIRED WHEN "A" IS GREATER THAN 3'-6".

SECTIONS THRU SLAB

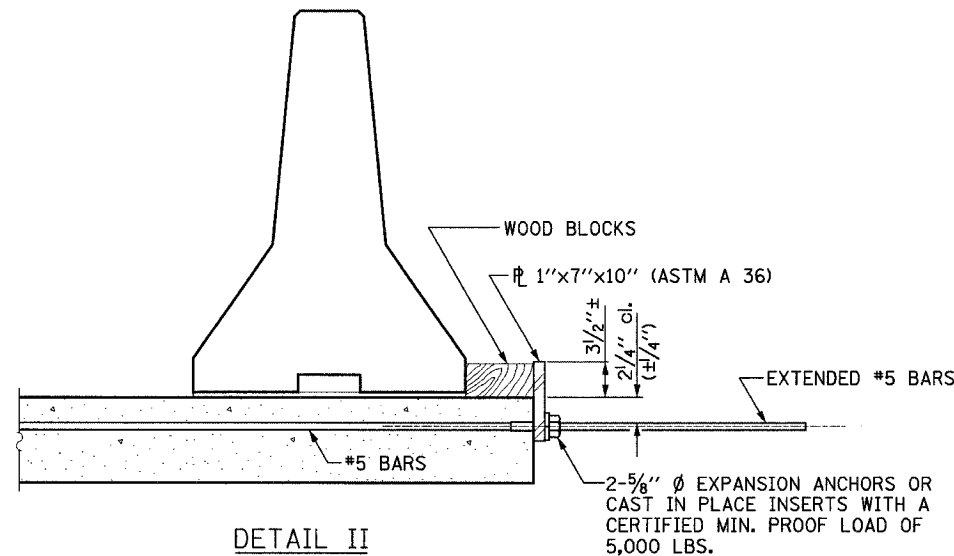
NOTES

- DETAIL I - WITH BAR SPLICER OR COUPLERS:  
CONNECT ONE (1) 1"x7"x10" STEEL PLATE TO THE TOP LAYER OF COUPLERS WITH 2-5/8" Ø BOLTS SCREWED TO COUPLER AT APPROXIMATE C OF EACH BARRIER PANEL.
- DETAIL II - WITH EXTENDED REINFORCEMENT BARS:  
CONNECT ONE (1) 1"x7"x10" STEEL PLATE TO THE CONCRETE SLAB WITH 2-5/8" Ø EXPANSION ANCHORS OR CAST IN PLACE INSERTS SPACED BETWEEN THE TOP LAYER OF REINFORCEMENT AT APPROXIMATE C OF EACH BARRIER PANEL.
- COST OF ANCHORAGE IS INCLUDED WITH TEMPORARY CONCRETE BARRIER.



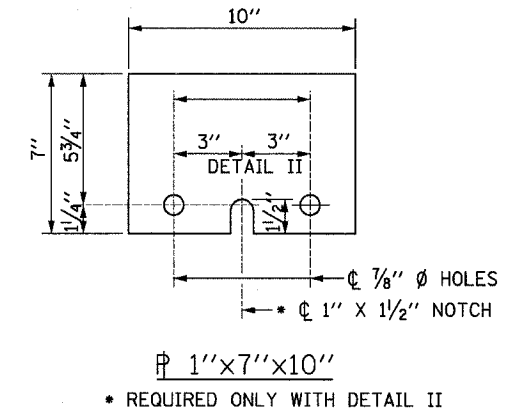
DETAIL I

THE 1"x7"x10" PLATE SHALL NOT BE REMOVED UNTIL STAGE II CONSTRUCTION FORMS AND REINFORCEMENT BARS ARE IN PLACE.



DETAIL II

THE 1"x7"x10" PLATE SHALL NOT BE REMOVED UNTIL STAGE II CONSTRUCTION FORMS AND ALL REINFORCEMENT BARS ARE IN PLACE AND THE CONCRETE IS READY TO BE PLACED.



DESIGNED	AH
CHECKED	JIG
DRAWN	DCP
CHECKED	JIG



TEMPORARY CONCRETE BARRIER  
FOR STAGE CONSTRUCTION  
N.W. TOLLWAY  
OVER IL 173 (F.A.P. ROUTE 303)  
SECTION 129K  
WINNEBAGO COUNTY  
STATION 443+73.62  
S.N. 101-9963 (SB) & 101-9964 (NB)  
TOLLWAY S.N. 703 (NB) & 704 (SB)