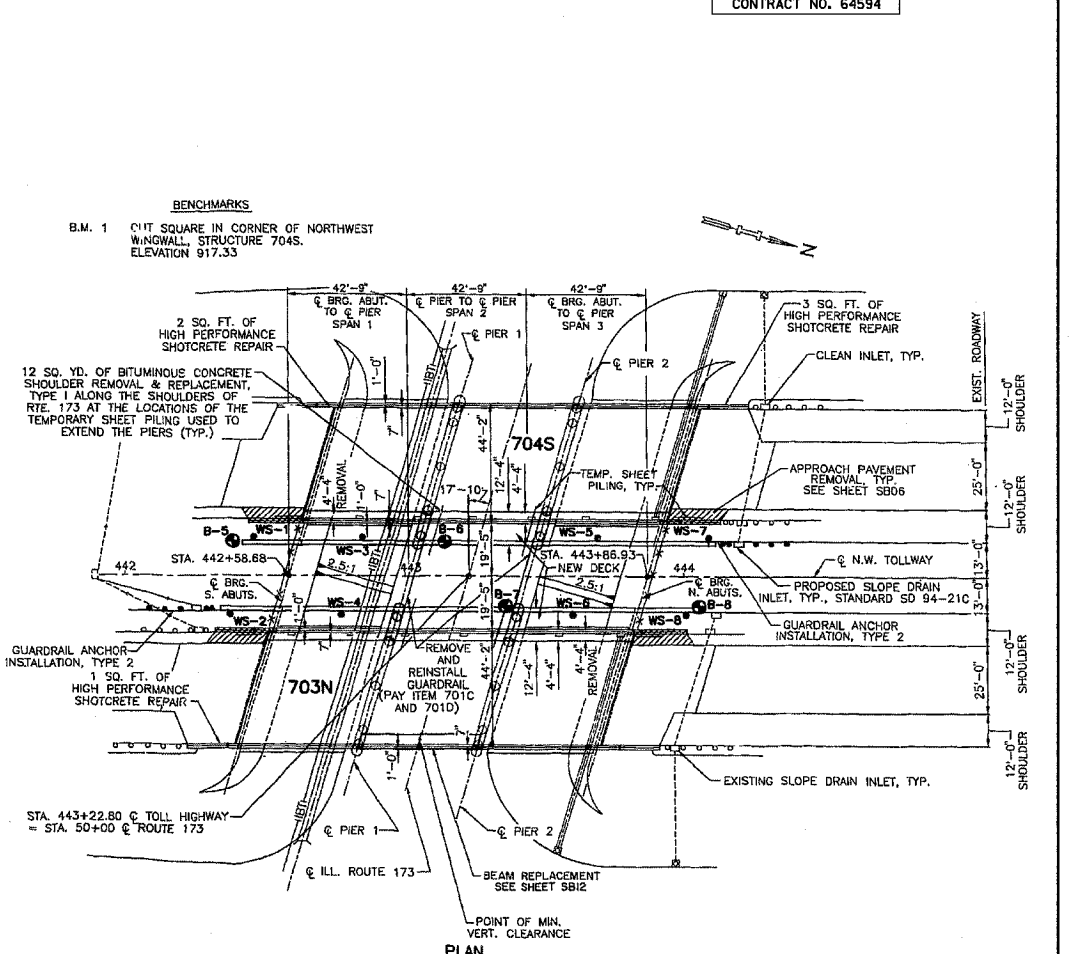
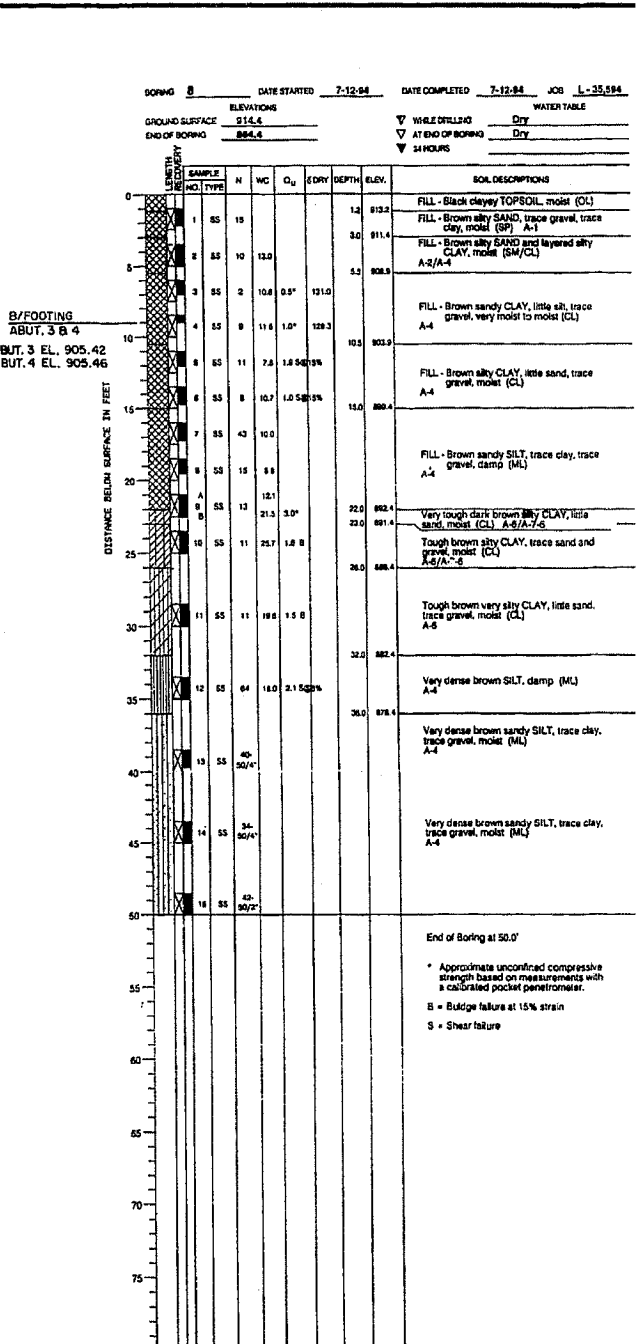
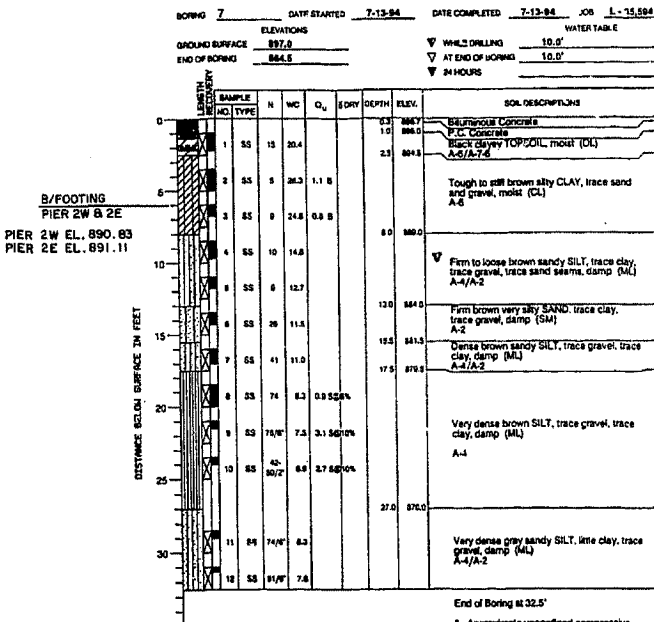
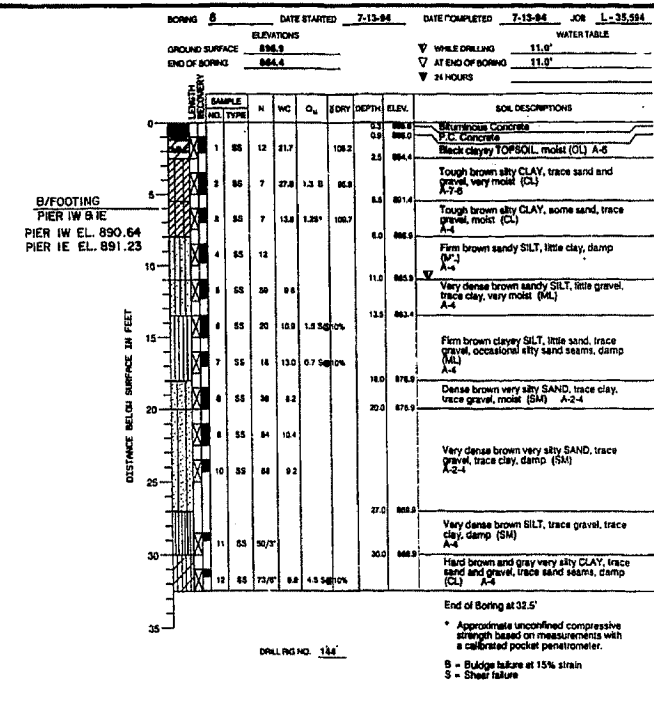
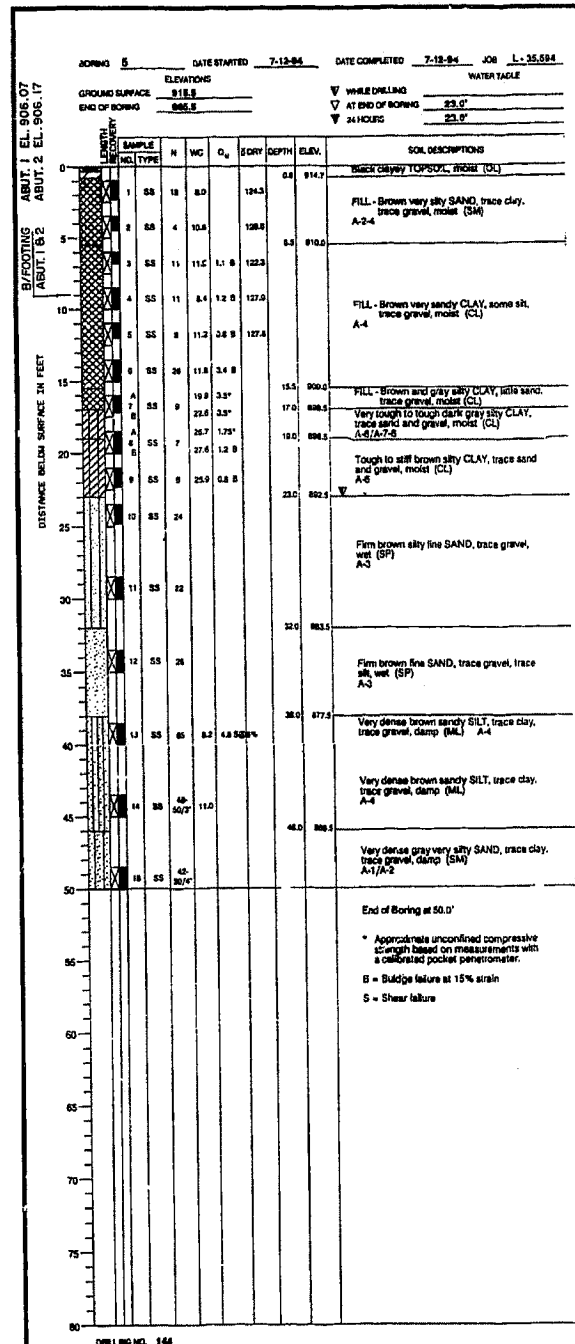


STATE OF ILLINOIS
DEPARTMENT OF TRANSPORTATION

ROUTE NO.	SECTION	COUNTY	SHEET NO.	SHEET NO. S46
F. A. P.	303	129K	WINNEBAGO	585
ILLINOIS	FED. AID PROJECT-		225	OF SHEETS S47
CONTRACT NO. 64594				



DESIGNED MS	CHECKED JIG	DRAWN DCP	CHECKED JIG	DATE FEB '96	SCALE	ENGINEERING CONSULTANT CIVILTECH ENGINEERING, INC. 1250 WILMINGTON HEIGHTS ROAD • SUITE 250 • NASCAR, ILLINOIS 60143 (708) 773-3900 • FAX (708) 773-3975	THE ILLINOIS TOLL HIGHWAY AUTHORITY ONE AUTHORITY DRIVE DOWNERS GROVE, ILLINOIS 60516	REVISIONS NO. DATE DESCRIPTION	CONTRACT MIP-93-592 N.W. TOLLWAY OVER ILL. RTE. 173 BORING LOGS - I	SB24 OF SB25	DRAWING NO. 144 OF 211
-------------	-------------	-----------	-------------	--------------	-------	---	---	-----------------------------------	---	--------------	---------------------------

DESIGNED	MS
CHECKED	JIG
DRAWN	DCP
CHECKED	JIG



BORING LOG IV
N.W. TOLLWAY
OVER IL 173 (F.A.P. ROUTE 303)
SECTION 129K
WINNEBAGO COUNTY
STATION 443+73.62
S.N. 101-9963 (SB) & 101-9964 (NB)
TOLLWAY S.N. 703 (NB) & 704 (SB)