

SOUTH TRANSITION APPROACH SLAB (NB)

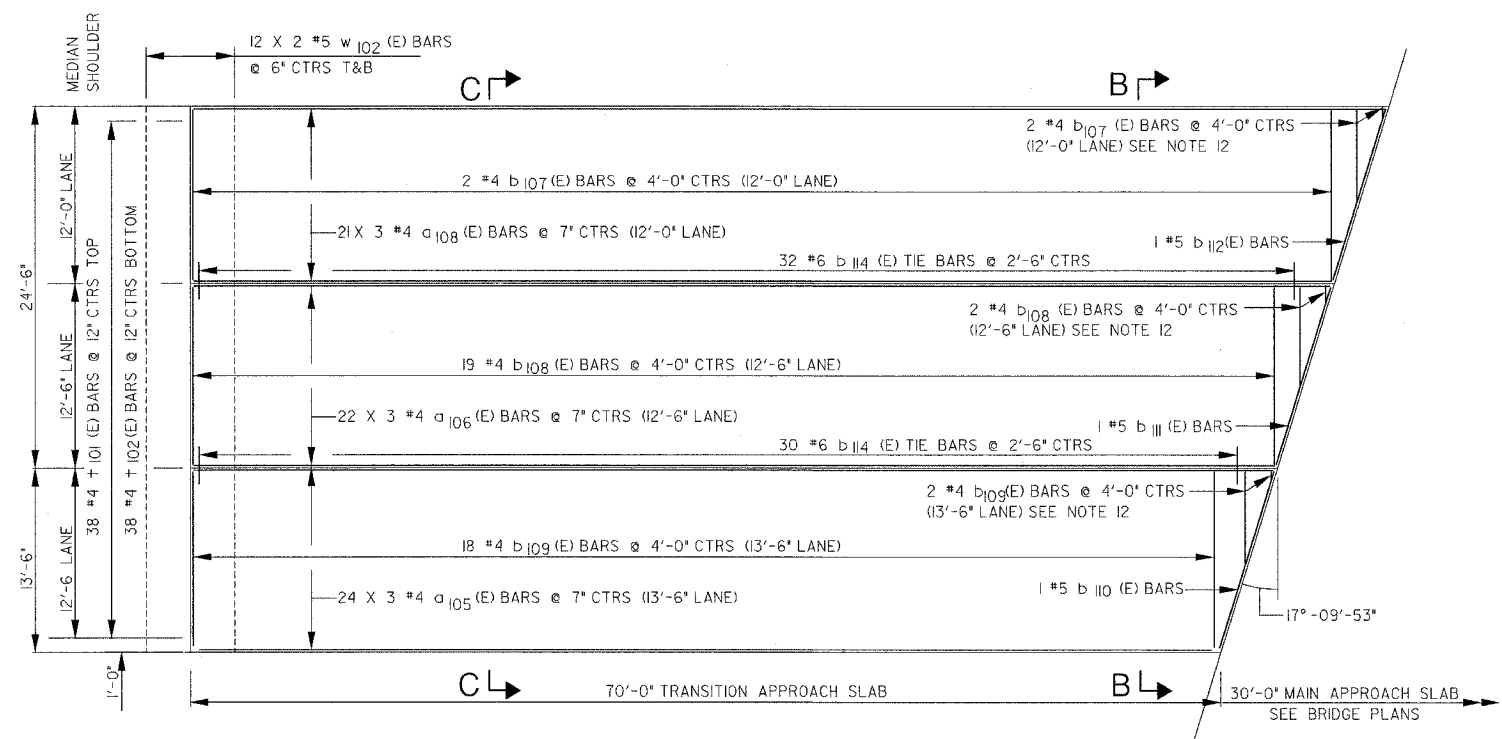
F.A.P. RTE.	SECTION	COUNTY	TOTAL SHEETS	SHEET NO.
303	129K	WINNEBAGO	585	228
STA.		TO STA.		
FED. ROAD DIST. NO.	ILLINOIS	FED. AID PROJECT		

REINFORCING BAR SCHEDULE (FOR SOUTHBOUND APPROACH SLAB)

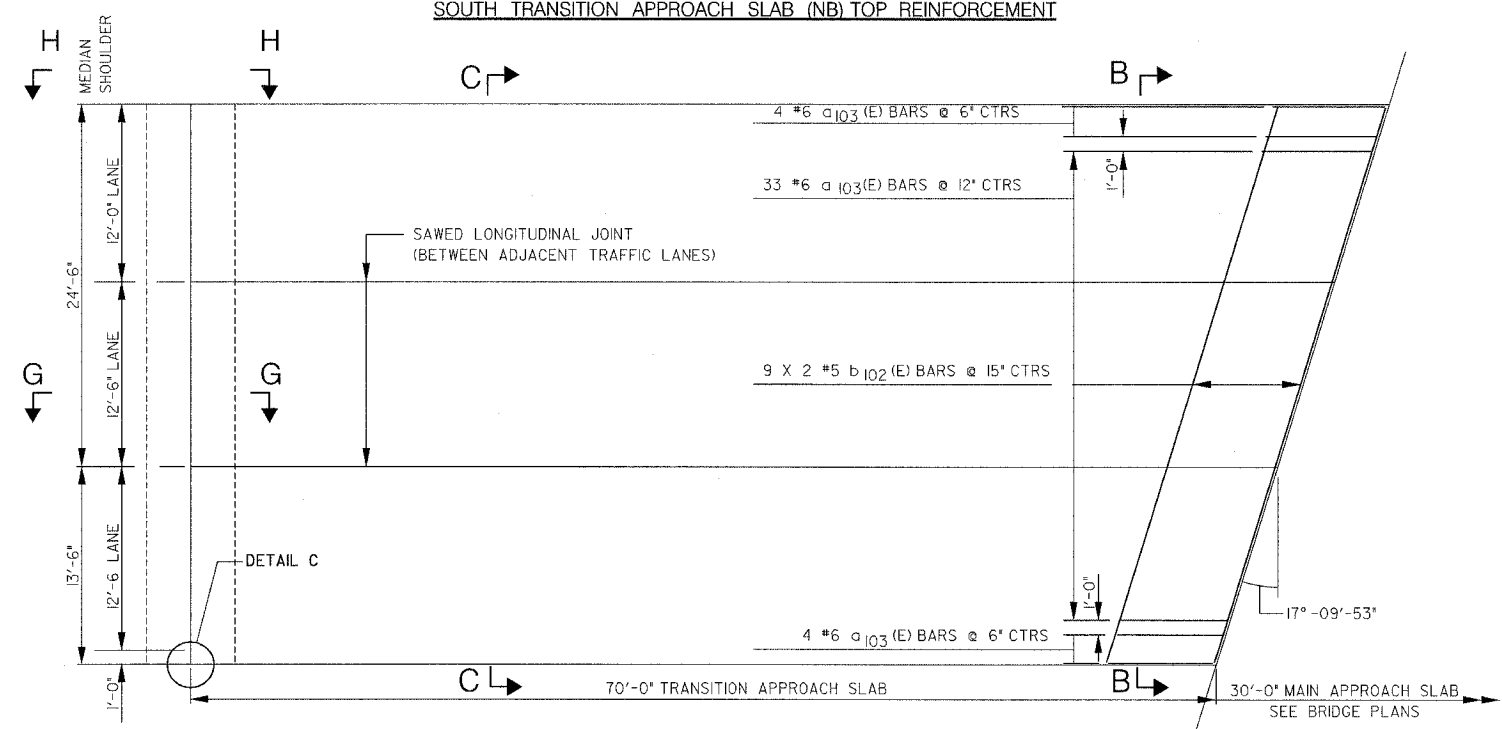
BAR	NO.	SIZE	LENGTH	SHAPE
a ₁₀₃ (E)	41	#6	10'-8"	┌
a ₁₀₅ (E)	72	#4	25'-6"	—
a ₁₀₆ (E)	66	#4	26'-9"	—
a ₁₀₈ (E)	63	#4	28'-0"	—
b ₁₀₂ (E)	18	#5	20'-7"	—
b ₁₀₇ (E)	21	#4	11'-8"	—
b ₁₀₈ (E)	20	#4	12'-2"	—
b ₁₀₉ (E)	19	#4	13'-2"	—
b ₁₁₀ (E)	1	#5	13'-9"	—
b ₁₁₁ (E)	1	#5	12'-8"	—
b ₁₁₂ (E)	1	#5	12'-2"	—
b ₁₁₄ (E)	62	#6	2'-6"	—
t ₁₀₁ (E)	38	#4	5'-8"	—
t ₁₀₂ (E)	38	#4	6'-8"	┐
w ₁₀₂ (E)	48	#5	19'-8"	—
Reinforcement Bars, Epoxy Coated		Pound	6,691	

BILL OF MATERIAL

PAY ITEM NUMBER	DESCRIPTION	UNIT	QUANTITY
42001400	Bridge Approach Pavement (Special)	Sq. Yds.	320



SOUTH TRANSITION APPROACH SLAB (NB) TOP REINFORCEMENT



SOUTH TRANSITION APPROACH SLAB (NB) BOTTOM REINFORCEMENT



REVISIONS	
NAME	DATE

ILLINOIS DEPARTMENT OF TRANSPORTATION
 SOUTH TRANSITION APPROACH SLAB (NB)
 N.W. TOLLWAY
 OVER IL 173 (F.A.P. ROUTE 303)
 SECTION 129K
 WINNEBAGO COUNTY
 S.N. 101-9963 (SB) & 101-9964 (NB)
 TOLLWAY S.N. 703 (NB) & 704 (SB)

SCALE: VERT. N/A
 HORIZ. N/A
 DATE: SEPTEMBER 14, 2005

DRAWN BY: BSL
 CHECKED BY: JTT